

# euroKing Series Combined Guide Unit and Cylinder Assemblies

VDMA24562  
ISO6431

Ø32mm - Ø100mm



## Features

- ◆ Complete guide unit and cylinder assembly
- ◆ Provides non-rotating function
- ◆ Optional shock absorbers
- ◆ High load bearing capacity

## Materials

Guide unit

Body: Anodised aluminium  
Guide rods: Hardened ground steel  
End plates: Anodised aluminium  
Bearings: Linear roller type

Cylinder: Refer to euroKing datasheets (from page 1.04)

Cylinder Ø	Shock absorber
32 - 40	KAD1410
50 - 63	KAD2016
80 - 100	KAD2525

Part number	Cylinder Ø mm	(S) Stroke length mm												Reed switch kit part number (optional)
		25	50	80	100	125	160	200	250	300	400	500	>500	
	32	●	●	●	●	●	●	●	●	●	-	-		Kit 2561
Refer to	40	●	●	●	●	●	●	●	●	●	-	-	Consult	Kit 2562
ordering	50	●	●	●	●	●	●	●	●	●	●	●	Technical	Kit 2563
information	63	●	●	●	●	●	●	●	●	●	●	●	Sales	Kit 2564
	80	●	●	●	●	●	●	●	●	●	●	●		Kit 2565
	100	●	●	●	●	●	●	●	●	●	●	●		Kit 2566

## Ordering Information:

**Cylinder type + Ø + Stroke + Guide suffix**  
**KCL1 032 0100 GLS**

Optional items should be ordered separately

For guide units without shock absorbers add suffix GL to part number.

For guide units with shock absorbers add suffix GLS to part number.

Shock Absorbers should be ordered separately. Refer to Additional Information at the end of this section.

## Description

Complete guide unit and cylinder assembly which provides non rotating function to pneumatic cylinders.

Guide units also increase cylinder load-bearing capacity.

## Technical Specifications

Guide unit temperature range: -30°C to +70°C

## Optional Extras

Shock absorbers: for high speed/load applications, two shock absorbers should be fitted

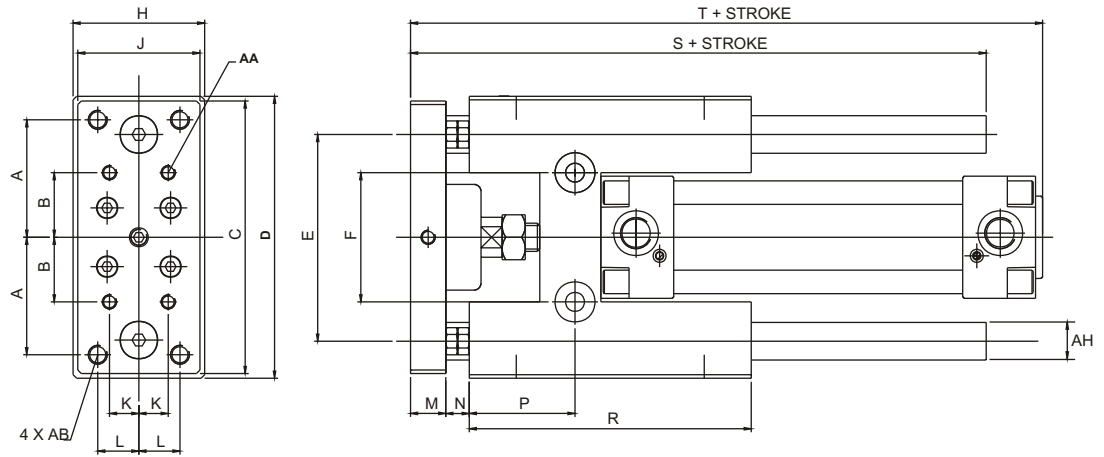
**Guide units are also available without cylinders, contact KV Technical Sales.**

## Guide Unit Recommended Loading (Kg)

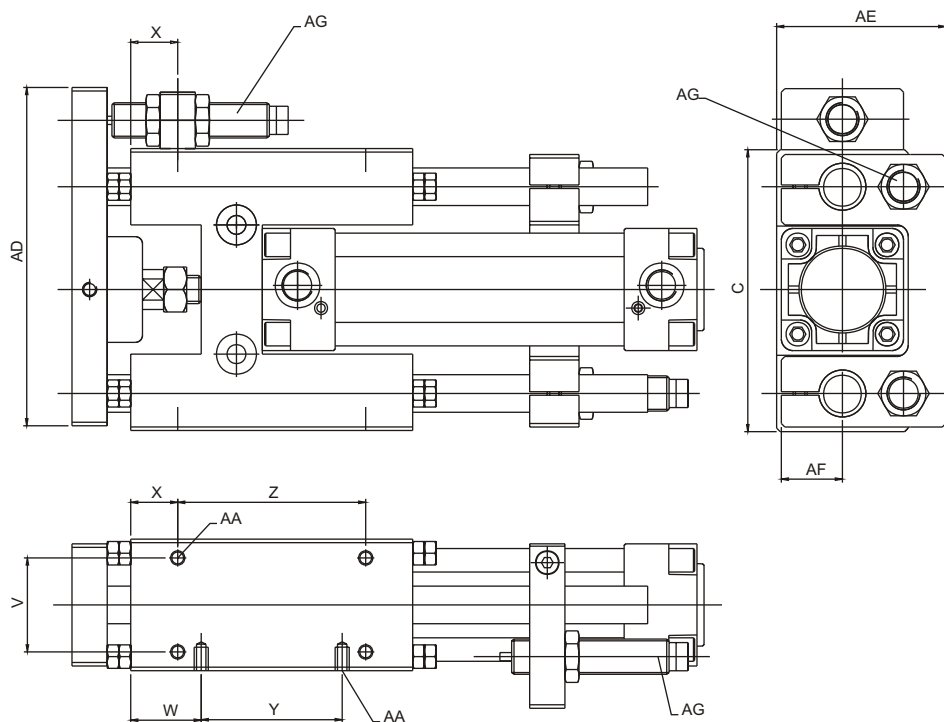
Cylinder Ø	Extended Length (mm)					
	0	200	400	600	800	1000
32 - 40	31.0	18.3	11.0	8.0	-	-
50 - 63	35.0	22.0	14.0	10.0	7.0	-
80 - 100	70.0	48.0	32.5	23.5	18.0	13.0



## KCL1...GL Series without Shock Absorber Mountings



## KCL1...GLS Series with Shock Absorber Mountings



## Dimensions for KCL1...GL and KCL1...GLS Series

units mm

Cylinder Ø	A	B	C	D	E	F	H	J	K	L	M
32 - 40	50	27.5	116	120	88	55	56	52	12.5	17.5	15
50 - 63	65	40	156	160	120	80	78	74	20	25	20
80 - 100	90	55	216	220	170	120	115	110	30	40	25
Cylinder Ø	N	P	R	S	T	V	W	X	Y	Z	AA
32	10	45	120	223	179	40	30	20	60	80	M6X1.0
40	10	45	120	223	190	40	30	20	60	80	M6X1.0
50	10	65	160	286	219	50	40	30	80	100	M8X1.25
63	10	65	160	286	234	50	40	30	80	100	M8X1.25
80	10	90	220	351	280	80	60	40	100	140	M10X1.5
100	10	90	220	351	290	80	60	40	100	140	M10X1.5
Cylinder Ø	AB	AC	AD	AE	AF	AG	AH				
32 - 40	M8X1.25	M10X1.5	142	72	26	M14X1.5	16				
50 - 63	M10X1.5	M12X1.75	190	99	37	M20X1.5	20				
80 - 100	M12X1.75	M14X2.0	258	142.5	55	M25X1.5	25				

