

KVFE

Solenoid Actuated Spool Valves

G1/8, G1/4

3/2, 5/2, 5/3



Features

- ◆ General purpose spool valves
- ◆ Media - compressed air and neutral gases
- ◆ Mounting - body ported or manifold

Materials

Body:	Aluminium
Spool:	Aluminium
Seals:	Nitrile
Endcaps:	Glass filled polyester
Springs:	Stainless steel
Seal spacers:	PPS

Technical Specifications

Function:	3/2, 5/2, 5/3
Port connections:	G1/8, G1/4
Main pressure range:	-1 bar min +10 bar max
Lubrication:	Dry or lubricated
Filtration:	40µm
Temperature range:	-20°C min +50°C max
Voltage options:	DC 6, 12, 24, 48, 110V AC 12, 24, 48, 110, 230V 50/60Hz
Power consumption:	1.9W DC, 3.8VA AC
Additional information:	See tables

Part Number	Port connection	Function	Actuation	
			'I'	'O'
KVFE11143	G1/8	3/2	Solenoid	Spring
KVFE11145	G1/8	5/2	Solenoid	Spring
KVFE11163	G1/4	3/2	Solenoid	Spring
KVFE11165	G1/4	5/2	Solenoid	Spring
KVFE11345	G1/8	5/2	Solenoid	Solenoid
KVFE113453	G1/8	5/3	Solenoid	Solenoid
KVFE11365	G1/4	5/2	Solenoid	Solenoid
KVFE113653	G1/4	5/3	Solenoid	Solenoid
KVFE11443	G1/8	3/2	Solenoid	Air differential
KVFE11445	G1/8	5/2	Solenoid	Air differential
KVFE11463	G1/4	3/2	Solenoid	Air differential
KVFE11465	G1/4	5/2	Solenoid	Air differential

These valves are also available with explosion protected coils.

Ordering Information:

By Valve part number + Voltage

All valves are supplied with coil(s) and standard electrical connection socket(s)

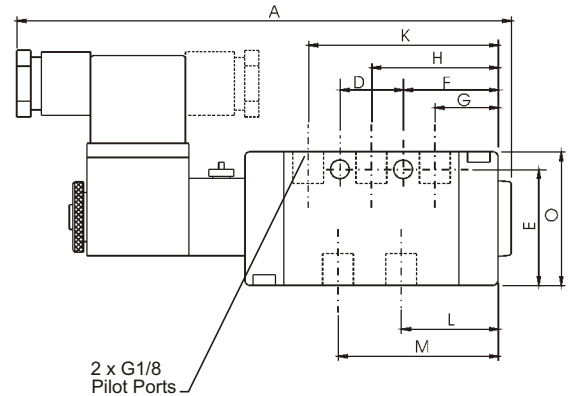
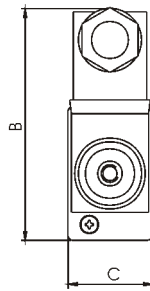
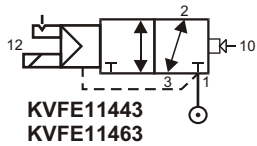
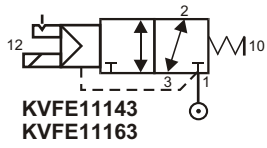
Part Number	Pilot pressure bar		Response time milliseconds max @ 5.5 bar		Effective Ø mm	Flow nl/s (dm ³ /s) @ p 5.5 bar	Cv	Kv
	min	max	'I'	'O'				
KVFE11143	3	10	25	30	5.0	20	0.8	12
KVFE11145	3	10	25	30	5.0	20	0.8	12
KVFE11163	3	10	30	35	6.1	30	1.2	18
KVFE11165	3	10	30	35	6.1	30	1.2	18
KVFE11345	2	10	25	25	5.0	20	0.8	12
KVFE113453	3	10	25	25	5.0	20	0.8	12
KVFE11365	2	10	30	30	6.1	30	1.2	18
KVFE113653	3	10	30	30	6.1	30	1.2	18
KVFE11443	3	10	25	30	5.0	20	0.8	12
KVFE11445	3	10	25	30	5.0	20	0.8	12
KVFE11463	3	10	30	35	6.1	30	1.2	18
KVFE11465	3	10	30	35	6.1	30	1.2	18



Dimensions

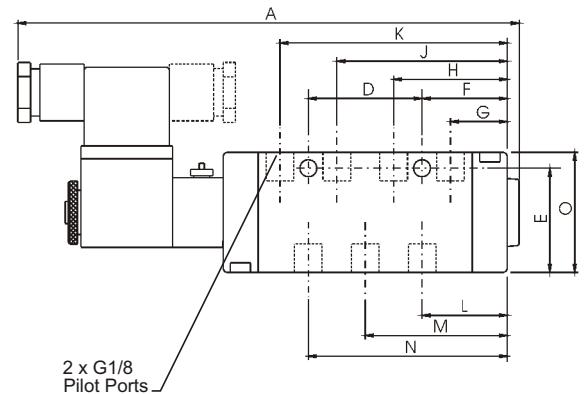
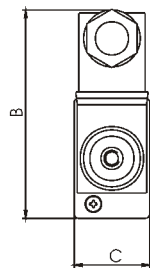
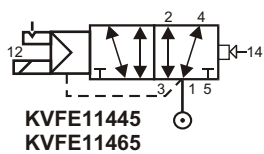
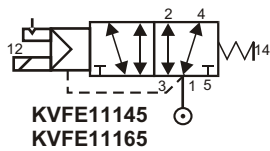
units mm

3/2 Single Solenoid Valves G1/8, G1/4



Part Number	Port	A	B	C	D	E	F	G	H	K	L	M	O
KVFE11143	G1/8	141.0	66.5	24	18.0	33	30.8	18.0	36.0	54.0	27.0	45.0	38
KVFE11443	G1/8	137.0	66.5	24	18.0	33	27.0	14.3	32.3	50.3	23.3	41.3	38
KVFE11163	G1/4	148.0	69.5	24	21.5	36	32.5	19.5	39.5	59.5	29.5	49.5	44
KVFE11463	G1/4	144.0	69.5	24	21.5	36	29.0	16.0	36.0	56.0	26.0	46.0	44

5/2 Single Solenoid Valves G1/8, G1/4



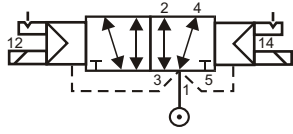
Part Number	Port	A	B	C	D	E	F	G	H	J	K	L	M	N	O
KVFE11145	G1/8	159.0	66.5	24	36.0	33	30.7	18.0	36.0	54.0	72.0	27.0	45.0	63.0	38
KVFE11445	G1/8	155.0	66.5	24	36.0	33	27.0	14.3	32.3	50.3	68.3	23.3	41.3	59.3	38
KVFE11165	G1/4	168.0	69.5	24	41.5	36	32.5	19.5	39.5	59.5	79.5	29.5	49.5	69.5	44
KVFE11465	G1/4	164.0	69.5	24	41.5	36	29.0	16.0	36.0	56.0	76.0	26.0	46.0	66.0	44



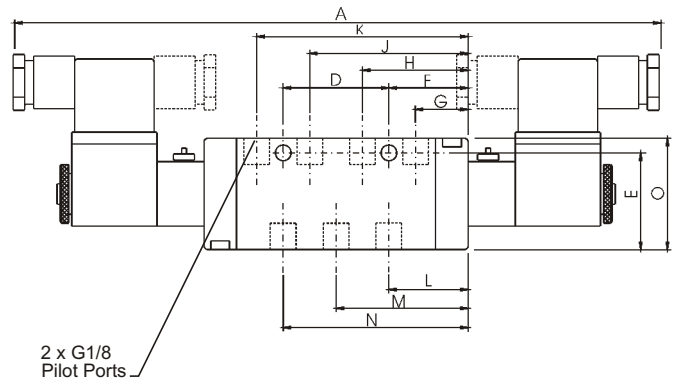
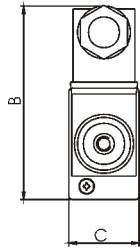
Dimensions

units mm

5/2 Double Solenoid Valves G1/8, G1/4

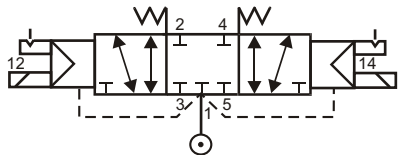


KVFE11345
KVFE11365

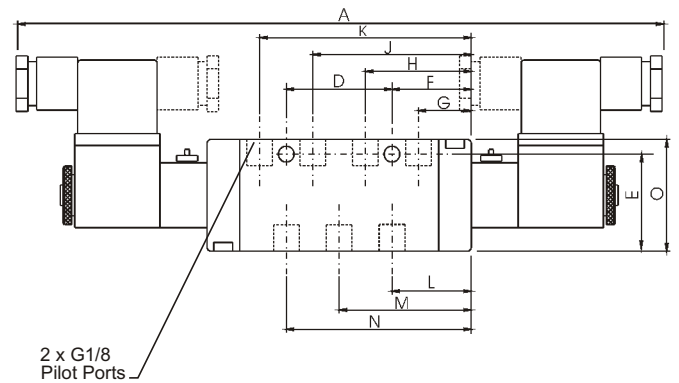
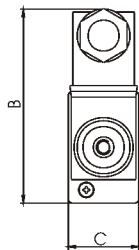


Part Number	Port	A	B	C	D	E	F	G	H	J	K	L	M	N	O
KVFE11345	G1/8	220	66.5	24	36.0	33	27	18.0	36.0	54.0	72.0	27.0	45.0	63.0	38
KVFE11365	G1/4	229	69.5	24	41.5	36	29	19.5	39.5	59.5	79.5	29.5	49.5	69.5	44

5/3 Double Solenoid Valves G1/8, G1/4



KVFE113453
KVFE113653



Part Number	Port	A	B	C	D	E	F	G	H	J	K	L	M	N	O
KVFE113453	G1/8	220	66.5	24	36.0	33	27	18.0	36.0	54.0	72.0	27.0	45.0	63.0	38
KVFE113653	G1/4	229	69.5	24	41.5	36	29	19.5	39.5	59.5	79.5	29.5	49.5	69.5	44