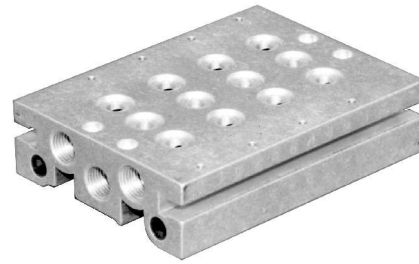


# Valve Manifold

For KVF, KVFE, KVH and KVHE Valves

5/2

G1/8, G1/4



## Features

- ◆ High durability extrusion
- ◆ Mounting via through-holes or optional DIN rail kit
- ◆ Accommodates up to 12 valves

## Description

Manifold extrusions are supplied complete with valve mounting screws and seals.

Custom-built manifolds assembled with valves can be factory built to specific customer requirements.

Through-holes in the manifold body permit mounting upon the rear surface.

For DIN rail mounting, the DIN rail kit should be ordered (optional).

## Material

Aluminium extrusion

## Technical Specification

2, 4, 6, 8, 10 or 12 valve positions

Suitable for 5/2 valves

Manifold port connections

G1/8 valve manifold

G1/4 valve manifold

Input/exhaust

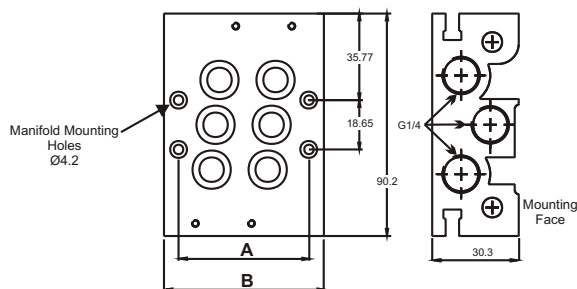
G1/4

G3/8

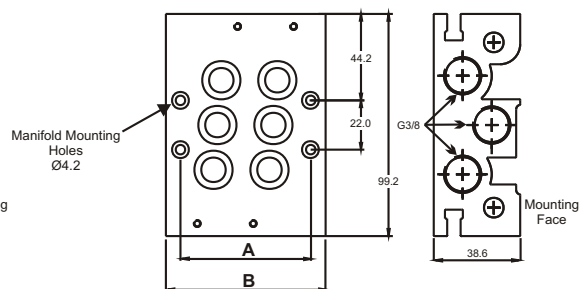
## Dimensions

units mm

### Manifold for G1/8 valves



### Manifold for G1/4 valves



## Ordering Information:

**By part number - Manifold only**

For factory assembled manifold valve assemblies contact KV Technical Sales.

Part Number	Number of positions	For valve size	Dimensions	
			A	B
320A1201/2	2	G1/8	58	71
320A1201/4	4	G1/8	108	121
320A1201/6	6	G1/8	158	171
320A1201/8	8	G1/8	208	221
320A1201/10	10	G1/8	258	271
320A1201/12	12	G1/8	308	321
320A1202/2	2	G1/4	58	71
320A1202/4	4	G1/4	108	121
320A1202/6	6	G1/4	158	171
320A1202/8	8	G1/4	208	221
320A1202/10	10	G1/4	258	271
320A1202/12	12	G1/4	308	321

## Optional extras

Part Number	Manifold Type	Description
KIT2626	G1/8	DIN rail clip kit ( 2 clips, 2 screws)
KIT2594	G1/8	Additional valve mounting screws and seals
KIT2596	G1/8	For un-populated valve position
KIT2627	G1/4	DIN rail clip kit ( 2 clips, 2 screws)
KIT2595	G1/4	Additional valve mounting screws and seals
KIT2597	G1/4	For un-populated valve position