

KVPHVP

High Vac Series

Venturi Vacuum Pumps



Features

- ◆ Will achieve vacuum levels up to -999 mbar (g) gauge (14.3 mbar absolute)
- ◆ Compact size
- ◆ No moving parts
- ◆ Maintenance free

KV's HighVac vacuum pumps achieve vacuum levels in excess of 98% and offer a wide range of vacuum flow rates. They are ideal for vessel evacuation, process control, and high vacuum applications. Because the assembly has no moving parts it is maintenance free. The High Vac pump is ideal for applications where dust contamination is present.

Their high vacuum rates, compact size, design features allow system designers to use smaller and less costly components and reduce maintenance repair costs.

Technical specifications

Medium:	Filtered (50 μ), unlubricated air
Operating pressure:	5.5 bar (g)
Operating temperature:	0°C to +50°C
Operating noise level:	72 dBA

Materials

Vacuum pump body:	Anodised aluminium
Venturi:	Brass
Seals:	NBR

Description

KVPHVP100: High Vac series vacuum pump with silencer

KVPHVP200: High Vac series vacuum pump with silencer

KVPHVP300: High Vac series vacuum pump with silencer

KV venturi vacuum pumps are designed to operate at peak efficiency at a supply pressure of 5.5 bar.

Ordering Information:

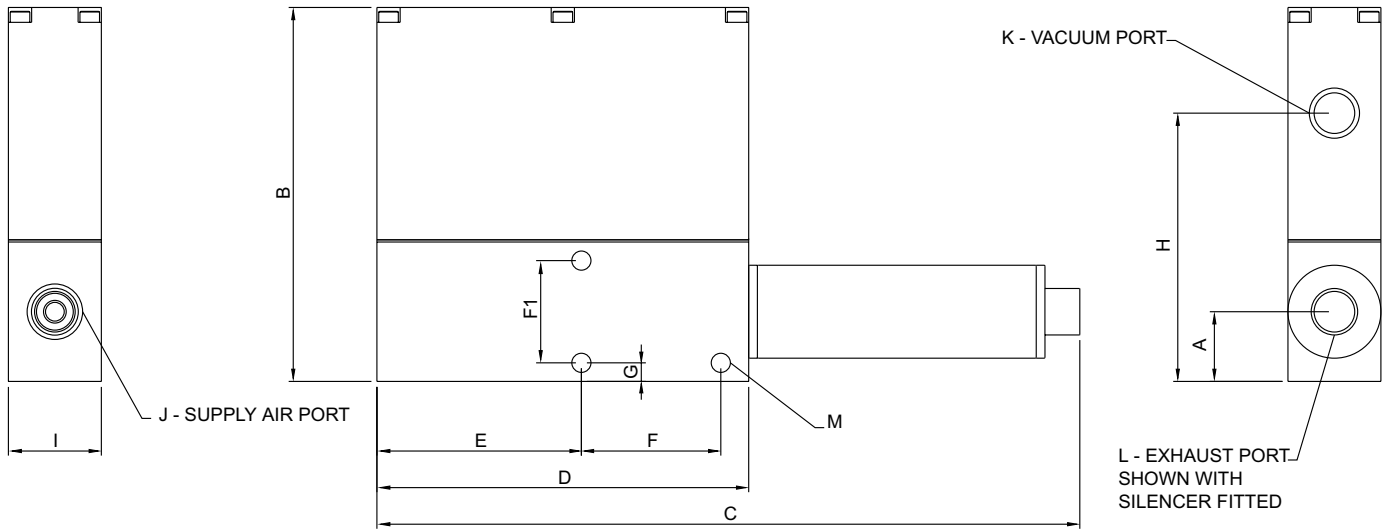
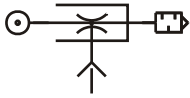
The units have fixed venturis, therefore pumps should be selected dependent upon application requirements.

	KVPHVP 100
KAVAC vacuum pump Highvac series	
Maximum vacuum flow	
100	= 34.0 (nl/min)
200	= 90.6 (nl/min)
300	= 170.0 (nl/min)



Dimensions and performance data

units mm



Type		Dimensions										J NPT	K NPT	L NPT	M	Attached Silencer
		A	B	C	D	E	F	F1	G	H	I					
KVPHVP100	Mini	9.40	57.25	116.30	81.3	45.20	-	14.7	2.15	41.5	19.05	1/4	1/8	1/4	3.0	AA4
KVPHVP200	Midi	19.05	102.20	192.10	101.6	55.90	38.10	-	5.10	73.3	25.40	1/4	1/4	1/2	5.1	ST8A
KVPHVP300	Maxi	19.05	102.20	249.00	127.0	63.50	38.10	-	5.10	73.3	25.40	3/8	1/4	1/2	5.1	ST8B

Vacuum flow in NI/min against vacuum level (- mbar gauge)

Type	Compressed air consumption nl/min @ 5.5 bar (g)	Vacuum flow versus vacuum level mbar @ 5.5 bar									
		Vac level	0	136	271	406	542	677	813	948	999
KVPHVP100	138.77	Flow	33.98	27.47	25.49	24.07	20.67	16.99	14.16	5.66	0.00
KVPHVP200	243.55	Flow	90.61	77.87	67.96	59.47	43.88	36.81	22.65	9.91	0.00
KVPHVP300	623.03	Flow	169.90	147.25	99.11	87.78	69.37	42.48	33.98	12.74	0.00