

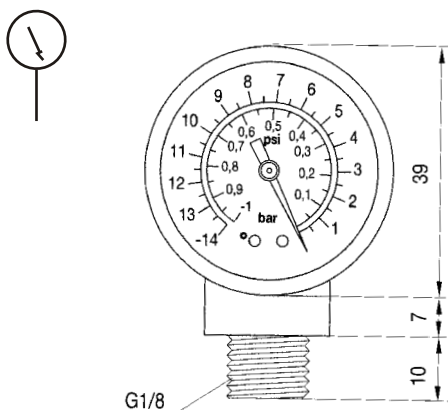
KAVAC Accessories

Vacuum Gauge and Adjustable Vacuum Sensors



Vacuum Gauge

The KVPVG150 vacuum gauge with a 39 mm diameter face and a G1/8 bottom male connection. Its vacuum range is 0 to -1016 mbar.



Dimensions

units mm

Part number	Description	Range (mbar)
KVPVG150	Vacuum gauge	0 to -1016
KVPSX4, KVPVS4	Vacuum sensor	-68 to -500
KVPSX5, KVPVS5	Vacuum sensor	-250 to -1016

Adjustable Vacuum Sensors

These units are ideal for use in automated systems to generate a low current electrical signal for input to a PLC or other logic controller. They are normally open, diaphragm operated and utilise low stressing deflecting contacts instead of sliding or pivoting parts, resulting in high reliability and long life.

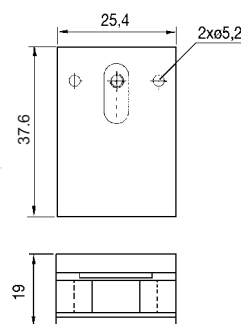
Description

KVPSX4, KVPSX5: Adjustable vacuum sensor with housing. Supplied with 20 M3 fixing screws.

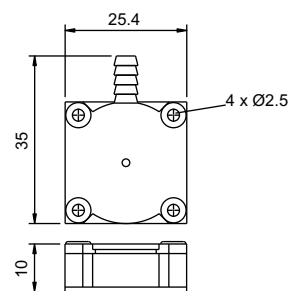
KVPVS4, KVPVS5: Adjustable vacuum sensor without housing



KVPSX4, KVPSX5



KVPVS4, KVPVS5



To reduce piping and ease installation, the vacuum sensors may be fastened directly to the KVP20, KVP31, and the KVP61 series of vacuum pumps.

Part Number	Range (mbar)	Hysteresis/deadband	Input voltage	Max. current	Operating temperature	Electrical connection
KVPSX4, KVPVS4	-68 to -500	1/2% max value	500VAC/24VDC	10 - 20mA	-10°C to +80°C	300 mm flying leads
KVPSX5, KVPVS5	-250 to -1016	1/2% max value	500VAC/24VDC	10 - 20mA	-10°C to +80°C	300 mm flying leads

Ordering Information: By part number

