

# RL10

## Pneumatic-hydraulic tools for blind rivets

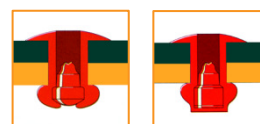
### Technical sheet

#### Technical parameters:

Type	RL 10
Maximum pressure	7 bar
Draw force	8 kN/6 bar
Working stroke	14 mm
Weight	1.4 kg
Output – Force / Weight	5.71 kN/kg
Height	243 mm
Length	273 mm
Hose connection	∅ 6 mm (G 1/4")
Consumption of air per 1 rivet (with exhaustion)	1.2 l
Consumption of air per 1 rivet (without exhaustion)	0.2 l
Level of acoustic pressure	$L_{PAI} < 70$ dB(A)
Vibrations (ISO/FDIS 8662-11)	$a_{hw} < 2.5$ m/s <sup>2</sup>

#### Scope of use:

Diameter of the rivet	2,4	3/3,2	4	4,8/5	6	6,4
Aluminium, Copper, Brass	✓	✓	✓	✓		
Steel	✓	✓	✓			
Stainless	✓	✓	✓			
Nosepiece in the package	✓	✓	✓	✓		

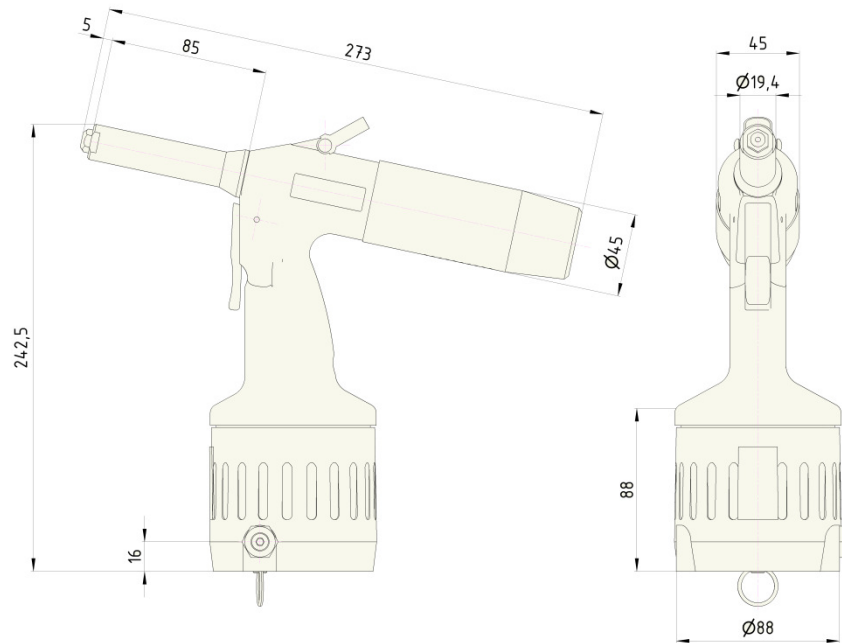


#### Description of tools:

- high output at small dimensions
- fluent regulation of the intensity of exhaustion
- low noise
- low maintenance demands
- simple operation
- large range of additional equipment
- ergonomic handle – fits into the hand well
- low value of transferred vibrations
- rotary joint air connection
- supply of pressured air optional from right or left which can be very easily modified for right or left-hand persons
- removable collecting vessel with adjustable turning of the outflow air from exhaustion curtain
- spare nosepieces on the bottom of the tools
- safety closure preventing release of the mandrel when the collecting vessel is removed
- safety over-pressure valve
- reliability verified in practice



**Dimensions of tools:**

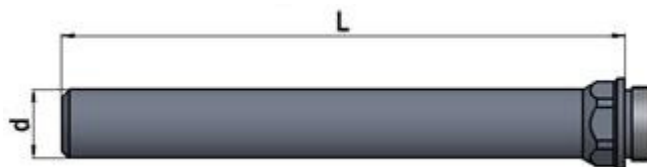
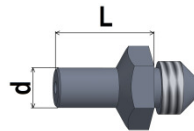


**Standard accessories:**

- ⊙ Nosepieces, see table + necessary wrenches for the replacement of nosepieces
- ⊙ Set for adding oil
- ⊙ Air joint connection + Allen wrench for tightening air connection
- ⊙ User and Maintenance Manual, list of spare parts

**Other optional accessories:**

- ⊙ Jaws for stainless rivets
- ⊙ Prolonged nosepieces by 5 mm from L = 10 to 25 mm
- ⊙ Special nosepieces for certain types of rivets
- ⊙ Prolonged noses  $\varnothing d = 19.5$  mm with lengths L = 120, 160, 200, 225, 250, 300 mm
- ⊙ Noses with smaller  $\varnothing d = 16.4$  mm with lengths L = 75, 200 mm



- ⊙ Angular head
- ⊙ Shortened collecting vessel
- ⊙ Collecting vessel with damper
- ⊙ Adapter for removing mandrels by  $\varnothing 6$  and  $\varnothing 10$  mm hoses
- ⊙ Inductive sensor for reading of removed rivet mandrels