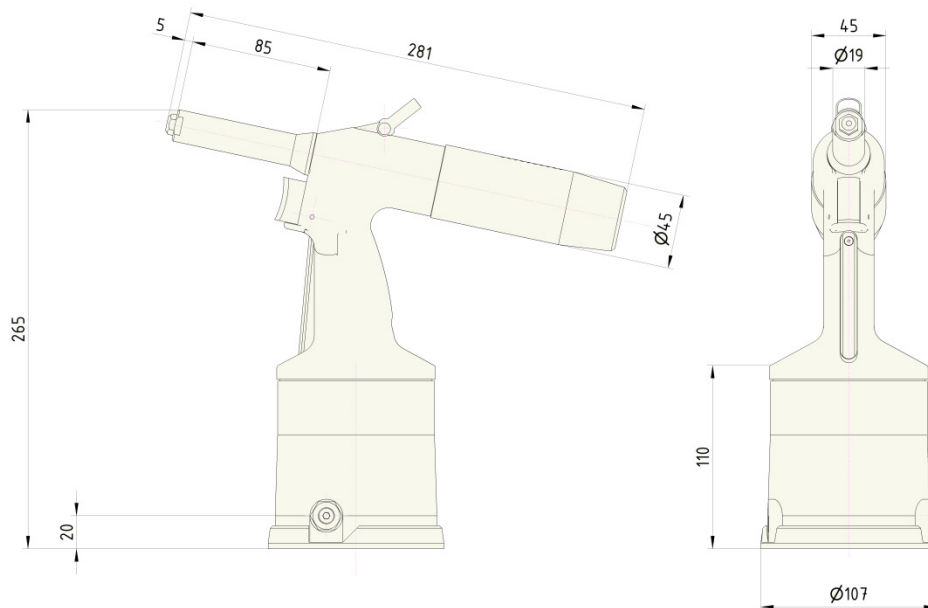


Dimensions of tools:

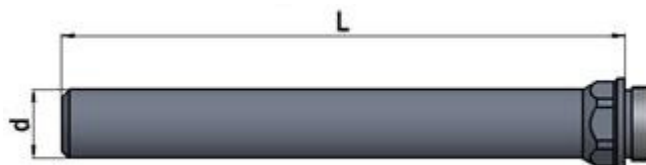
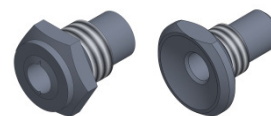
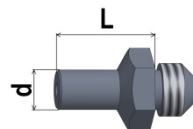


Standard accessories:

- ⊙ Nosepieces, see table + necessary wrenches for the replacement of nosepieces
- ⊙ Set for adding oil
- ⊙ Air joint connection + Allen wrench for tightening air connection
- ⊙ User and Maintenance Manual, list of spare parts

Other optional accessories:

- ⊙ Jaws for stainless rivets
- ⊙ Prolonged nosepieces by 5 mm from L = 10 to 25 mm
- ⊙ Special nosepieces for certain types of rivets, e.g. Bulb-Tite
- ⊙ Prolonged nose $\varnothing d = 19.5$ mm with lengths L = 120, 160, 200, 225, 250, 300 mm
- ⊙ Noses with smaller $\varnothing d = 16.4$ mm with lengths L = 75, 200 mm



- ⊙ Angular head
- ⊙ Shortened collecting vessel
- ⊙ Collecting vessel with damper
- ⊙ Adapter for removing mandrels by $\varnothing 6$ and $\varnothing 10$ mm hoses
- ⊙ Inductive sensor for reading of removed rivet mandrels