

# RL40

## Pneumatic-hydraulic tools for blind rivets

### Technical sheet

#### Technical parameters:

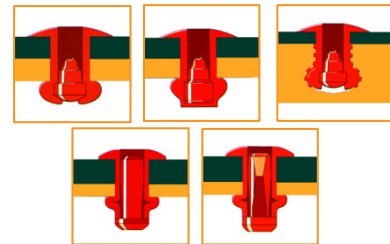
Type	RL 40
Maximum pressure	7 bar
Draw force	14.7 kN/6 bar
Working stroke	14 mm
Weight	2.0 kg
Output – Force / Weight	7.35 kN/kg
Height	280 mm
Length	302 mm
Hose connection	ø 6 mm (G 1/4")
Consumption of air per 1 rivet (with exhaustion)	2 l
Consumption of air per 1 rivet (without exhaustion)	0.2 l
Level of acoustic pressure	$L_{PAI} < 70$ dB(A)
Vibrations (ISO/FDIS 8662-11)	$a_{hw} < 2.5$ m/s <sup>2</sup>

#### Scope of use:

Diameter of the rivet	2,4	3/3,2	4	4,8/5	6	6,4
-----------------------	-----	-------	---	-------	---	-----

Aluminium, Copper, Brass			✓	✓	✓	✓
Steel			✓	✓	✓	✓
Stainless			✓	✓	✓	✓

Nosepiece in the package			✓	✓	✓	✓
--------------------------	--	--	---	---	---	---

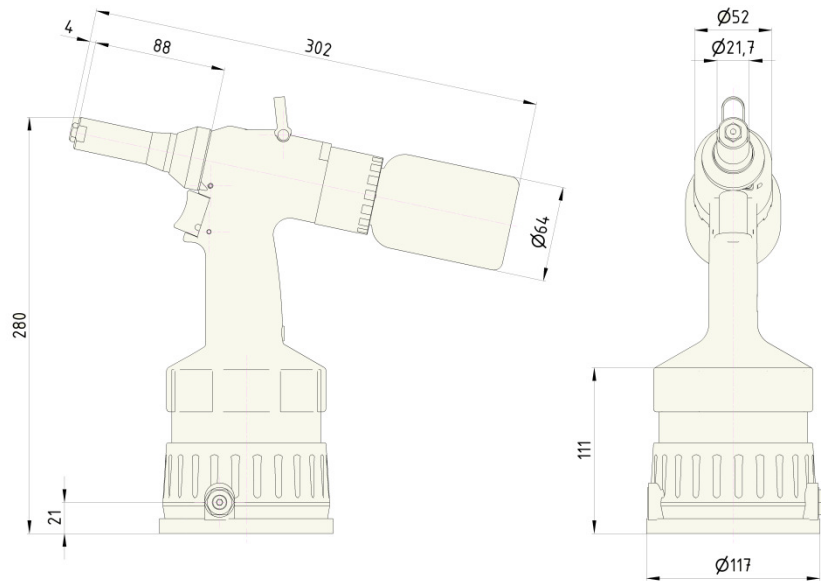


#### Description of tools:

- high output at small dimensions
- fluent regulation of the intensity of exhaustion
- low noise
- low maintenance demands
- simple operation
- ergonomic handle – fits into the hand well
- low value of transferred vibrations
- rotary joint air connection
- supply of pressured air optional from right or left which can be very easily modified for right or left-hand persons
- removable collecting vessel
- curtain
- spare nosepieces on the bottom of the tools
- safety closure preventing release of the mandrel when the collecting vessel is removed
- safety over-pressure valve
- reliability verified in practice



### Dimensions of tools:

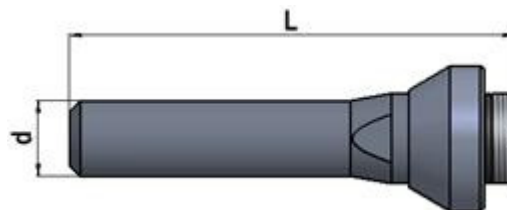
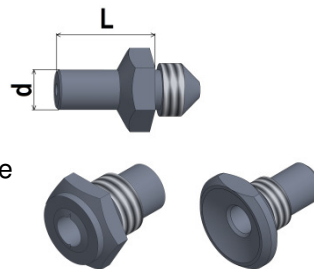


### Standard accessories:

- ⊙ Nosepieces, see table + necessary wrenches for the replacement of nosepieces
- ⊙ Set for adding oil
- ⊙ Air joint connection + Allen wrench for tightening air connection
- ⊙ User and Maintenance Manual, list of spare parts

### Other optional accessories:

- ⊙ Prolonged nosepieces by 5 mm from L = 10 to 25 mm
- ⊙ Special nosepieces for certain types of rivets, e.g. Bulb-Tite
- ⊙ Prolonged noses  $\varnothing d = 22$  mm with lengths L = 130, 170, 210, 235, 260, 310 mm



- ⊙ Shortened collecting vessel
- ⊙ Collecting vessel with reinforced bottom
- ⊙ Adapter for removing mandrels by  $\varnothing 6$  and  $\varnothing 10$  mm hoses
- ⊙ Inductive sensor for reading of removed rivet mandrels