

# RL60

## Pneumatic-hydraulic tools for blind rivets

### Technical sheet

#### Technical parameters:

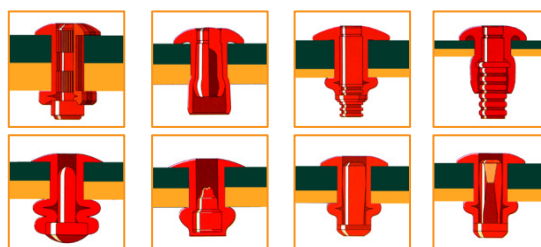
Type	RL 60
Maximum pressure	7 bar
Draw force	18.2 kN/6 bar
Working stroke	26 mm
Weight	2.6 kg
Output – Force / Weight	7 kN/kg
Height	340 mm
Length	323 mm
Hose connection	ø 6 mm (G 1/4")
Consumption of air per 1 rivet (with exhaustion)	4.8 l
Consumption of air per 1 rivet (without exhaustion)	3 l
Level of acoustic pressure	$L_{PAI} < 70 \text{ dB(A)}$
Vibrations (ISO/FDIS 8662-11)	$a_{hw} < 2.5 \text{ m/s}^2$

#### Scope of use:

Diameter of the rivet	4	4,8/5	6	6,4	6,4*	8
Aluminium, Copper, Brass	✓	✓	✓	✓	✓	✓
Steel	✓	✓	✓	✓	✓	
Stainless	✓	✓	✓	✓	✓	
Nosepiece in the package	✓	✓	✓	✓	✓	

\* structural rivets: TIBULB, M-LOCK, MAGNA-BULB,

#### HUCKLOCK

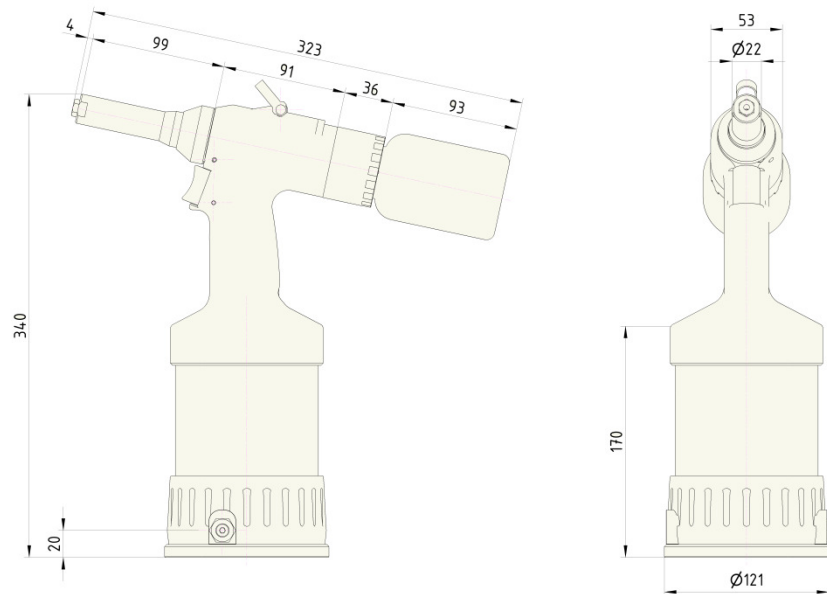


#### Description of tools:

- high output
- high working stroke
- fluent regulation of the intensity of exhaustion
- low noise
- low maintenance demands
- simple operation
- ergonomic handle – fits into the hand well
- low value of transferred vibrations
- rotary joint air connection
- supply of pressured air optional from right or left which can be very easily modified for right or left-hand persons
- removable collecting vessel
- curtain
- spare nosepieces on the bottom of the tools
- safety closure preventing release of the mandrel when the collecting vessel is removed
- safety over-pressure valve
- reliability verified in practice



### Dimensions of tools:



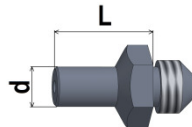
### Standard accessories:

- ⊙ Nosepieces, see table + necessary wrenches for the replacement of nosepieces
- ⊙ Set for adding oil
- ⊙ Air joint connection + Allen wrench for tightening air connection
- ⊙ User and Maintenance Manual, list of spare parts

### Other optional accessories:

- ⊙ Shredding head for rivets with grooved mandrel 0.8 mm

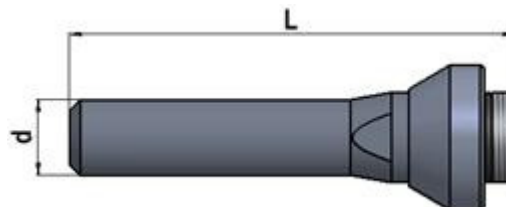
- ⊙ Prolonged nosepieces by 5 mm from  $L = 10$  to 25 mm



- ⊙ Special nosepieces for certain types of rivets, e.g. Monobolt



- ⊙ Prolonged noses  $\varnothing d = 22$  mm with lengths  $L = 130, 170, 210, 235, 260, 310$  mm



- ⊙ Reinforced collecting vessel
- ⊙ Adapter for removing mandrels by  $\varnothing 6$  and  $\varnothing 10$  mm hoses
- ⊙ Inductive sensor for reading of removed rivet mandrels