

Fastening Technology / Threaded Inserts

RIV-TI[®] Flex

Blind Nuts







Contents

Page

RIV-TI® Flex blind nuts	Overview		4
	Standard head	EPDM/stainless steel	6
		EPDM/brass	7
	Large head	EPDM/stainless steel	8
		EPDM/brass	8
	Snap head	EPDM/stainless steel	9
		EPDM/brass	9
	Tension bushing	EPDM/stainless steel	10
		EPDM/brass	10

RIV-TI® Flex blind nuts



RIV-TI® Flex blind nuts consist of an elastic EPDM rivet body comprising a stainless steel or brass threaded insert. The fastener actively absorbs shocks, vibrations and noise. All that is needed to distort the EPDM rivet body is a screw; no special tools are required! The result is a well-formed distorted ridge. The fastener is removable and can be re-used for other jobs.

RIV-TI® Flex blind nuts can also be used in blind hole applications. Turning the screw causes the distortion area to clamp against the internal wall of the hole. The retention force is dictated by the coarseness of the hole in the component.

RIV-TI® Flex is suitable for a very broad range of applications. The EPDM rivet body stands out for its high weather resistance and is thus exceptionally well-suited for use outdoors in particular. We are also able to manufacture rivet bodies using other combinations of materials to suit your particular needs. Neoprene or NBR rivet bodies are available subject to minimum order volumes being placed.

Neoprene exhibits positive properties in numerous applications and is electrically non-conductive. NBR is highly resistant to mineral oils, greases and hydrocarbons.



Benefits at a glance

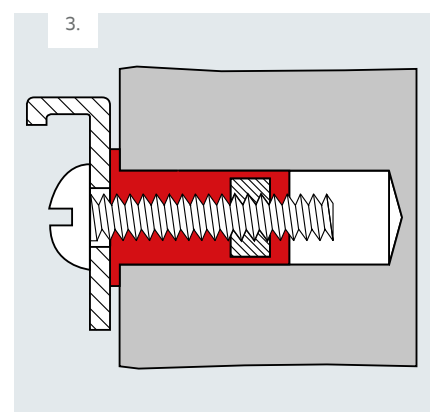
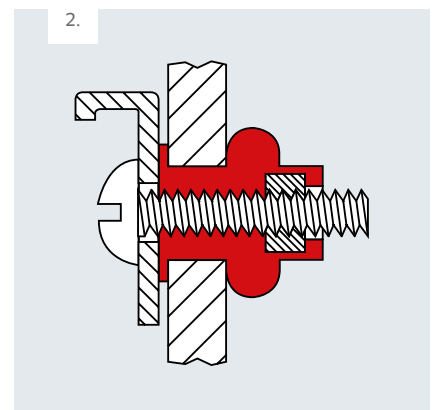
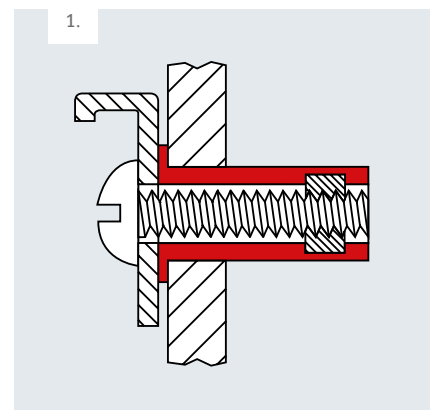
- Corrosion-resistant
- One-sided installation (blind) possible; no tools required
- Vibration-damping and noise-absorbing
- Reliable fit, even when using problematic fasteners such as hard / soft connectors
- Dielectric (neoprene on request)
- Temperature-resistant from -30 °C to +80 °C
- Gentle on sensitive materials and surfaces
- Removeable

Easy, rational and time-saving installation - no tools required

1. Prepare the drilled hole and insert the RIV-TI® Flex.
2. Turn the screw to form the blind side footprint; no special tools are required.
3. Use in blind side holes: RIV-TI® Flex presses against the drilled hole wall and forms a frictionless tight fit.

Form of delivery

Threads:	M3, M4, M5, M6, M8, M10, M12
Material Sleeve:	EPDM, black
Material Threaded insert:	A2 stainless steel (1.4567) or brass (2.0401)





RIV-TI® Flex blind nuts

Standard head

Especially suited to all applications where vibration damping and shock absorbance are prime considerations.

Material

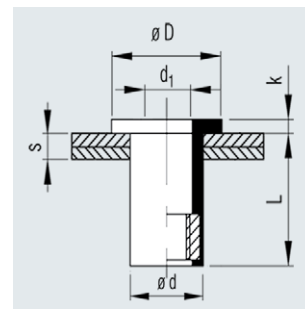
Sleeve:

EPDM, black

(dielectric on request)

Threaded insert:

stainless steel



Gewinde d1	Klemmlängenbereich s [mm]	Bohrloch Ø [mm]	Schaft Ø d [mm]	Kopf Ø D [mm]	Kopfhöhe k [mm]	Schaftlänge L [mm]	Anziehdrehmoment [Nm]	Artikel-Nr.
M3	0.4 - 4.0	8.0	7.9	11.0	1.2	11.4	0.25 - 0.50	331 331 003
M4	0.4 - 4.0	8.0	7.9	11.0	1.2	11.4	0.25 - 0.39	331 340 003
M5	0.4 - 4.9	9.7	9.6	12.7	0.9	13.2	0.34 - 0.50	331 350 003
	0.85 - 5.9	9.7	9.6	14.0	1.0	16.0	0.29 - 0.69	331 351 003
	0.8 - 5.8	9.7	9.6	14.0	4.7	14.8	0.39 - 0.69	331 353 003
	4.0 - 10.0	9.7	9.6	14.0	0.9	20.6	0.29 - 0.88	331 357 003
	7.9 - 15.0	9.7	9.6	14.0	1.3	25.2	0.29 - 0.69	331 358 003
	20.5 - 30.0	9.7	9.6	14.0	1.3	37.7	0.59 - 0.98	331 349 003
M6	0.4 - 4.0	12.8	12.7	16.0	1.3	14.7	0.59 - 0.98	331 360 003
	4.7 - 8.7	12.8	12.7	16.0	1.3	19.0	0.59 - 0.98	331 367 003
	0.8 - 4.7	12.8	12.7	19.1	4.8	16.35	0.78 - 0.98	331 365 003
	6.4 - 11.5	12.8	12.7	16.3	2.0	24.7	0.78 - 0.98	331 362 003
M8	0.4 - 4.0	16.0	15.9	21.5	3.2	15.1	0.98 - 1.47	331 380 003
	3.95 - 9.5	16.0	15.9	21.5	5.7	22.2	0.98 - 1.57	331 381 003

Other designs available on request.



RIV-TI® Flex blind nuts

Standard head

Especially suited to all applications where vibration damping and shock absorbance are prime considerations.

Material

Sleeve:

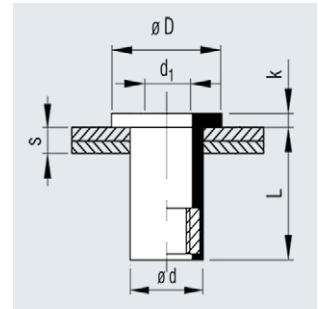


EPDM, black
(dielectric on request)

Threaded insert:



brass



Thread size d1	Grip range s [mm]	Hole ø [mm]	Shank ø d [mm]	Head ø D [mm]	Head height k [mm]	Shank length L [mm]	Tightening torque [Nm]	Article No.
M3	0.4 - 4.0	8.0	7.9	11.0	1.2	11.4	0.25 - 0.50	331 300 003
M4	0.4 - 4.0	8.0	7.9	11.0	1.2	11.4	0.25 - 0.39	331 301 003
M5	0.4 - 4.9	9.7	9.6	12.7	0.9	13.2	0.34 - 0.50	331 302 003
	0.85 - 5.9	9.7	9.6	14.0	1.0	16.0	0.29 - 0.69	331 303 003
	0.8 - 5.8	9.7	9.6	14.0	4.7	14.8	0.39 - 0.69	331 304 003
	4.0 - 10.0	9.7	9.6	14.0	0.9	20.6	0.29 - 0.88	331 305 003
	7.9 - 15.0	9.7	9.6	14.0	1.3	25.2	0.29 - 0.69	331 306 003
	20.5 - 30.0	9.7	9.6	14.0	1.3	37.7	0.59 - 0.98	331 307 003
M6	0.4 - 4.0	12.8	12.7	16.0	1.3	14.7	0.59 - 0.98	331 308 003
	4.7 - 8.7	12.8	12.7	16.0	1.3	19.0	0.59 - 0.98	331 309 003
	0.8 - 4.7	12.8	12.7	19.1	4.8	16.35	0.78 - 0.98	331 310 003
	6.4 - 11.5	12.8	12.7	16.3	2.0	24.7	0.78 - 0.98	331 312 003
M8	0.4 - 4.0	16.0	15.9	21.5	3.2	15.1	0.98 - 1.47	331 313 003
	3.95 - 9.5	16.0	15.9	21.5	5.7	22.2	0.98 - 1.57	331 314 003
M10	2.5 - 3.5	20.1	20.0	25.0	3.0	21.0	4.41 - 5.39	331 315 003
	0.38 - 11.1	19.15	19.05	29.5	4.75	22.25	4.41 - 5.39	331 316 003
M12	2.5 - 3.5	24.1	24.0	27.0	3.0	23.5	5.88 - 6.86	331 317 003

Other designs available on request.



RIV-TI® Flex blind nuts

Large head

Ideal for use in soft and thin materials. The large head provides for ideal load distribution.

Material

Sleeve:

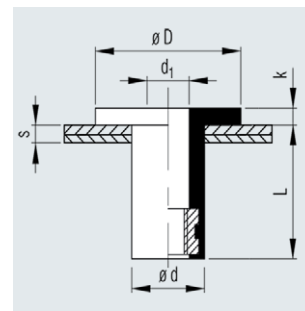


EPDM, black
(dielectric on request)

Threaded insert:



stainless steel



Thread size d1	Grip range s [mm]	Hole Ø [mm]	Shank Ø d [mm]	Head Ø D [mm]	Head height k [mm]	Shank length L [mm]	Tightening torque [Nm]	Article No.
M3	9.5 - 13.0	6.2	6.1	14.0	0.9	24.0	0.25 - 0.50	331 333 003
M4	0.4 - 4.4	8.0	7.9	19.05	1.5	12.7	0.25 - 0.39	331 343 003
M5	0.8 - 5.8	9.7	9.6	19.0	2.0	16.0	0.29 - 0.69	331 354 003
M6	0.4 - 4.0	12.8	12.7	20.0	1.3	14.7	0.59 - 0.98	331 363 003

Other designs available on request.

Large head

Ideal for use in soft and thin materials. The large head provides for ideal load distribution.

Material

Sleeve:

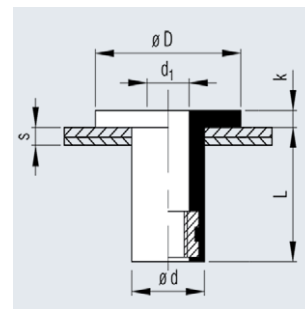


EPDM, black
(dielectric on request)

Threaded insert:



brass



Thread size d1	Grip range s [mm]	Hole Ø [mm]	Shank Ø d [mm]	Head Ø D [mm]	Head height k [mm]	Shank length L [mm]	Tightening torque [Nm]	Article No.
M3	9.5 - 13.0	6.2	6.1	14.0	0.9	24.0	0.25 - 0.50	331 320 003
M4	0.4 - 4.4	8.0	7.9	19.05	1.5	12.7	0.25 - 0.39	331 321 003
M5	0.8 - 5.8	9.7	9.6	19.0	2.0	16.0	0.29 - 0.69	331 322 003
M6	0.4 - 4.0	12.8	12.7	20.0	1.3	14.7	0.59 - 0.98	331 323 003

Other designs available on request.



RIV-TI® Flex blind nuts

Snap head

Ideal for use on assembly lines. The snap function provided by the blind nut enables it to fit tightly in the base material before the assembly work is completed.

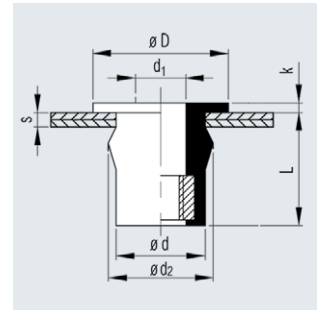
Material

Sleeve: Threaded insert: stainless

EPDM, black

(dielectric on request)

steel



Thread d1	Grip range s [mm]	Hole Ø [mm]	Shank Ø d [mm]	Shank Ø d2 [mm]	Head Ø D [mm]	Head height k [mm]	Shank length L [mm]	Tightening torque [Nm]	Article No.
M4	0.4 - 1.3	8.0	7.9	9.3	12.7	1.3	9.7	0.34 - 0.50	331 370 003
M5	0.5 - 1.5	9.7	9.6	10.25	12.7	1.5	9.5	0.34 - 0.50	331 371 003
	0.4 - 1.3	9.7	9.6	10.25	14.2	3.2	10.8	0.34 - 0.50	331 372 003

Other designs available on request.

Snap head

Ideal for use on assembly lines. The snap function provided by the blind nut enables it to fit tightly in the base material before the assembly work is completed.

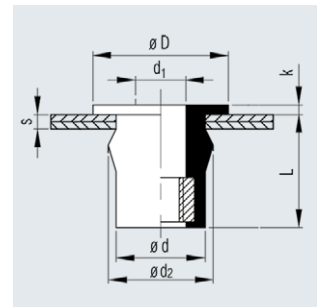
Material

Sleeve: Threaded insert:

EPDM, black

(dielectric on request)

brass



Thread d1	Grip range s [mm]	Hole Ø [mm]	Shank Ø d [mm]	Shank Ø d2 [mm]	Head Ø D [mm]	Head height k [mm]	Shank length L [mm]	Tightening torque [Nm]	Article No.
M4	0.4 - 1.3	8.0	7.9	9.3	12.7	1.3	9.7	0.34 - 0.50	331 324 003
M5	0.5 - 1.5	9.7	9.6	10.25	12.7	1.5	9.5	0.34 - 0.50	331 325 003
	0.4 - 1.3	9.7	9.6	10.25	14.2	3.2	10.8	0.34 - 0.50	331 326 003

Other designs available on request.



RIV-TI® Flex blind nuts

Tension bushing

The metal tension bushing makes for a constant tightening torque.

Material

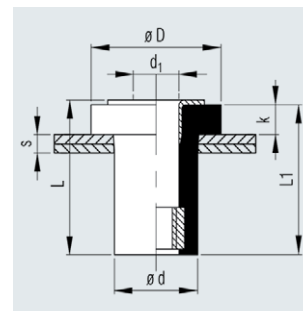
Sleeve:

EPDM, black

(dielectric on request)

Threaded insert:

stainless steel



Thread size d1	Grip range s [mm]	Hole ø [mm]	Shank ø d [mm]	Head ø D [mm]	Head height k [mm]	Shank length L [mm]	Tightening torque [Nm]	Article No.
M4	0.5 - 2.0	8.0	7.9	12.0	3.5	11.0	0.10 - 0.15	331 375 003

Other designs available on request.

Tension bushing

The metal tension bushing makes for a constant tightening torque.

Material

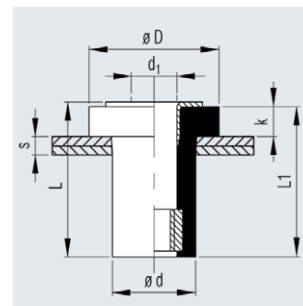
Sleeve:

EPDM, black

(dielectric on request)

Threaded insert:

brass



Thread size d1	Grip range s [mm]	Hole ø [mm]	Shank ø d [mm]	Head ø D [mm]	Head height k [mm]	Shank length L [mm]	Tightening torque [Nm]	Article No.
M4	0.5 - 2.0	8.0	7.9	12.0	3.5	11.0	0.10 - 0.15	331 327 003

Other designs available on request.