

# **STANDARD FITTINGS SILENCERS**

**PLUS**

**SUITABLE BOTH FOR LOW AND HIGH  
TEMPERATURE ACCORDINGLY TO THE  
CONSTRUCTION MATERIAL**

---

**DIFFERENT KIND OF MATERIAL FOR  
EVERY KIND OF APPLICATION**

---

**COMPACTS**



p. 359 / **6100**



p. 359 / **6150**



p. 360 / **6200**



p. 360 / **6250**



p. 360 / **6300**



p. 360 / **6350**



p. 361 / **6400**



p. 361 / **6450**



p. 361 / **6500**



p. 361 / **6550**



p. 362 / **6600**



p. 362 / **6650**



p. 362 / **6670**



p. 362 / **6700**



p. 363 / **6750**



p. 363 / **6780**



p. 363 / **6820**



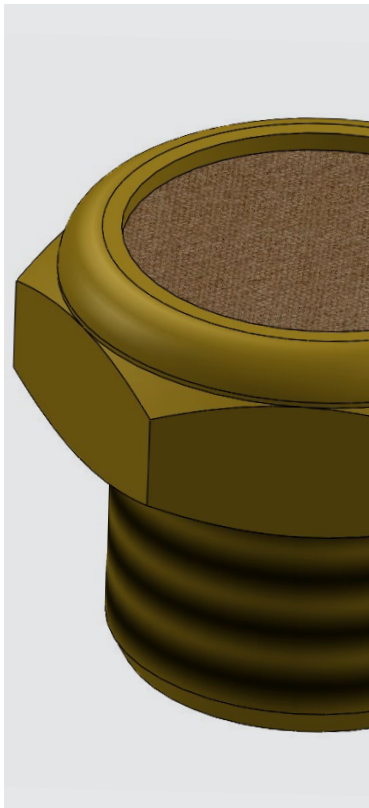
p. 363 / **6850**



p. 364 / **6880**



p. 364 / **6882**



-20°C ÷ +80°C  
-20°C ÷ +300°C  
for codes 6880 and 6882



10 Bar  
6 Bar for code 6700,  
6750 and 6780



Compressed air



Parallel gas BSPP ISO 228  
from G1/8" to G1"  
Metric ISO 262 - M5



- 6100, 6150, 6550 and 6600 sinterized spheric bronze powder on the coppered steel base
- 6200, 6250, 6300, 6350, 6400, 6650 and 6670 sinterized spheric bronze powder on the brass base
- 6450 and 6500 stainless steel wire on the brass base
- 6700 and 6750 plastic
- 6780 polyethylene
- 6820 stainless steel wire on nylon base
- 6850 stainless steel wire on stainless steel base
- 6880 stainless steel AISI 316L



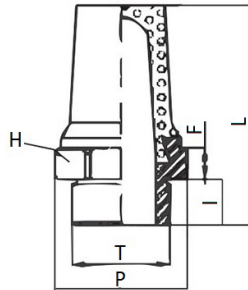
Products in compliance with the directive 2002/95/EC

**RoHS2**

Products in compliance with the directive 2011/65/EU

**6100**

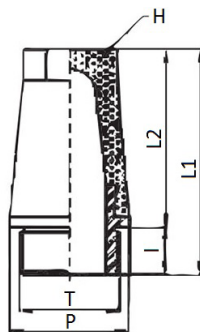
Cone-shaped silencer of sinterized spheric bronze with hex coppered steel base



CODE	T	ØP	I	F	L	H	GR.
6100TRM5	M5	5,5	3,5	3,0	17,0	7	2,0
6100TR18	G1/8"	10,5	4,5	3,5	21,0	12	6,0
6100TR14	G1/4"	12,5	6,0	4	27,0	15	12,5
6100TR38	G3/8"	17,0	7,0	5,4	35,0	19	23,0
6100TR12	G1/2"	20,5	8,0	6,0	41,5	23	39,0
6100TR34	G3/4"	26,5	9,0	7,5	54,0	30	78,5
6100TR1	G1"	33,0	11,0	8,0	67,0	36	149,5

**6150**

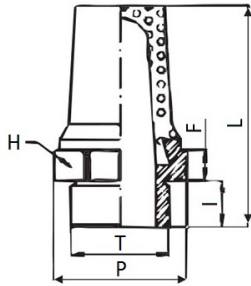
Hexagonal head cone-shaped silencer of sinterized spheric bronze with circular coppered steel base



CODE	T	ØP	I	L1	L2	H	GR.
6150TR18	G1/8"	11,5	4,5	22,5	17,0	8	6,5
6150TR14	G1/4"	15,0	6,0	28,5	22,0	10	12,5
6150TR38	G3/8"	19,0	7,0	36,0	29,0	13	23,5
6150TR12	G1/2"	23,0	8,0	44,0	35,0	15	39,0
6150TR34	G3/4"	30,0	9,0	56,0	47,0	19	77,5
6150TR1	G1"	37,0	11,0	66,0	58,0	24	139,0

**6200**

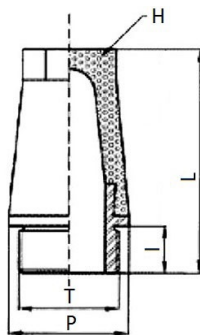
Cone-shaped silencer of sinterized spherical bronze riveted on hexagonal brass base



CODE	T	ØP	I	F	L	H	GR.
6200TRM5	M5	7,5	3,5	4,0	18,5	8	2,5
6200TR18	G1/8"	12,5	6,0	4,0	26,0	13	9,5
6200TR14	G1/4"	14,5	6,0	5,0	34,0	16	16,5
6200TR38	G3/8"	19,0	8,0	5,0	41,0	19	26,5
6200TR12	G1/2"	22,5	8,0	6,0	46,0	24	46,5
6200TR34	G3/4"	28,5	10,0	6,0	56,0	30	81,5
6200TR1	G1"	35,0	10,0	6,0	66,0	36	134,0

**6250**

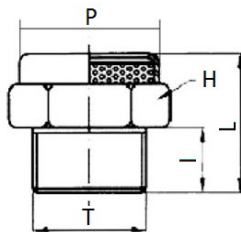
Hexagonal head cone-shaped silencer of sinterized spherical bronze riveted on circular brass base



CODE	T	ØP	I	L	H	GR.
6250TR18	G1/8"	13,0	7,0	27,0	6,0	8,5
6250TR14	G1/4"	16,0	8,0	30,0	7,0	13
6250TR38	G3/8"	19,0	8,0	40,0	10,0	23
6250TR12	G1/2"	24,0	10,0	46,0	13,0	40
6250TR34	G3/4"	30,0	10,0	54,0	17,0	73,5
6250TR1	G1"	38,0	10,0	61,0	22,0	145

**6300**

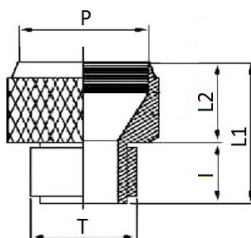
Silencer of sinterized spherical bronze riveted on hexagonal brass pastille base



CODE	T	ØP	I	L	H	GR.
6300TRM5	M5	6,5	4,0	8,5	8	2,0
6300TR18	G1/8"	11,0	6,0	12,0	13	6,5
6300TR14	G1/4"	15,5	8,0	16,0	16	11,0
6300TR38	G3/8"	18,5	8,0	17,0	19	16,5
6300TR12	G1/2"	22,0	10,0	18,0	24	26,0
6300TR34	G3/4"	28,0	10,0	19,0	30	39,5
6300TR1	G1"	34,0	10,0	20,0	36	60,0

**6350**

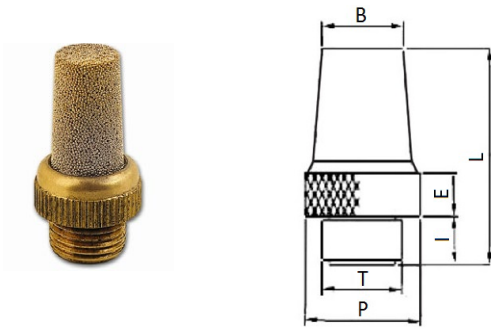
Silencer of sinterized spherical bronze riveted on circular knurled brass pastille base



CODE	T	ØP	I	L1	L2	GR.
6350TR18	G1/8"	11,0	7,0	13,0	6,0	7,0
6350TR14	G1/4"	14,0	8,0	16,0	6,0	7,0
6350TR38	G3/8"	17,0	8,0	14,0	6,0	10,0
6350TR12	G1/2"	22,0	10,0	18,0	8,0	10,0
6350TR34	G3/4"	28,0	10,0	18,0	10,0	12,0
6350TR1	G1"	34,0	10,0	19,0	9,0	12,0

## 6400

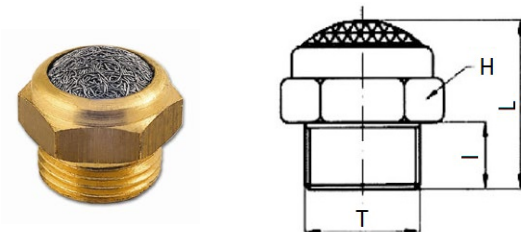
Cone-shaped silencer of sinterized spherical bronze riveted on circular knurled brass base



CODE	T	ØP	I	B	E	L	GR.
6400TR18	G1/8"	13,0	7,0	8,5	4,0	37,0	9
6400TR14	G1/4"	16,0	8,0	11,0	4,5	34,0	13,5
6400TR38	G3/8"	19,0	8,0	14,0	5,0	41,0	23
6400TR12	G1/2"	24,0	10,0	17,0	5,0	46,0	45
6400TR34	G3/4"	30,0	10,0	21,0	5,0	56,0	80
6400TR1	G1"	38,0	10,0	26,5	6,0	66,0	133,5

## 6450

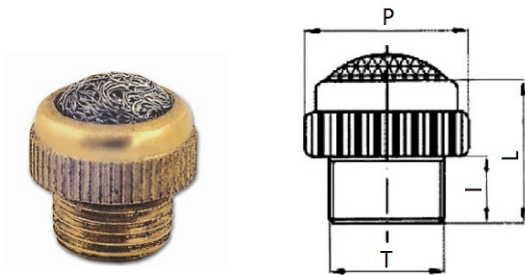
Stainless steel wire silencers on hexagonal brass base



CODE	T	I	L	H	GR.
6450TRM5	M5	4,0	8,5	8,0	1,5
6450TR18	G1/8"	6,0	15,0	13,0	6,0
6450TR14	G1/4"	7,0	19,0	16,0	10,5
6450TR38	G3/8"	8,0	20,0	19,0	16,5
6450TR12	G1/2"	10,0	22,0	24,0	24,5
6450TR34	G3/4"	10,0	24,0	30,0	37,0
6450TR1	G1"	12,0	28,0	36,0	56,5

## 6500

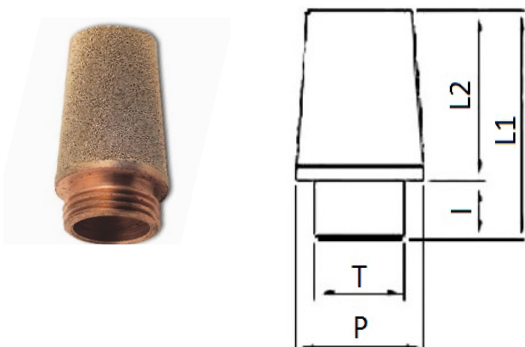
Silencer of stainless steel wire riveted on circular knurled brass base



CODE	T	ØP	I	L	GR.
6500TR18	G1/8"	13,0	7,0	14,0	5
6500TR14	G1/4"	16,0	8,0	18,0	8,5
6500TR38	G3/8"	19,0	8,0	20,0	13,5
6500TR12	G1/2"	24,0	10,0	22,0	23,5
6500TR34	G3/4"	30,0	10,0	24,0	30,5
6500TR1	G1"	38,0	10,5	27,0	57,5

## 6550

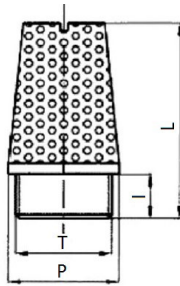
Cone e-shaped silencer of sinterized spherical bronze with circular coppered steel base



CODE	T	P	I	L1	L2	GR.
6550TR18	G1/8"	11,5	4,5	21,0	16,5	6,0
6550TR14	G1/4"	15,0	6,0	25,0	19,0	11,5
6550TR38	G3/8"	19,0	7,0	34,5	27,5	24,0
6550TR12	G1/2"	23,0	8,0	43,0	35,0	44,5
6550TR34	G3/4"	30,0	9,0	50,0	41,0	73,0
6550TR1	G1"	37,0	11,0	60,5	49,5	137,5

**6600**

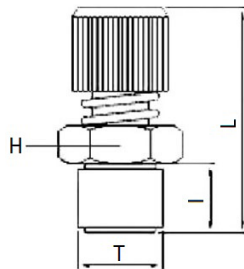
Cone e-shaped silencer of sinterized spherical bronze with circular brass coppered and screwdriver



CODE	T	P	I	L	GR.
6600TR18	G1/8"	11,5	4,5	22,0	6,0
6600TR14	G1/4"	15,0	6,0	26,0	13,0
6600TR38	G3/8"	19,0	7,0	34,5	24,5
6600TR12	G1/2"	23,0	8,0	43,0	42,0
6600TR34	G3/4"	30,0	9,0	50,0	75,0
6600TR1	G1"	37,0	11,0	60,5	136,0

**6650**

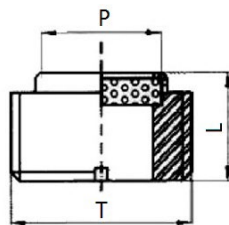
Silencer of sinterized bronze pastille with flow control



CODE	T	L MIN	L MAX	I	H	GR.
6650TR18	G1/8"	26,0	28,0	6,0	13	16,0
6650TR14	G1/4"	30,0	32,0	8,0	15	23,0
6650TR38	G3/8"	35,0	38,0	10,0	22	48,0
6650TR12	G1/2"	37,0	40,0	11,0	22	59,0

**6670**

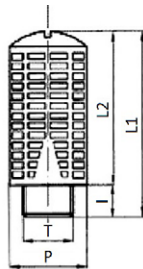
Cone-shaped silencer of sinterized spherical pastille with screwdriver



CODE	T	ØP	L	GR.
6670TR18	G1/8"	6,0	5,0	1,37
6670TR14	G1/4"	8,0	6,0	2,91
6670TR38	G3/8"	10,0	7,0	6,33
6670TR12	G1/2"	15,0	8,0	11,69
6670TR34	G3/4"	20,0	9,0	14,56
6670TR1	G1"	26,0	10,0	28,26

**6700**

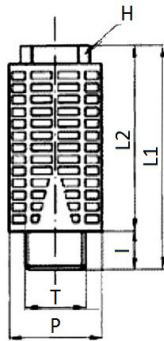
Plastic dynamic silencer with balls



CODE	T	P	I	L1	L2	GR.
6700TR18	G1/8"	15	6	32,5	26,5	4,0
6700TR14	G1/4"	19,5	8	43	35	8,0
6700TR38	G3/8"	24,5	11	58	47	18,0
6700TR12	G1/2"	24,5	11	58	47	19,0
6700TR34	G3/4"	48	18	115	97	115,0
6700TR1	G1"	48	18	115	97	115,0

6750

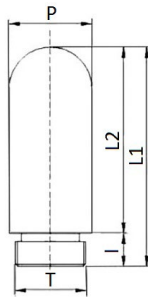
Plastic dynamic silencer with balls



CODE	T	P	I	L1	L2	H	GR.
6750TR18	G1/8"	16	6	34	28	10	4,0
6750TR14	G1/4"	19	8	44	36	12	7,0
6750TR38	G3/8"	24	10	56	47	16	14,0
6750TR12	G1/2"	24	10	56	47	16	15,0

6780

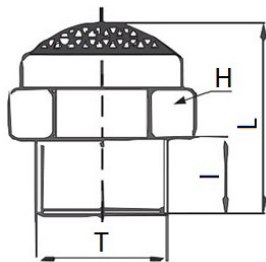
Noise silencer in polyethylene



CODE	T	ØP	I	L1	L2	GR.
6780TRM5	M5	7,0	4,0	24,5	20,5	2,8
6780TR18	G1/8"	13,0	7,5	32,5	25,0	3,7
6780TR14	G1/4"	17,0	8,0	39,0	31,0	10,0
6780TR38	G3/8"	25,0	11,0	65,0	54,0	13,5
6780TR12	G1/2"	25,0	11,0	69,0	58,0	37,0
6780TR34	G3/4"	37,0	15,5	138,0	122,5	47,0
6780TR1	G1"	47,0	19,5	157,0	137,5	90,0

6820

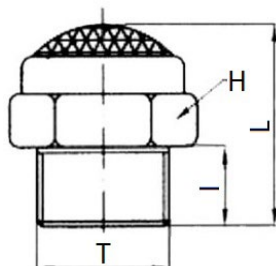
Inox wire silencer on nylon base



CODE	T	I	L	H	GR.
6820TR18	G1/8"	6	15	13	1,5
6820TR14	G1/4"	7	18	16	2,8
6820TR38	G3/8"	8	20	19	4,5
6820TR12	G1/2"	10	22	24	7,5

6850

Inox wire silencer

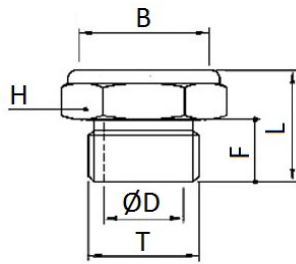


CODE	T	I	L	H	GR.
6850TR18	G1/8"	6	15	13	5,0
6850TR14	G1/4"	7	18	16	1,0
6850TR38	G3/8"	8	20	19	1,5
6850TR12	G1/2"	10	22	24	2,5
6850TR34	G3/4"	10	26	30	4,0
6850TR1	G1"	12	28	36	9,5



**6880**

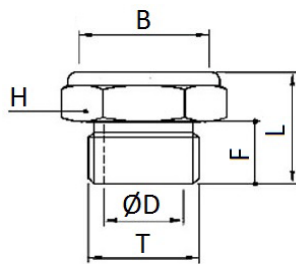
Inox AISI 316L wire silencer on inox AISI 316L base



CODE	T	ØD	B	F	L	H	GR.
6880TR18	G1/8"	6,0	10,0	8,0	15,0	14,0	8,0
6880TR14	G1/4"	8,0	12,5	8,0	15,0	17,0	12,0
6880TR38	G3/8"	12,0	17,5	10,0	18,0	22,0	20,0
6880TR12	G1/2"	15,0	21,5	12,0	22,0	27,0	38,0
6880TR34	G3/4"	20,0	28,0	15,0	27,0	32,0	62,0
6880TR1	G1"	26,0	34,0	18,0	32,0	41,0	118,0

**6882**

Inox AISI 316L wire silencer on inox AISI 316L base NPT thread



CODE	T	ØD	B	F	L	H	GR.
6882TR18	N1/8"	6,0	10,0	8,0	15,0	14,0	8,0
6882TR14	N1/4"	8,0	12,5	8,0	15,0	17,0	12,0
6882TR38	N3/8"	12,0	17,5	10,0	18,0	22,0	20,0
6882TR12	N1/2"	15,0	21,5	12,0	22,0	27,0	38,0
6882TR34	N3/4"	20,0	28,0	15,0	27,0	32,0	62,0
6882TR1	N1"	26,0	34,0	18,0	32,0	41,0	118,0