

Series 104

General

The micro valves 104 series are a cost effective solution with reduced overall dimensions, easy to install and manage. Their main characteristic is the possibility to choose between the version with lateral or rear pneumatic connections realized with quick fitting for Ø4mm tube included.

The valves are available with 2 or 3 ways versions, normally closed or open, 5 ways and 5 ways 3 positions open centres and pressured centres.

The 5 ways version is made with two 3 ways valves placed side by side with common inlet.

The operators available for this valve are push button (different versions), selector (key, short and long lever), lever (lever roller or level unidirectional) and pneumatic.

It is also possible to combine the 2 and 3 ways valves with electrical switches, normally closed or open.

Construction characteristics

Body and cover	Technopolymer
Operators	Plastic material for buttons and switches
Seals	NBR
Spacer	Technopolymer
Spools	Steel
Springs	Spring steel
Pistons	Aluminium (for pneumatic command version)

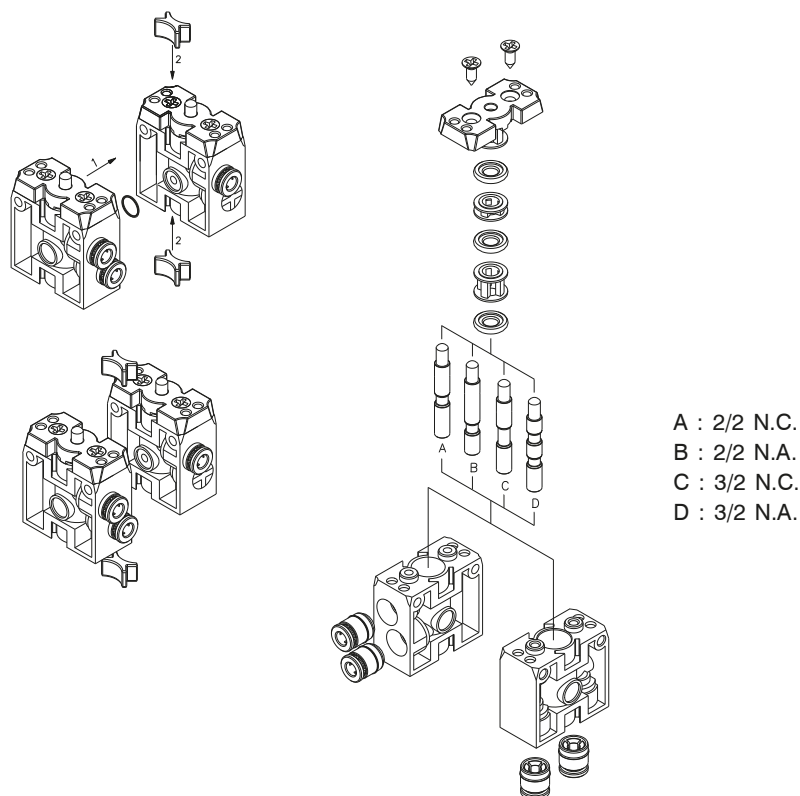
Use and maintenance

This valves have an average life of 15 million cycles depending on the application and air quality.

Filtered and lubricated air using specified lubricants will reduce the wear of the seals and ensures long and trouble free operation.

Please ensure that the valve is being used according with the manufacturers specification, such as air pressure and temperature.

ATTENTION: use hydraulic oil class H for lubrication such as MAGNA GC 32 (Castrol).



Tappet - Spring

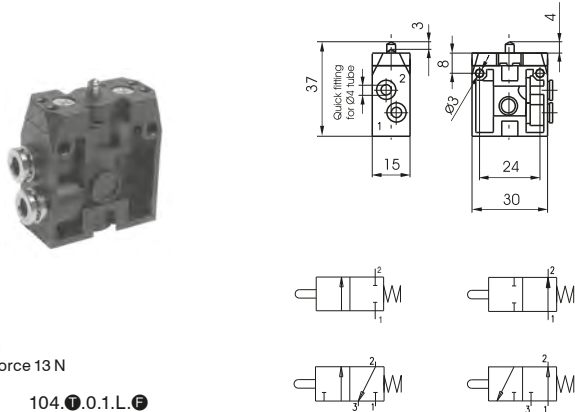
Coding: 104.●.0.1.●.●.●

Operational characteristics

Fluid	Filtered air. No lubrication needed, if applied it shall be continuous
Max working pressure (bar)	10
Temperature °C	-5 ÷ +70
Flow rate at 6 bar with Δp=1 (NI/min)	90
Orifice size (mm)	2.5
Working ports size	ø4 tube

TYPE	FUNCTION
● 22 = 2 ways	● A = Normally Open
● 32 = 3 ways	● C = Normally Closed
CONNECTION TYPE	
● L = Lateral	
● P = Rear	

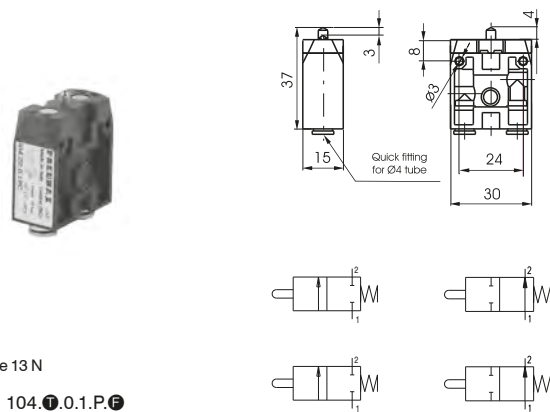
2/2 - 3/2 - Lateral connections



Weight 20 g
Operating force 13 N

104.●.0.1.L.●

2/2 - 3/2 - Rear connections



Weight 20 g
Operating force 13 N

104.●.0.1.P.●

Push button - Spring

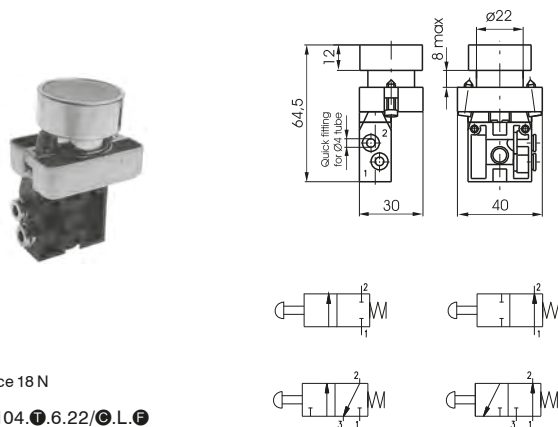
Coding: 104.●.6.22/●.●.●.●

Operational characteristics

Fluid	Filtered air. No lubrication needed, if applied it shall be continuous
Max working pressure (bar)	10
Temperature °C	-5 ÷ +70
Flow rate at 6 bar with Δp=1 (NI/min)	90
Orifice size (mm)	2.5
Working ports size	ø4 tube

TYPE	CONNECTION TYPE
● 22 = 2 ways	● L = Lateral
● 32 = 3 ways	● P = Rear
● 52 = 5 ways	FUNCTION (only for 2 or 3 ways)
BUTTON COLOR	● A = Normally Open
● 1 = Red	● C = Normally Closed
● 2 = Black	
● 3 = Green	
● 4 = Yellow	

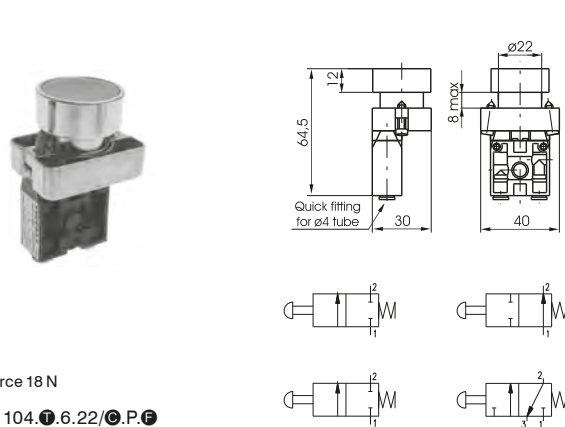
2/2 - 3/2 - Lateral connections



Weight 50 g
Operating force 18 N

104.●.6.22/●.L.●

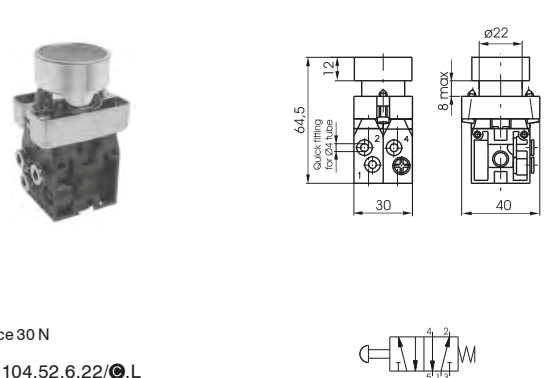
2/2 - 3/2 - Rear connections



Weight 50 g
Operating force 18 N

104.●.6.22/●.P.●

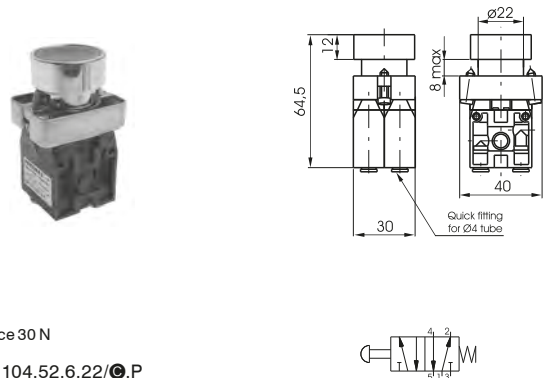
5/2 - Lateral connections



Weight 105 g
Operating force 30 N

104.52.6.22/●.L

5/2 - Rear connections



Weight 105 g
Operating force 30 N

104.52.6.22/●.P

Push button 2 positions (step - step)

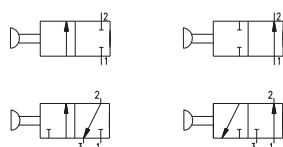
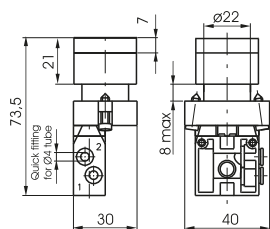
Coding: 104. **T**.6.31. **W**. **F**

Operational characteristics	
Fluid	Filtered air. No lubrication needed, if applied it shall be continuous
Max working pressure (bar)	10
Temperature °C	-5 ÷ +70
Flow rate at 6 bar with $\Delta p=1$ (Nl/min)	90
Orifice size (mm)	2.5
Working ports size	$\varnothing 4$ tube

T	TYPE
	22 = 2 ways
	32 = 3 ways
W	CONNECTION TYPE
	L = Lateral
	P = Rear

F	FUNCTION (only for 2/2 and 3/2 ways)
	A = Normally Open
	C = Normally Closed

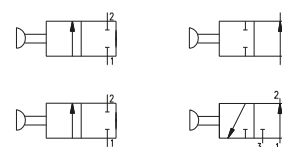
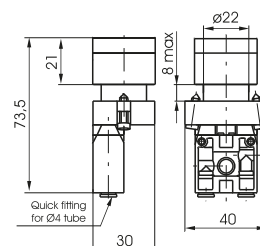
2/2 - 3/2 - Lateral connections



Weight 60 g
Operating force 18 N

104. **T**.6.31. **L**. **F**

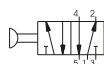
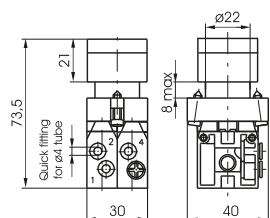
2/2 - 3/2 - Rear connections



Weight 60 g
Operating force 18 N

104. **T**.6.31. **P**. **F**

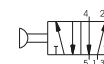
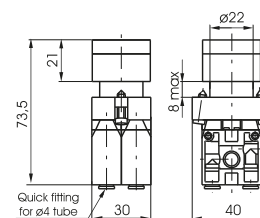
5/2 - Lateral connections



Weight 110 g
Operating force 30 N

104.52.6.31.L

5/2 - Rear connections



Weight 110 g
Operating force 30 N

104.52.6.31.P



1 Raised Push button - Spring

Coding: 104. **T**.6.23/**C.W.F**

Operational characteristics

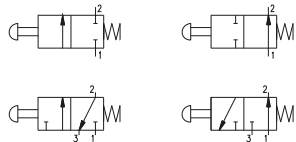
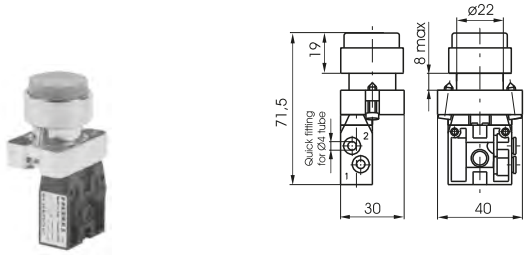
Fluid	Filtered air. No lubrication needed, if applied it shall be continuous
Max working pressure (bar)	10
Temperature °C	-5 ÷ +70
Flow rate at 6 bar with Δp=1 (Nl/min)	90
Orifice size (mm)	2.5
Working ports size	ø4 tube

T	TYPE
	22 = 2 ways
	32 = 3 ways
C	52 = 5 ways
	BUTTON COLOR
	1 = Red
	2 = Black
	3 = Green
	4 = Yellow

W	CONNECTION TYPE
	L = Lateral
	P = Rear
F	FUNCTION (only for 2 or 3 ways)
	A = Normally Open
	C = Normally Closed

AIR DISTRIBUTION

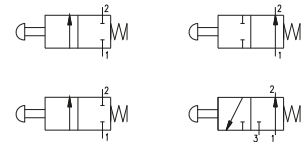
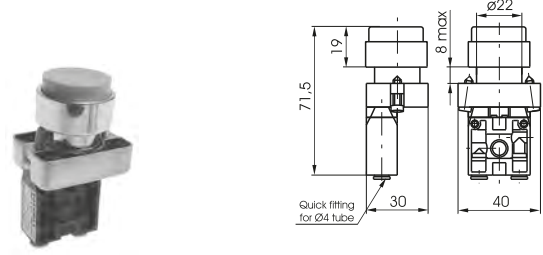
2/2 - 3/2 - Lateral connections



Weight 50 g
 Operating force 18 N

104. **T**.6.23/**C.L.F**

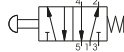
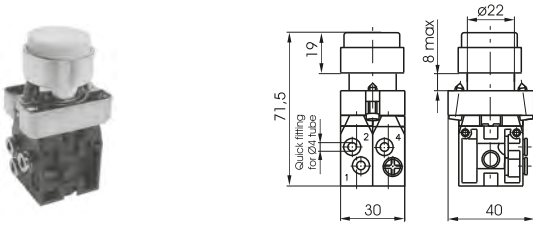
2/2 - 3/2 - Rear connections



Weight 50 g
 Operating force 18 N

104. **T**.6.23/**C.P.F**

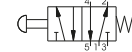
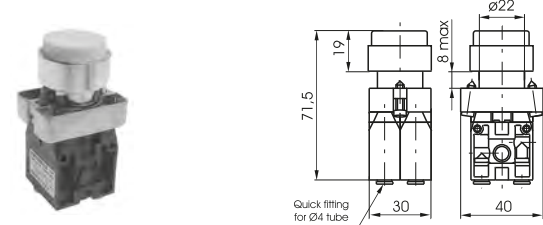
5/2 - Lateral connections



Weight 105 g
 Operating force 30 N

104.52.6.23/**C.L**

5/2 - Rear connections



Weight 105 g
 Operating force 30 N

104.52.6.23/**C.P**

Palm button 2 position

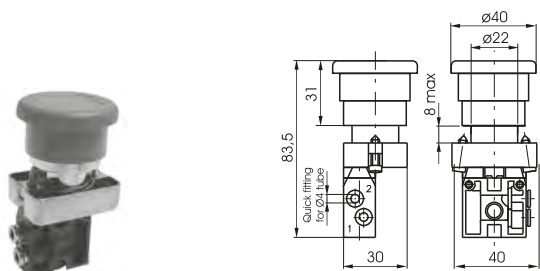
Coding: 104. **T**.6.25. **W**. **F**

Operational characteristics	
Fluid	Filtered air. No lubrication needed, if applied it shall be continuous
Max working pressure (bar)	10
Temperature °C	-5 ÷ +70
Flow rate at 6 bar with $\Delta p=1$ (l/min)	90
Orifice size (mm)	2.5
Working ports size	ø4 tube

T	TYPE
	22 = 2 ways
	32 = 3 ways
W	CONNECTION TYPE
	L = Lateral
	P = Rear

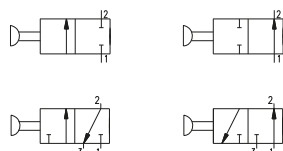
F	FUNCTION (only for 2/2 and 3/2 ways)
	A = Normally Open
	C = Normally Closed

2/2 - 3/2 - Lateral connections

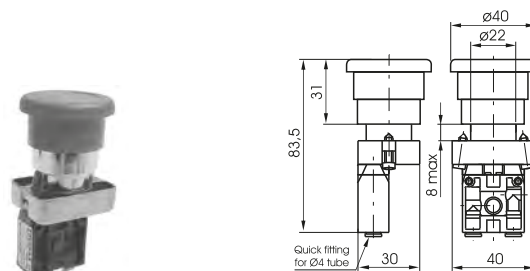


Weight 65 g
Operating force 19 N
Emergency - Rotate to unlock

104. **T**.6.25. **L**. **F**

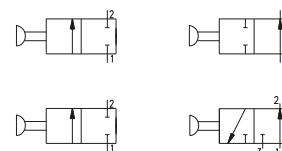


2/2 - 3/2 - Rear connections

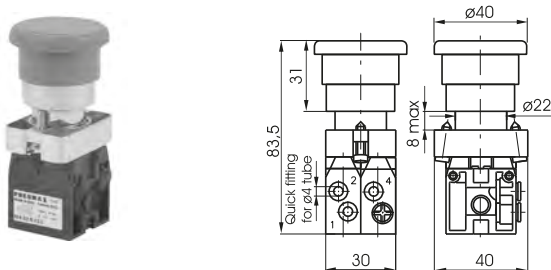


Weight 65 g
Operating force 19 N
Emergency - Rotate to unlock

104. **T**.6.25. **P**. **F**

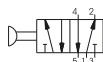


5/2 - Lateral connections

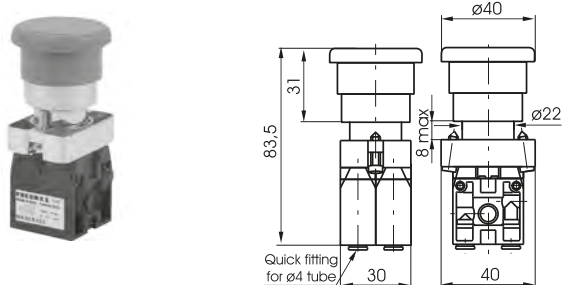


Weight 120 g
Operating force 32 N
Emergency - Rotate to unlock

104.52.6.25. **L**

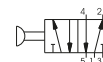


5/2 - Rear connections



Weight 120 g
Operating force 32 N
Emergency - Rotate to unlock

104.52.6.25. **P**



1

AIR DISTRIBUTION

Switch - short lever

Coding: 104. **T**. **F**. 1.6.30. **S**. **W**. **F**2

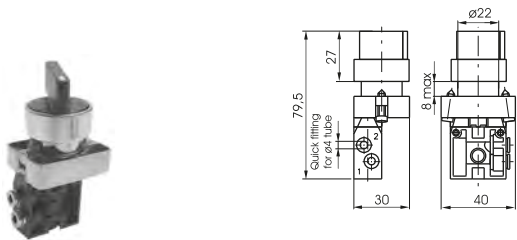
Operational characteristics

Fluid	Filtered air. No lubrication needed, if applied it shall be continuous
Max working pressure (bar)	10
Temperature °C	-5 ÷ +70
Flow rate at 6 bar with Δp=1 (NI/min)	90
Orifice size (mm)	2.5
Working ports size	ø4 tube

T	TYPE	S	SWITCH POSITION (only for 2/2 and 3/2 ways)
	22 = 2 ways		0 = 3 pos. instable
	32 = 3 ways		1 = 3 pos. stable
	52 = 5 ways		
F 1	FUNCTION (only for 5/3 ways)	W	CONNECTION TYPE
	32 = Open centres		L = Lateral
	33 = Pressured centres		P = Rear
		F 2	FUNCTION (only for 2/2 or 3/2 ways)
			A = Normally Open
			C = Normally Closed

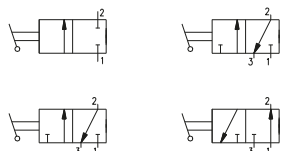
1
AIR DISTRIBUTION

2/2 - 3/2 - Lateral connections

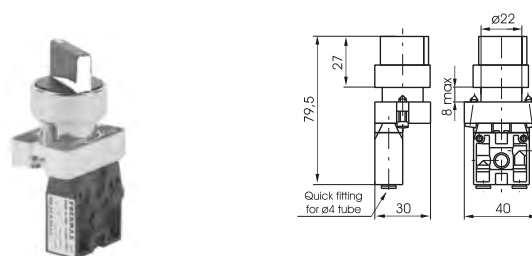


Weight 65 g
Switch 2 positions stable

104. **T**. **F**. 6.30. **L**. **F**

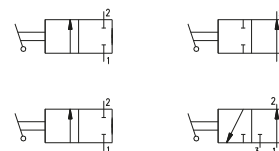


2/2 - 3/2 - Rear connections

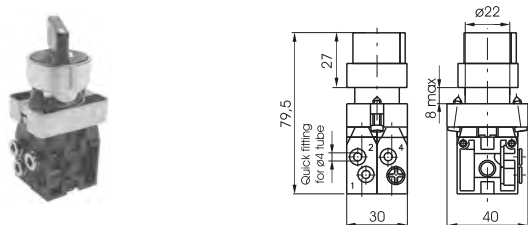


Weight 65 g
Switch 2 positions stable

104. **T**. 6.30. **P**. **F**

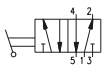


5/2 - Lateral connections

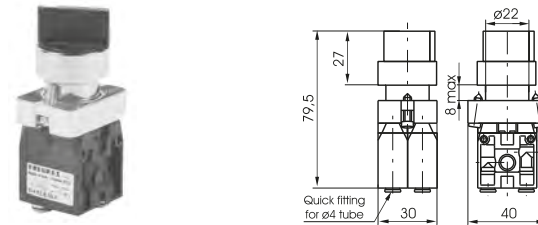


Weight 120 g
Switch 2 positions stable

104.52.6.30.L

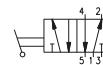


5/2 - Rear connections

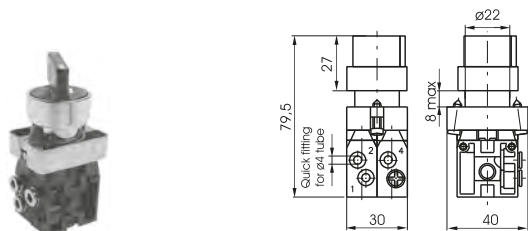


Weight 120 g
Switch 2 positions stable

104.52.6.30.P

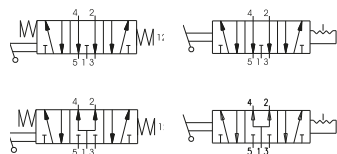


5/3 - Lateral connections

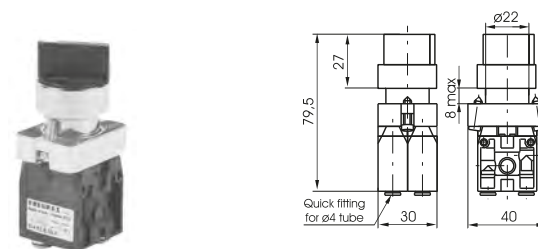


Weight 120 g

104.53. **F**. 6.30. **S**. **L**

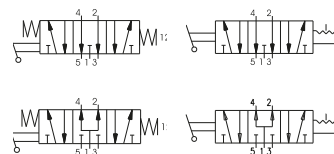


5/3 - Rear connections



Weight 120 g

104.53. **F**. 6.30. **S**. **P**



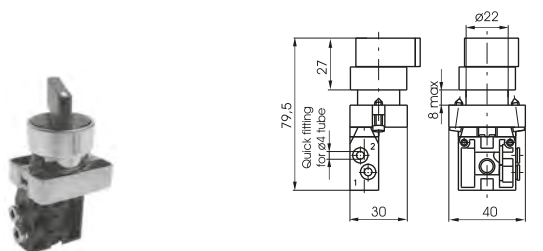
Switch - long lever

Coding: 104. **T**. **F**1.6.27. **S**. **W**. **F**2

Operational characteristics	
Fluid	Filtered air. No lubrication needed, if applied it shall be continuous
Max working pressure (bar)	10
Temperature °C	-5 ÷ +70
Flow rate at 6 bar with Δp=1 (Nl/min)	90
Orifice size (mm)	2.5
Working ports size	ø4 tube

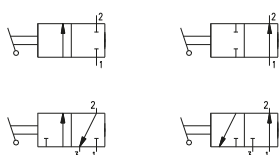
T	TYPE	S	SWITCH POSITION (only for 2/2 and 3/2 ways)
	22 = 2 ways		0 = 3 pos. instable
	32 = 3 ways		1 = 3 pos. stable
	52 = 5 ways		CONNECTION TYPE
53 = 5 ways	W		L = Lateral
F 1	FUNCTION (only for 5/3 ways)	P = Rear	FUNCTION (only for 2/2 or 3/2 ways)
	32 = Open centres	F 2	A = Normally Open
	33 = Pressured centres		C = Normally Closed

2/2 - 3/2 - Lateral connections

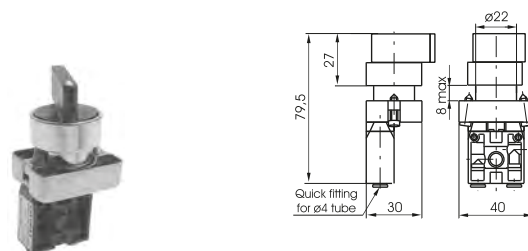


Weight 65 g
Switch 2 positions stable

104. **T**. **F**1.6.27. **L**. **F**

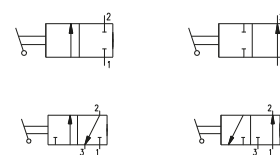


2/2 - 3/2 - Rear connections

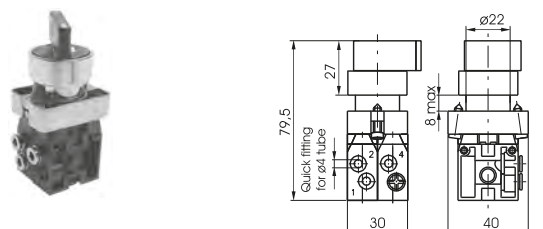


Weight 65 g
Switch 2 positions stable

104. **T**. **F**1.6.27. **P**. **F**

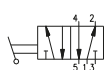


5/2 - Lateral connections

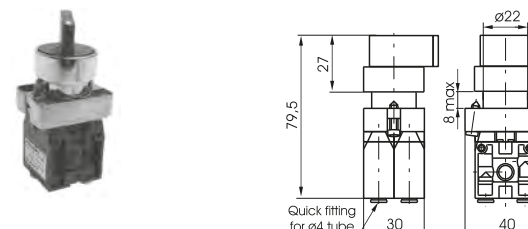


Weight 120 g
Switch 2 positions stable

104.52.6.27.L

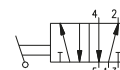


5/2 - Rear connections

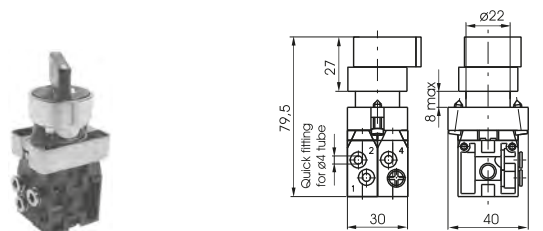


Weight 120 g
Switch 2 positions stable

104.52.6.27.P

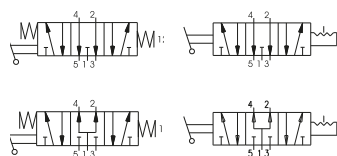


5/3 - Lateral connections

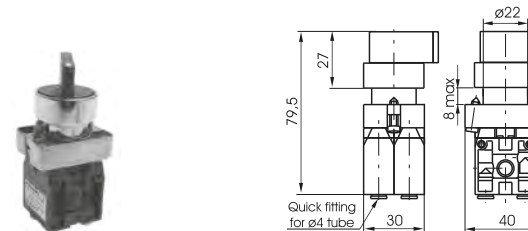


Weight 120 g

104.53. **F**1.6.27. **S**. **L**

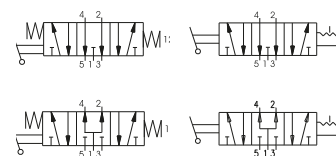


5/3 - Rear connections



Weight 120 g

104.53. **F**1.6.27. **S**. **P**



Key switch

Coding: 104. **T**. **F**1.6.28. **S**. **W**. **F**2

Operational characteristics

Fluid	Filtered air. No lubrication needed, if applied it shall be continuous
Max working pressure (bar)	10
Temperature °C	-5 ÷ +70
Flow rate at 6 bar with Δp=1 (NI/min)	90
Orifice size (mm)	2.5
Working ports size	ø4 tube

T	TYPE	SWITCH POSITION (only for 2/2 and 3/2 ways)
	22 = 2 ways	0 = 3 pos. instable
	32 = 3 ways	1 = 3 pos. stable
	52 = 5 ways	
F1	FUNCTION 1 (only for 5/3 ways)	CONNECTION TYPE
	32 = Open centres	L = Lateral
	33 = Pressured centres	P = Rear
F2	FUNCTION 2 (only for 2/2 or 3/2 ways)	A = Normally Open
		C = Normally Closed

1

AIR DISTRIBUTION

2/2 - 3/2 - Lateral connections

Weight 100 g
 Switch 2 positions stable
 104. **T**.6.28.L. **F**

2/2 - 3/2 - Rear connections

Weight 100 g
 Switch 2 positions stable
 104. **T**.6.28.P. **F**

5/2 - Lateral connections

Weight 155 g
 Switch 2 positions stable
 104.52.6.28.L

5/2 - Rear connections

Weight 155 g
 Switch 2 positions stable
 104.52.6.28.P

5/3 - Lateral connections

Weight 155 g
 104.53. **F**.6.28. **S**.L

5/3 - Rear connections

Weight 155 g
 104.53. **F**.6.28. **S**.P

Lever roller - Spring

Coding: 104. **T**.2.1. **W**. **F**

Operational characteristics	
Fluid	Filtered air. No lubrication needed, if applied it shall be continuous
Max working pressure (bar)	10
Temperature °C	-5 ÷ +70
Flow rate at 6 bar with Δp=1 (NI/min)	90
Orifice size (mm)	2.5
Working ports size	ø4 tube

T	TYPE
	22 = 2 ways 32 = 3 ways
W	CONNECTION TYPE
	L = Lateral
	P = Rear

F	FUNCTION
	A = Normally Open
	C = Normally Closed

2/2 - 3/2 - Lateral connections

Weight 31 g
Operating force 9 N

104. **T**.2.1.L. **F**

2/2 - 3/2 - Rear connections

Weight 31 g
Operating force 9 N

104. **T**.2.1.P. **F**

Lever roller ball bearing - Spring

Coding: 104. **T**.2.1/1. **W**. **F**

Operational characteristics	
Fluid	Filtered air. No lubrication needed, if applied it shall be continuous
Max working pressure (bar)	10
Temperature °C	-5 ÷ +70
Flow rate at 6 bar with Δp=1 (NI/min)	90
Orifice size (mm)	2.5
Working ports size	ø4 tube

T	TYPE
	22 = 2 ways 32 = 3 ways
W	CONNECTION TYPE
	L = Lateral
	P = Rear

F	FUNCTION
	A = Normally Open
	C = Normally Closed

2/2 - 3/2 - Lateral connections

Weight 46 g
Operating force 9 N

104. **T**.2.1/1.L. **F**

2/2 - 3/2 - Rear connections

Weight 46 g
Operating force 9 N

104. **T**.2.1/1.P. **F**

Lever unidirectional - Spring

Coding: 104. **T**.3.1. **W**. **F**

Operational characteristics	
Fluid	Filtered air. No lubrication needed, if applied it shall be continuous
Max working pressure (bar)	10
Temperature °C	-5 ÷ +70
Flow rate at 6 bar with Δp=1 (NI/min)	90
Orifice size (mm)	2.5
Working ports size	ø4 tube

T	TYPE
	22 = 2 ways 32 = 3 ways
W	CONNECTION TYPE
	L = Lateral
	P = Rear

F	FUNCTION
	A = Normally Open
	C = Normally Closed

2/2 - 3/2 - Lateral connections

Weight 31 g
Operating force 9 N

104. **T**.3.1.L. **F**

2/2 - 3/2 - Rear connections

Weight 31 g
Operating force 9 N

104. **T**.3.1.P. **F**

1
AIR DISTRIBUTION

▶ Complete lever roller operator

Coding: 104.2.1



▶ Complete lever unidirectional

Coding: 104.3.1



▶ Push button

Coding: 104.6.22/ⓐ



BUTTON COLOR	
ⓐ	1 = Red
	2 = Black
	3 = Green
	4 = Yellow

▶ Push button 2 positions

Coding: 104.6.31

(step - step)



▶ Switch - short lever

Coding: 104.6.30.Ⓢ



SWITCH POSITION (only for 3 position)	
Ⓢ	0 = 3 pos. instable
	1 = 3 pos. stable

Switch 2 positions stable 104.6.30
Switch 3 positions 104.6.30.Ⓢ

▶ Key switch

Coding: 104.6.28.Ⓢ



SWITCH POSITION (only for 3 position)	
Ⓢ	0 = 3 pos. instable
	1 = 3 pos. stable

Switch 2 positions stable 104.6.28
Switch 3 positions 104.6.28.Ⓢ

▶ Contact electric element

Coding: 104.Ⓕ



FUNCTION	
Ⓕ	NO = Normally Open
	NC = Normally Closed

▶ Push button protection cover

Coding: 104.02



▶ Complete lever roller ball bearing operator

Coding: 104.2.1/1



▶ Fixing plate

Coding: 104.00



▶ Raised Push button

Coding: 104.6.23/ⓐ



BUTTON COLOR	
ⓐ	1 = Red
	2 = Black
	3 = Green
	4 = Yellow

▶ Palm button 2 position

Coding: 104.6.25

Emergency - Rotate to unlock



▶ Switch - long lever

Coding: 104.6.27.Ⓢ



SWITCH POSITION (only for 3 position)	
Ⓢ	0 = 3 pos. instable
	1 = 3 pos. stable

Switch 2 positions stable 104.6.27
Switch 3 positions 104.6.27.Ⓢ

▶ Joystick selector switch

Coding: 104.6.39.Ⓢ



▶ Complete Pneumatic Operator

Coding: 104.11



Series 105

General

The series 105 consist of a broad range of miniature valves and valves with various type of actuation.
 The connections are M5 for this series
 Due to their special construction with a balanced spool, these valves can be used interchangeably as 3 ways or 5 ways.
 The 3 ways can be used normally closed or normally open and the 5 ways can be fed through the exhausts 3 and 5 with different pressures according to the need.
 The spool, as it is moving, isolates the connections without being affected by the inlet pressure.

Construction characteristics

	M5
Body	Aluminium
Operators	Nickel plated brass Stainless steel for roller levers and button levers; Zinc plated steel for side levers; Plastic material for handles, buttons and switches Aluminium (for pneumatic command version)
Seals	NBR
Spacer	Technopolymer
Spools	Steel
Springs	Spring steel
Pistons	Aluminium (for pneumatic command version)

Use and maintenance

This valves have an average life of 15 million cycles depending on the application and air quality.
 Filtered and lubricated air using specified lubricants will reduce the wear of the seals and ensures long and trouble free operation.
 Please ensure that the valve is being used according with the manufacturers specification, such as air pressure and temperature.
 The exhaust port of the distributor has to be protected in a dusty and dirty environment.
 Repair kits including the spool complete with seals are available for overhauling the valves.
 However, although this is a simple operation it should be carried out by a competent person.

ATTENTION: use hydraulic oil class H for lubrication such as MAGNA GC 32 (Castrol).

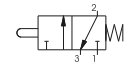
1
AIR DISTRIBUTION

Tappet panel - Spring

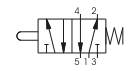
Coding: 105.1.0.1

Operational characteristics	
Fluid	Filtered air. No lubrication needed, if applied it shall be continuous
Max working pressure (bar)	10
Temperature °C	-5 ÷ +70
Flow rate at 6 bar with $\Delta p=1$ (NI/min)	120
Orifice size (mm)	2.5
Working ports size	M5

TYPE	
32	= 3 ways
52	= 5 ways



105.32.0.1

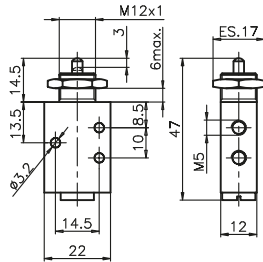


105.52.0.1

3 ways



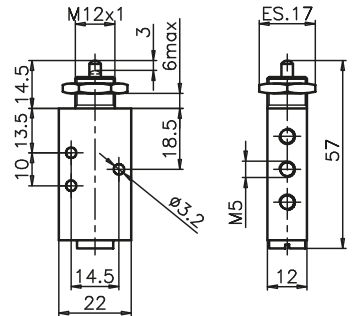
Weight 70 g
Operating force 14 N



5 ways



Weight 87 g
Operating force 14 N

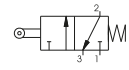


Lever roller - Spring

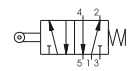
Coding: 105.1.2.1

Operational characteristics	
Fluid	Filtered air. No lubrication needed, if applied it shall be continuous
Max working pressure (bar)	10
Temperature °C	-5 ÷ +70
Flow rate at 6 bar with $\Delta p=1$ (NI/min)	120
Orifice size (mm)	2.5
Working ports size	M5

TYPE	
32	= 3 ways
52	= 5 ways



105.32.2.1

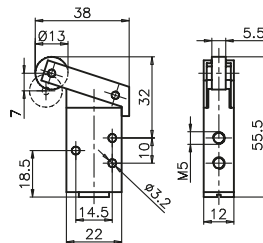


105.52.2.1

3 ways



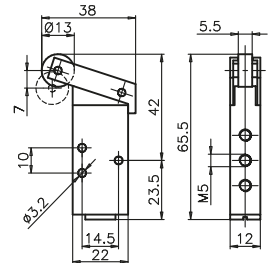
Weight 85 g
Operating force 6 N



5 ways



Weight 102 g
Operating force 6 N

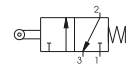


Lever roller ball bearing - Spring

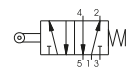
Coding: 105.1.2.1/1

Operational characteristics	
Fluid	Filtered air. No lubrication needed, if applied it shall be continuous
Max working pressure (bar)	10
Temperature °C	-5 ÷ +70
Flow rate at 6 bar with $\Delta p=1$ (NI/min)	120
Orifice size (mm)	2.5
Working ports size	M5

TYPE	
32	= 3 ways
52	= 5 ways



105.32.2.1/1

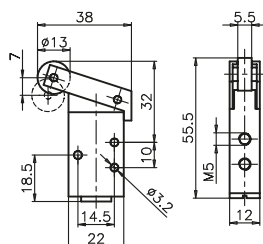


105.52.2.1/1

3 ways



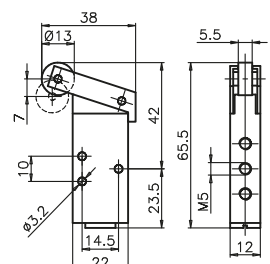
Weight 100 g
Operating force 6 N



5 ways



Weight 177 g
Operating force 6 N



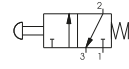
Lever button - Spring

Coding: 105.1.2.6/C

Operational characteristics

Fluid	Filtered air. No lubrication needed, if applied it shall be continuous
Max working pressure (bar)	10
Temperature °C	-5 ÷ +70
Flow rate at 6 bar with Δp=1 (NI/min)	120
Orifice size (mm)	2.5
Working ports size	M5

TYPE	32 = 3 ways 52 = 5 ways
BUTTON COLOR	1 = Red 2 = Black 3 = Green

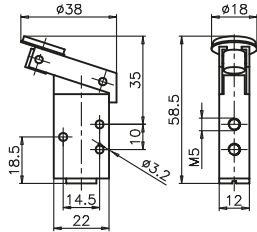


105.32.2.6/C



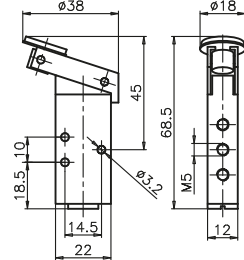
105.52.2.6/C

3 ways



Weight 85 g
Operating force 6 N

5 ways



Weight 102 g
Operating force 6 N

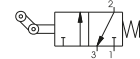
Lever unidirectional - Spring

Coding: 105.1.3.1

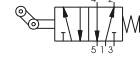
Operational characteristics

Fluid	Filtered air. No lubrication needed, if applied it shall be continuous
Max working pressure (bar)	10
Temperature °C	-5 ÷ +70
Flow rate at 6 bar with Δp=1 (NI/min)	120
Orifice size (mm)	2.5
Working ports size	M5

TYPE	32 = 3 ways 52 = 5 ways
------	----------------------------

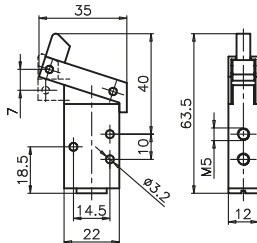


105.32.3.1



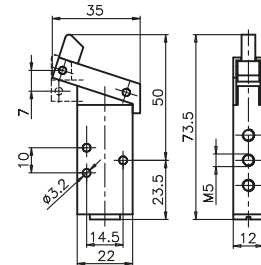
105.52.3.1

3 ways



Weight 85 g
Operating force 6 N

5 ways



Weight 102 g
Operating force 6 N

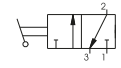
Lever panel Ø22 - 2 positions

Coding: 105.1.4/C

Operational characteristics

Fluid	Filtered air. No lubrication needed, if applied it shall be continuous
Max working pressure (bar)	10
Temperature °C	-5 ÷ +70
Flow rate at 6 bar with Δp=1 (NI/min)	120
Orifice size (mm)	2.5
Working ports size	M5

TYPE	32 = 3 ways 52 = 5 ways
LEVER COLOR	1 = Red 2 = Black 3 = Green

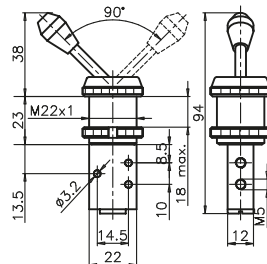


105.32.4/C



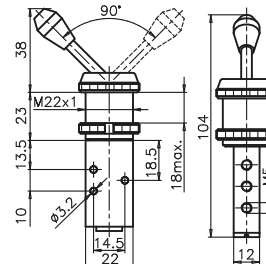
105.52.4/C

3 ways



Weight 125 g

5 ways



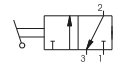
Weight 142 g

Lever panel Ø30 - 2 positions

Coding: 105.1.5/C

Operational characteristics	
Fluid	Filtered air. No lubrication needed, if applied it shall be continuous
Max working pressure (bar)	10
Temperature °C	-5 ÷ +70
Flow rate at 6 bar with Δp=1 (NI/min)	120
Orifice size (mm)	2.5
Working ports size	M5

T	TYPE
	32 = 3 ways 52 = 5 ways
C	LEVER COLOR
	1 = Red 2 = Black 3 = Green



105.32.5/C

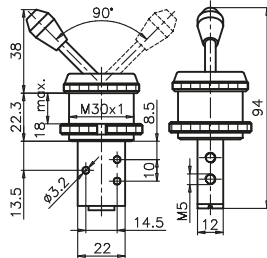


105.52.5/C

3 ways



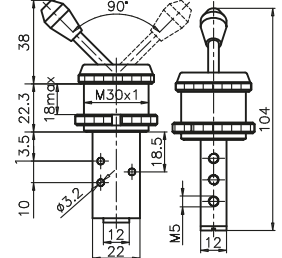
Weight 165 g



5 ways



Weight 182 g

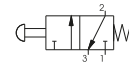


Push button Ø30 - Spring

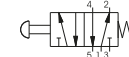
Coding: 105.1.6.1/C

Operational characteristics	
Fluid	Filtered air. No lubrication needed, if applied it shall be continuous
Max working pressure (bar)	10
Temperature °C	-5 ÷ +70
Flow rate at 6 bar with Δp=1 (NI/min)	120
Orifice size (mm)	2.5
Working ports size	M5

T	TYPE
	32 = 3 ways 52 = 5 ways
C	BUTTON COLOR
	1 = Red 2 = Black 3 = Green



105.32.6.1/C

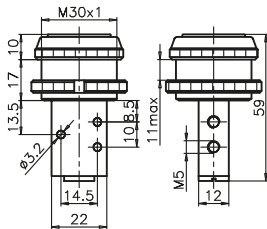


105.52.6.1/C

3 ways



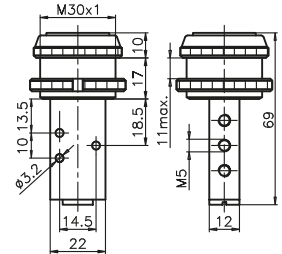
Weight 123 g
Operating force 14 N



5 ways



Weight 140 g
Operating force 14 N

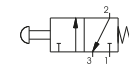


Push button Ø22 - Spring

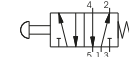
Coding: 105.1.6.2/C

Operational characteristics	
Fluid	Filtered air. No lubrication needed, if applied it shall be continuous
Max working pressure (bar)	10
Temperature °C	-5 ÷ +70
Flow rate at 6 bar with Δp=1 (NI/min)	120
Orifice size (mm)	2.5
Working ports size	M5

T	TYPE
	32 = 3 ways 52 = 5 ways
C	BUTTON COLOR
	1 = Red 2 = Black 3 = Green



105.32.6.2/C

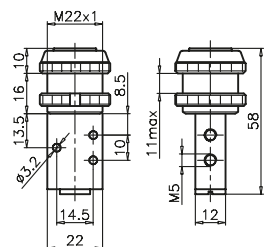


105.52.6.2/C

3 ways



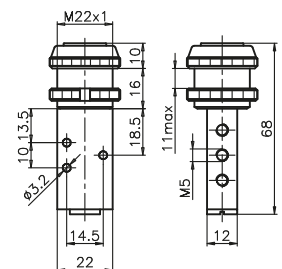
Weight 102 g
Operating force 14 N



5 ways



Weight 119 g
Operating force 14 N



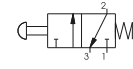
Push button - Spring

Coding: 105.1.6.22/©

Operational characteristics

Fluid	Filtered air. No lubrication needed, if applied it shall be continuous
Max working pressure (bar)	10
Temperature °C	-5 ÷ +70
Flow rate at 6 bar with Δp=1 (NI/min)	120
Orifice size (mm)	2.5
Working ports size	M5

TYPE	32 = 3 ways 52 = 5 ways
BUTTON COLOR	1 = Red 2 = Black 3 = Green 4 = Yellow

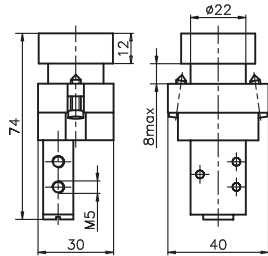


105.32.6.22/©



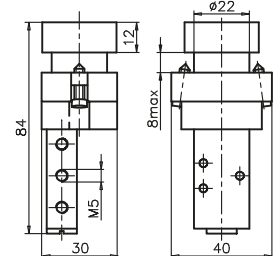
105.52.6.22/©

3 ways



Weight 165 g
Operating force 14 N

5 ways



Weight 182 g
Operating force 14 N

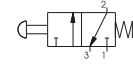
Raised Push button - Spring

Coding: 105.1.6.23/©

Operational characteristics

Fluid	Filtered air. No lubrication needed, if applied it shall be continuous
Max working pressure (bar)	10
Temperature °C	-5 ÷ +70
Flow rate at 6 bar with Δp=1 (NI/min)	120
Orifice size (mm)	2.5
Working ports size	M5

TYPE	32 = 3 ways 52 = 5 ways
BUTTON COLOR	1 = Red 2 = Black 3 = Green 4 = Yellow

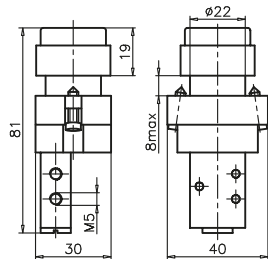


105.32.6.23/©



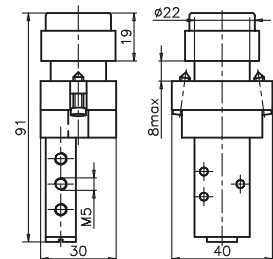
105.52.6.23/©

3 ways



Weight 170 g
Operating force 14 N

5 ways



Weight 187 g
Operating force 14 N

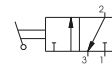
Switch 2 positions

Coding: 105.1.6.27

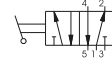
Operational characteristics

Fluid	Filtered air. No lubrication needed, if applied it shall be continuous
Max working pressure (bar)	10
Temperature °C	-5 ÷ +70
Flow rate at 6 bar with Δp=1 (NI/min)	120
Orifice size (mm)	2.5
Working ports size	M5

TYPE	32 = 3 ways 52 = 5 ways
------	----------------------------

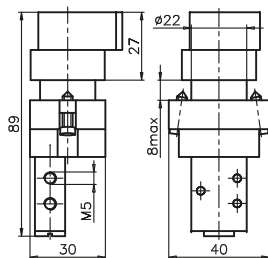


105.32.6.27



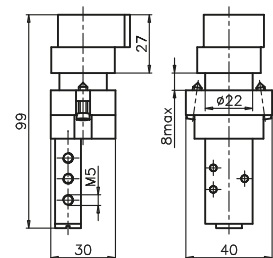
105.52.6.27

3 ways



Weight 185 g

5 ways



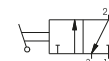
Weight 202 g

Key switch 2 positions

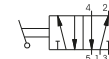
Coding: 105.1.6.28

Operational characteristics	
Fluid	Filtered air. No lubrication needed, if applied it shall be continuous
Max working pressure (bar)	10
Temperature °C	-5 ÷ +70
Flow rate at 6 bar with $\Delta p=1$ (NI/min)	120
Orifice size (mm)	2.5
Working ports size	M5

T	TYPE
	32 = 3 ways
	52 = 5 ways



105.32.6.28

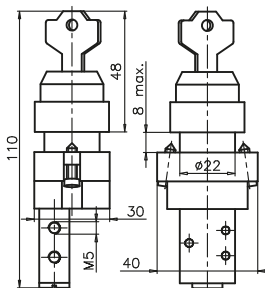


105.52.6.28

3 ways



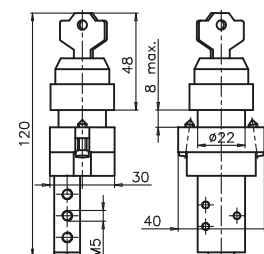
Weight 215 g



5 ways



Weight 232 g

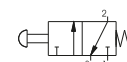


Palm pushbutton Ø30 - Spring

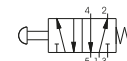
Coding: 105.1.7.1/C

Operational characteristics	
Fluid	Filtered air. No lubrication needed, if applied it shall be continuous
Max working pressure (bar)	10
Temperature °C	-5 ÷ +70
Flow rate at 6 bar with $\Delta p=1$ (NI/min)	120
Orifice size (mm)	2.5
Working ports size	M5

T	TYPE
	32 = 3 ways
	52 = 5 ways
C	BUTTON COLOR
	1 = Red
	2 = Black
	3 = Green



105.32.7.1/C

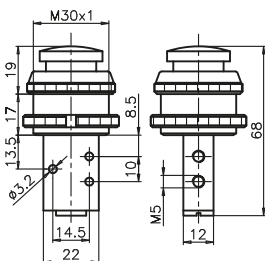


105.52.7.1/C

3 ways



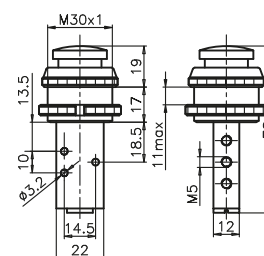
Weight 126 g
Operating force 14 N



5 ways



Weight 143 g
Operating force 14 N

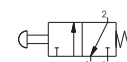


Palm pushbutton Ø22 - Spring

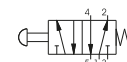
Coding: 105.1.7.2/C

Operational characteristics	
Fluid	Filtered air. No lubrication needed, if applied it shall be continuous
Max working pressure (bar)	10
Temperature °C	-5 ÷ +70
Flow rate at 6 bar with $\Delta p=1$ (NI/min)	120
Orifice size (mm)	2.5
Working ports size	M5

T	TYPE
	32 = 3 ways
	52 = 5 ways
C	BUTTON COLOR
	1 = Red
	2 = Black
	3 = Green



105.32.7.2/C

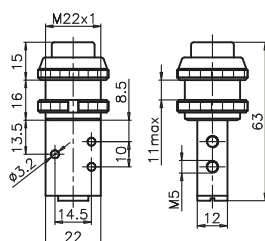


105.52.7.2/C

3 ways



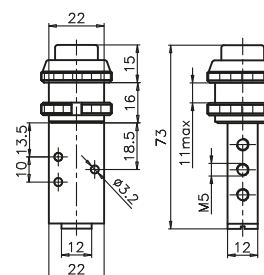
Weight 103 g
Operating force 14 N



5 ways



Weight 120 g
Operating force 14 N



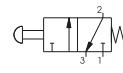
Push button

Coding: 105.1.8.1/C

Operational characteristics

Fluid	Filtered air. No lubrication needed, if applied it shall be continuous
Max working pressure (bar)	10
Temperature °C	-5 ÷ +70
Flow rate at 6 bar with Δp=1 (NI/min)	120
Orifice size (mm)	2.5
Working ports size	M5

TYPE	32 = 3 ways 52 = 5 ways
BUTTON COLOR	1 = Red 2 = Black 3 = Green

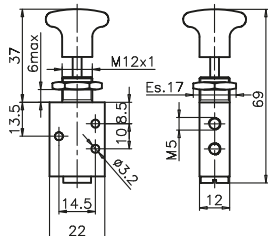


105.32.8.1/C



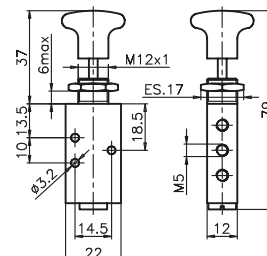
105.52.8.1/C

3 ways



Weight 75 g
Operating force 14 N

5 ways



Weight 92 g
Operating force 14 N

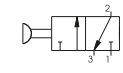
Push button 2 positions

Coding: 105.1.8/C

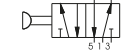
Operational characteristics

Fluid	Filtered air. No lubrication needed, if applied it shall be continuous
Max working pressure (bar)	10
Temperature °C	-5 ÷ +70
Flow rate at 6 bar with Δp=1 (NI/min)	120
Orifice size (mm)	2.5
Working ports size	M5

TYPE	32 = 3 ways 52 = 5 ways
BUTTON COLOR	1 = Red 2 = Black 3 = Green

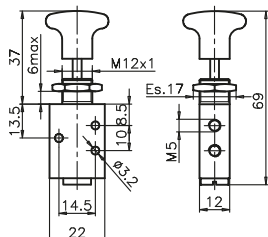


105.32.8/C



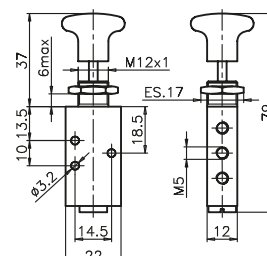
105.52.8/C

3 ways



Weight 75 g
Operating force 14 N

5 ways



Weight 92 g
Operating force 14 N

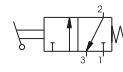
Whisker - Spring

Coding: 105.1.9.1

Operational characteristics

Fluid	Filtered air. No lubrication needed, if applied it shall be continuous
Max working pressure (bar)	10
Temperature °C	-5 ÷ +70
Flow rate at 6 bar with Δp=1 (NI/min)	120
Orifice size (mm)	2.5
Working ports size	M5

TYPE	32 = 3 ways 52 = 5 ways
------	----------------------------

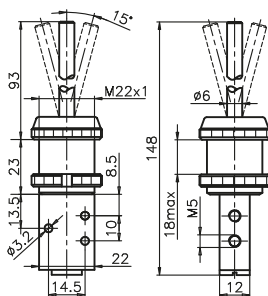


105.32.9.1



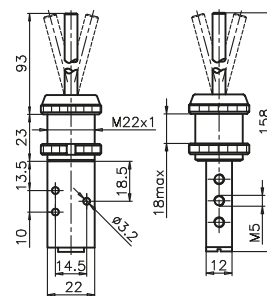
105.52.9.1

3 ways



Weight 136 g

5 ways



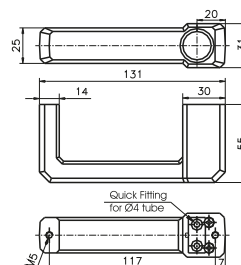
Weight 153 g

Handle with valve

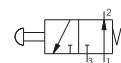
Coding: 105.T.6.A.F

Operational characteristics	
Fluid	Filtered air. No lubrication needed, if applied it shall be continuous
Max working pressure (bar)	10
Temperature °C	-5 ÷ +70
Flow rate at 6 bar with Δp=1 (Nl/min)	120
Orifice size (mm)	2.5
Working ports size	M5 - Quick Fitting for Ø4 tube

T	TYPE	F	FUNCTION (only for 3 ways)
	32 = 3 ways		A = Normally Open
A	52 = 5 ways	F	C = Normally Closed
	FEEDING		
	40 = Left feeding		40D = Right feeding

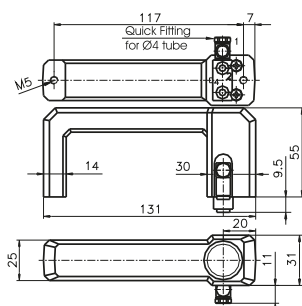


Weight 165 g
Operating force 14 N

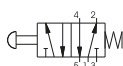


105.32.6.40.Ⓢ

Left feeding

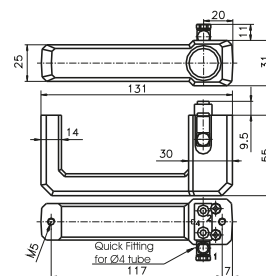


Weight 190 g
Operating force 14 N

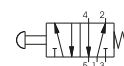


105.52.6.40

Right feeding



Weight 190 g
Operating force 14 N



105.52.6.40.Ⓢ