



# RIV-TI® blind rivet nuts

Round body, knurled

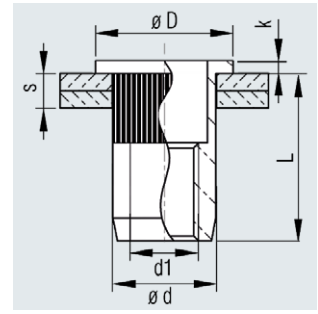
Flat head, open end

Material



Aluminium

Article also available with small countersunk head  
subject to minimum order volumes being met.



Thread	Grip range s [mm]	Hole $\varnothing$ +0.1 [mm]	Shank $\varnothing$ d +0/-0.15 [mm]	Head $\varnothing$ D $\pm 0.3$ [mm]	Head height k $\pm 0.1$ [mm]	Shank length L $\pm 0.3$ [mm]	Article No.
M 4	0.8 - 2.5	6.0	6.0	9.0	0.8	10.5	336 354 003
	2.5 - 3.5	6.0	6.0	9.0	0.8	11.5	336 454 003
M 5	0.8 - 2.5	7.0	7.0	10.0	1.0	11.5	336 555 003
	2.5 - 3.5	7.0	7.0	10.0	1.0	12.5	336 556 003
M 6	1.0 - 2.5	9.0	9.0	12.5	1.5	13.5	336 635 003
	2.5 - 4.0	9.0	9.0	12.5	1.5	15.0	336 636 003
M 8	1.0 - 2.5	11.0	11.0	14.5	1.5	15.0	336 787 003
	2.5 - 4.0	11.0	11.0	14.5	1.5	16.5	336 788 003
M 10	1.0 - 2.5	13.0	13.0	16.5	1.5	15.5	336 904 003
	2.5 - 4.0	13.0	13.0	16.5	1.5	17.0	336 905 003

Other designs available on request.



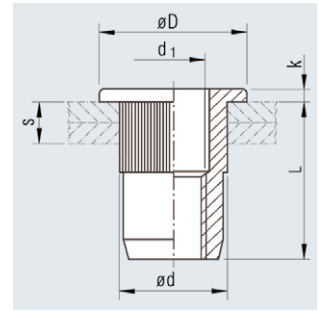
# RIV-TI® blind rivet nuts

Round body, knurled

Flat head, open end

**Material**

Steel, galvanised, passivated



Thread	Grip range s [mm]	Hole ø +0.1 [mm]	Shank ø d +0/-0.15 [mm]	Head ø D ±0.3 [mm]	Head height k ±0.2 [mm]	Shank length L ±0.3 [mm]	Article No.
M 3	0.5 - 2.0	5.0	5.0	8.0	0.7	9.8	337 799 903
M 4	0.5 - 2.5	6.0	6.0	9.0	0.8	10.2	337 800 903
	2.5 - 4.0	6.0	6.0	9.0	0.8	11.7	337 801 903
M 5	0.7 - 3.0	7.0	7.0	10.0	1.0	12.0	337 805 903
	3.0 - 4.5	7.0	7.0	10.0	1.0	13.5	337 806 903
M 6	0.8 - 3.0	9.0	9.0	13.0	1.5	15.0	337 810 903
	3.0 - 5.0	9.0	9.0	13.0	1.5	17.0	337 811 903
M 8	1.0 - 3.0	11.0	11.0	16.0	1.5	16.0	337 915 903
	3.0 - 5.5	11.0	11.0	16.0	1.5	19.5	337 916 903
M 10	1.0 - 4.5	13.0	13.0	19.0	2.0	22.0	337 818 903
	4.5 - 6.0	13.0	13.0	19.0	2.0	23.5	337 819 903
M 12	1.0 - 4.0	16.0	15.9	21.7	2.0	23.2	337 968 903

Other designs available on request.



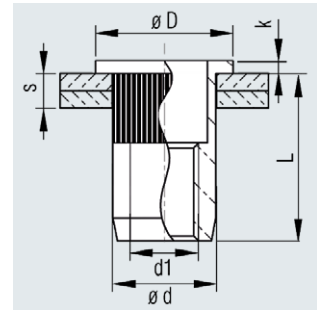
# RIV-TI® blind rivet nuts

Round body, knurled

Flat head, open end

Material

A2 stainless  
steel 1.4567



Thread	Grip range s [mm]	Hole ø +0.1 [mm]	Shank ø d max. [mm]	Head ø D 0/-0.5 [mm]	Head height k ±0.1 [mm]	Shank length L ±0.3 [mm]	Article No.
M 3	0.3-2.0	5.0	5.0	8.0	0.8	9.0	334 799 003
M 4	0.3-2.5	6.0	6.0	9.0	1.0	11.0	334 800 003
	2.5-4.0	6.0	6.0	9.0	1.0	12.5	334 801 003
M 5	0.3-3.0	7.0	7.0	10.0	1.0	12.0	334 803 003
	3.0-4.5	7.0	7.0	10.0	1.0	13.5	334 804 003
M 6	0.5-3.0	9.0	9.0	12.0	1.5	14.0	334 805 003
	3.0-5.0	9.0	9.0	12.0	1.5	16.0	334 806 003
M 8	0.5-3.0	11.0	11.0	15.0	1.5	16.0	334 807 003
	3.0-5.5	11.0	11.0	15.0	1.5	18.5	334 808 003
M 10	1.0-3.5	13.0	13.0	17.0	2.0	19.0	334 822 003
	3.5-6.0	13.0	13.0	17.0	2.0	21.5	334 823 003

Other designs available on request.



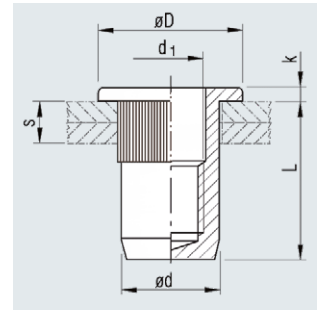
# RIV-TI® blind rivet nuts

Round body, knurled

Flat head, closed end

**Material**

Steel, galvanised, passivated



Thread	Grip range s [mm]	Hole $\varnothing$ +0.1 [mm]	Shank $\varnothing$ d +0/-0.15 [mm]	Head $\varnothing$ D $\pm$ 0.3 [mm]	Head height k $\pm$ 0.2 [mm]	Shank length L $\pm$ 1.0 [mm]	Article No.
M 4	0.5 - 2.5	6.0	6.0	9.0	0.8	15.7	337 830 903
M 5	0.5 - 2.5	7.0	7.0	10.0	1.0	18.0	337 832 903
M 6	0.7 - 3.0	9.0	9.0	13.0	1.5	21.5	337 834 903
M 8	0.7 - 3.0	11.0	11.0	16.0	1.5	24.5	337 836 903

Other designs available on request.



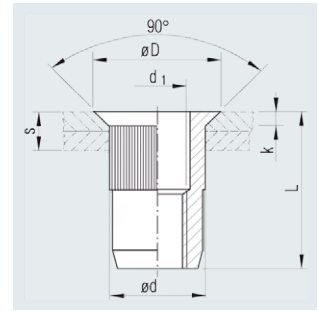
# RIV-TI® blind rivet nuts

Round body, knurled

Countersunk head, open end

## Material

Steel, galvanised, passivated



Thread	Grip range s [mm]	Hole $\varnothing$ +0.1 [mm]	Shank $\varnothing$ d +0/-0.15 [mm]	Head $\varnothing$ D $\pm 0.3$ [mm]	Head height k $\pm 0.2$ [mm]	Shank length L $\pm 0.3$ [mm]	Article No.
M 4	1.5-3.5	6.0	6.0	8.5	1.5	11.5	337 971 903
M 5	1.5-4.0	7.0	7.0	9.5	1.5	13.0	337 973 903
M 6	1.5-4.5	9.0	9.0	11.5	1.5	16.0	337 975 903
M 8	1.5-4.5	11.0	11.0	13.5	1.5	18.5	337 977 903
M 10	1.5-4.5	13.0	13.0	15.2	1.5	22.0	337 979 903
M 12	1.8-4.5	16.0	16.0	18.6	1.8	26.0	337 980 903

Other designs available on request.



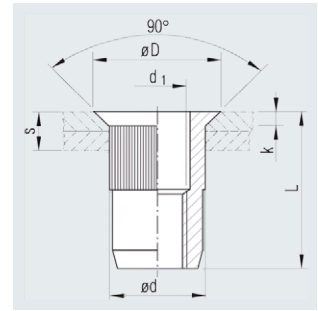
# RIV-TI® blind rivet nuts

Round body, knurled

Countersunk head, open end

**Material**

A2 stainless steel 1.4567



Thread	Grip range s [mm]	Hole ø +0.1 [mm]	Shank ø d +0.1 [mm]	Head ø D 0/-0.5 [mm]	Head height k 0.3/-0 [mm]	Shank length L 0/-0.5 [mm]	Article No.
M 4	2.0 - 4.0	6.0	5.9	9.0	1.5	12.0	334 115 003
M 5	2.0 - 4.5	7.0	6.9	10.0	1.5	13.5	334 116 003
M 6	2.0 - 4.5	9.0	8.9	12.0	1.5	16.0	334 117 003
M 8	2.0 - 4.5	11.0	10.9	14.0	1.5	18.0	334 118 003

Other designs available on request.

# RIV-TI® blind rivet nuts

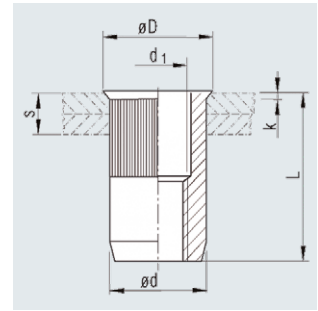


## Round body, knurled

Small countersunk head, open end

### Material

Steel, galvanised, passivated



Thread	Grip range s [mm]	Hole ø +0.1 [mm]	Shank ø d +0/-0.15 [mm]	Head ø D ±0.3 [mm]	Head height k ±0.2 [mm]	Shank length L ±0.3 [mm]	Article No.
M 3	0.5 - 1.5	5.0	5.0	5.7	0.4	9.0	337 859 903
M 4	0.5 - 2.0	6.0	6.0	7.0	0.5	10.0	337 860 903
	2.5 - 4.0	6.0	6.0	7.0	0.5	12.0	337 861 903
M 5	0.5 - 2.5	7.0	7.0	8.0	0.5	12.0	337 862 903
	2.5 - 4.0	7.0	7.0	8.0	0.6	14.0	337 863 903
M 6	0.7 - 3.0	9.0	9.0	10.0	0.5	15.0	337 864 903
	3.0 - 5.0	9.0	9.0	10.0	0.5	17.0	337 865 903
M 8	1.0 - 3.0	11.0	11.0	12.0	0.5	16.0	337 866 903
	3.0 - 5.5	11.0	11.0	12.0	0.5	18.5	337 867 903
M 10	1.0 - 4.0	13.0	13.0	14.1	0.6	20.5	337 868 903
	4.0 - 6.0	13.0	13.0	14.1	0.6	23.5	337 869 903
M 12	1.0 - 4.0	16.0	16.0	17.2	0.6	24.0	337 870 903
	4.0 - 6.0	16.0	16.0	17.2	0.6	27.0	337 871 903

Other designs available on request



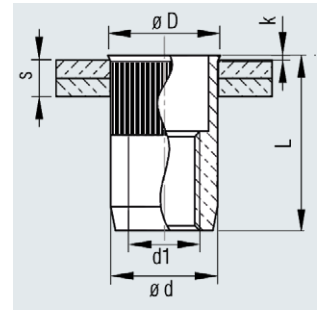
# RIV-TI® blind rivet nuts

## Round body, knurled

Small countersunk head, open end

### Material

A2 stainless steel 1.4567



Thread	Grip range s [mm]	Hole ø +0.1 [mm]	Shank ø d max. [mm]	Head ø D ±0.3 [mm]	Head height k +0.3/-0 [mm]	Shank length L +0.5/-0 [mm]	Article No.
M 3	0.5-2.0	5.0	5.0	6.0	0.5	9.0	334 809 003
M 4	0.5-2.5	6.0	6.0	7.0	0.5	11.0	334 810 003
	2.5-4.0	6.0	6.0	7.0	0.5	12.5	334 811 003
M 5	0.5-3.0	7.0	7.0	8.0	0.5	12.0	334 812 003
	3.0-4.5	7.0	7.0	8.0	0.5	13.5	334 813 003
M 6	0.5-3.0	9.0	9.0	10.0	0.5	14.0	334 814 003
	3.0-5.0	9.0	9.0	10.0	0.5	16.0	334 815 003
M 8	0.5-3.0	11.0	11.0	12.0	0.5	16.0	334 816 003
	3.0-5.5	11.0	11.0	12.0	0.5	18.5	334 817 003
M 10	1.0-3.5	13.0	13.0	14.2	0.8	19.0	334 818 003
	3.5-6.0	13.0	13.0	14.2	0.8	21.5	334 819 003

Other designs available on request





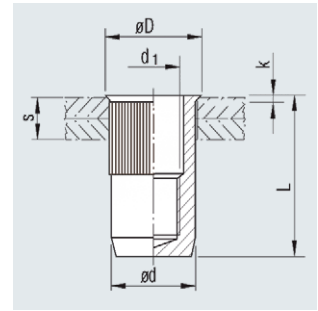
## RIV-TI® blind rivet nuts

### Round body, knurled

Small countersunk head, closed end

### Material

Steel, galvanised, passivated



Thread	Grip range s [mm]	Hole $\varnothing$ +0.1 [mm]	Shank $\varnothing$ d +0/-0.15 [mm]	Head $\varnothing$ D $\pm$ 0.3 [mm]	Head height k $\pm$ 0.2 [mm]	Shank length L $\pm$ 1.0 [mm]	Article No.
M 4	0.5 - 2.5	6.0	6.0	6.8	0.5	15.0	337 839 903
M 5	0.5 - 2.5	7.0	7.0	7.9	0.5	18.0	337 841 903
M 6	0.5 - 3.0	9.0	9.0	10.0	0.5	21.5	337 843 903
M 8	1.0 - 3.2	11.0	11.0	12.0	0.5	22.5	337 845 903

Other designs available on request.



# RIV-TI® blind rivet nuts

## Mechanical loads

The values shown below are based on our own tests and may vary greatly depending on the material, hole tolerance, surface, etc. They are therefore for guideline purposes only. To obtain exact load values, it is recommended that you run tests on the original component using the intended screws.

	Thread size	Aluminium	Steel	Stainless steel	
Axial proof load N	M3	2500	3900	4900	
	M4	4000	5000	7800	
	M5	4900	9000	13500	
	M6	8400	17500	21000	
	M8	10200	27000	32000	
	M10	13000	30200	40000	
	M12	NA	NA	NA	
Torque in Nm up to max. distortion with max. grip range	M3	2	2	2	
	M4	2,5	4	5	
	M5	7	8	15	
	M6	14	10	20	
	M8	20	29	49	
	M10	27	39	NA	
	M12	NA	NA	NA	