

# **PUSH-ON FITTINGS**

**INOX AISI 316L**

**PLUS**

**GREAT GRIPPING SYSTEM WITH  
THE LOCKING NUT**

---

**SUITABLE FOR POTABLE WATER**

---

**EASY TO BE USED AND EXTREMELY  
STRONG**

---

**FULL STAINLESS STEEL AISI 316L**



p. 201 / **2700**



p. 201 / **2710**



p. 202 / **2720**



p. 202 / **2725**



p. 202 / **2730**



p. 202 / **2740**



p. 203 / **2745**



p. 203 / **2750**



p. 203 / **2760**



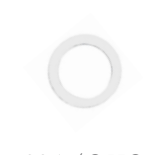
p. 203 / **2770**



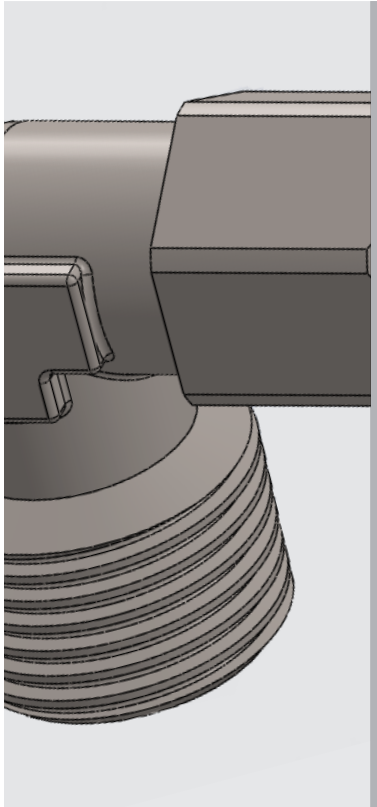
p. 204 / **2780**



p. 204 / **2790**



p. 204 / **2612**



-40°C ÷ +140°C  
0°C ÷ +140°C for swivel fittings



Up to 25 Bar at 20°C.  
Up to 16 Bar at 20°C for swivel



Compressed air, potable water and food fluids suitable with construction materials



Taper gas BSPT ISO 7 from R1/8" to R1/2"  
Parallel gas BSPP ISO 228 from G1/8" to G1/2"



Polyethylene, PTFE, FEP



**Body:** Stainless steel AISI 316L  
**Lock nut:** Stainless steel AISI 316L  
**O'ring for swivel fittings:** FKM (viton)

**FEATURES**

The fittings of this range, made completely in AISI 316L, are suitable also for food contact and chimica applications



Products in compliance with the directive 2002/95/EC

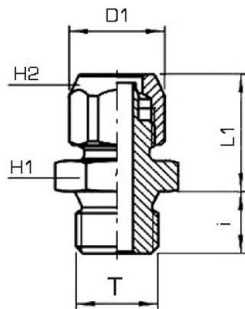
**RoHS2**

Products in compliance with the directive 2011/65/EU



**2700**

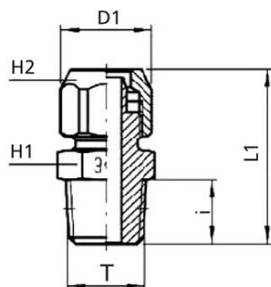
Male connector BSPP thread



CODE	T	ØD	I	L1	D1	H1	H2	GR.
2700TR1864	G1/8"	6/4	8	18,5	13,0	13	12	15,0
2700TR1464	G1/4"	6/4	10	19,0	13,0	17	12	24,0
2700TR1886	G1/8"	8/6	8	18,5	15,5	13	14	18,0
2700TR1486	G1/4"	8/6	10	19,0	15,5	17	14	27,0
2700TR18108	G1/8"	10/8	8	20,0	18,5	14	17	28,0
2700TR14108	G1/4"	10/8	10	20,5	18,5	17	17	32,0
2700TR38108	G3/8"	10/8	10	20,5	18,5	19	17	40,0
2700TR381210	G3/8"	12/10	10	22,0	21,0	19	19	34,0
2700TR121210	G1/2"	12/10	12	22,5	21,0	24	19	34,0

**2710**

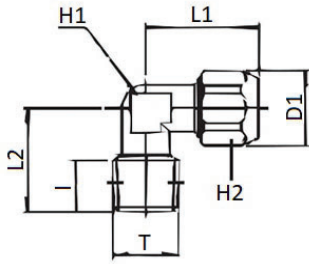
Male connector BSPT thread



CODE	T	ØD	I	L1	D1	H1	H2	GR.
2710TR1864	R1/8"	6/4	7,5	26,0	13,0	12	12	14,0
2710TR1464	R1/4"	6/4	11,0	30,0	13,0	14	12	21,0
2710TR1886	R1/8"	8/6	7,5	26,0	15,5	12	14	17,0
2710TR1486	R1/4"	8/6	11,0	30,0	15,5	14	14	24,0
2710TR18108	R1/8"	10/8	7,5	27,5	18,5	14	17	28,0
2710TR14108	R1/4"	10/8	11,0	31,5	18,5	14	17	30,0
2710TR38108	R3/8"	10/8	11,5	32,0	18,5	17	17	40,0
2710TR381210	R3/8"	12/10	11,5	33,5	21,0	17	19	34,0
2710TR121210	R1/2"	12/10	14,0	36,5	21,0	22	19	34,0

**2720**

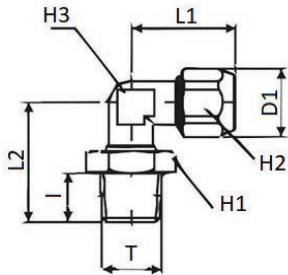
Male elbow BSPT thread



CODE	T	ØD	I	L1	L2	D1	H1	H2	GR.
2720TR1864	R1/8"	6/4	9,0	22,5	18,5	13	10	12	19,0
2720TR1464	R1/4"	6/4	10,5	22,5	21,0	13	10	12	22,0
2720TR1886	R1/8"	8/6	9,0	22,5	18,5	15,5	10	14	20,0
2720TR1486	R1/4"	8/6	10,5	22,5	21,0	15,5	10	14	23,0
2720TR3886	R3/8"	8/6	11,0	26,5	24,5	15,5	13	14	40,0
2720TR18108	R1/8"	10/8	9,0	24,5	18,5	18,5	10	17	26,0
2720TR14108	R1/4"	10/8	10,5	24,5	21,0	18,5	10	17	28,0
2720TR38108	R3/8"	10/8	11,0	27,0	24,5	18,5	13	17	20,0
2720TR381210	R3/8"	12/10	11,5	29,0	25,0	21	13	19	40,0
2720TR121210	R1/2"	12/10	14,0	30,5	29,0	21	17	19	40,0

**2725**

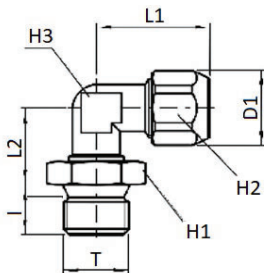
Swivel male elbow BSPT thread



CODE	T	ØD	I	L1	L2	D1	H1	H2	H3	GR.
2725TR1864	R1/8"	6/4	7,5	22,5	21,5	13,0	13	12	10	24,0
2725TR1464	R1/4"	6/4	11,0	22,5	25,5	13,0	17	12	10	28,0
2725TR1886	R1/8"	8/6	7,5	22,5	21,5	15,0	13	14	10	25,0
2725TR1486	R1/4"	8/6	11,0	22,5	25,5	15,0	17	14	10	30,0
2725TR14108	R1/4"	10/8	11,0	24,0	25,5	18,5	17	17	10	36,0

**2730**

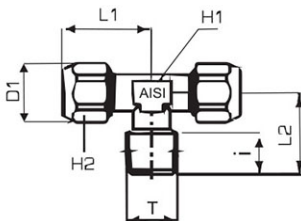
Swivel male elbow BSP thread



CODE	T	ØD	I	L1	L2	D1	H1	H2	H3	GR.
2730TR1864	G1/8"	6/4	8	22,5	14,0	13,0	13	12	10	24,0
2730TR1464	G1/4"	6/4	10	22,5	14,5	13,0	17	12	10	24,0
2730TR1886	G1/8"	8/6	8	22,5	14,0	15,5	13	14	10	25,0
2730TR1486	G1/4"	8/6	10	22,5	14,5	15,5	17	14	10	29,0
2730TR14108	G1/4"	10/8	10	24,0	14,5	18,5	17	17	10	35,0

**2740**

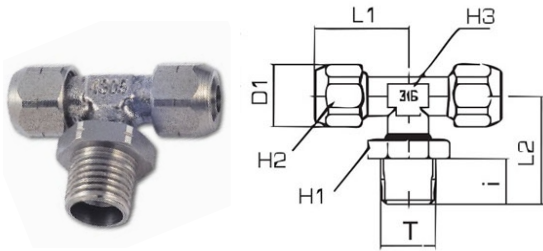
Male tee BSPT thread



CODE	T	ØD	I	L1	L2	D1	H1	H2	GR.
2740TR1864	R1/8"	6/4	9	22,5	18,5	13,0	10	12	36,0
2740TR1464	R1/4"	6/4	10,5	22,5	21,0	13,0	10	12	44,0
2740TR1886	R1/8"	8/6	9	22,5	18,5	15,5	10	14	31,0
2740TR1486	R1/4"	8/6	10,5	22,5	21,0	15,5	10	14	36,0
2740TR18108	R1/8"	10/8	9	25,0	18,5	18,5	10	17	36,0
2740TR14108	R1/4"	10/8	10,5	25,0	21,0	18,5	10	17	74,0
2740TR38108	R3/8"	10/8	11,5	27,0	25,0	18,5	13	17	70,0
2740TR381210	R3/8"	12/10	11,5	29,0	25,0	21,0	13	19	74,0
2740TR121210	R1/2"	12/10	14,0	30,5	29,0	21,0	17	19	74,0

## 2745

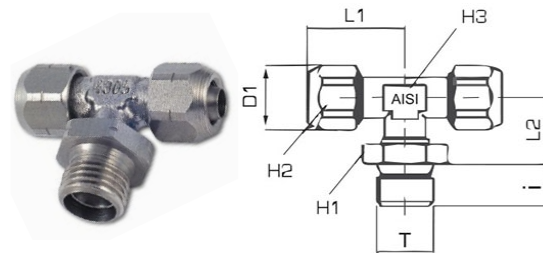
Swivel male tee BSPT thread



CODE	T	ØD	I	L1	L2	D1	H1	H2	H3	GR.
2745TR1864	R1/8"	6/4	7,5	22,5	21,5	13,0	13	12	10	35,0
2745TR1464	R1/4"	6/4	11,0	22,5	25,5	13,0	17	12	10	39,0
2745TR1886	R1/8"	8/6	7,5	22,5	21,5	15,0	13	14	10	38,0
2745TR1486	R1/4"	8/6	11,0	22,5	25,5	15,0	17	14	10	42,0
2745TR14108	R1/4"	10/8	11,0	24,0	25,5	18,5	17	17	10	40,0

## 2750

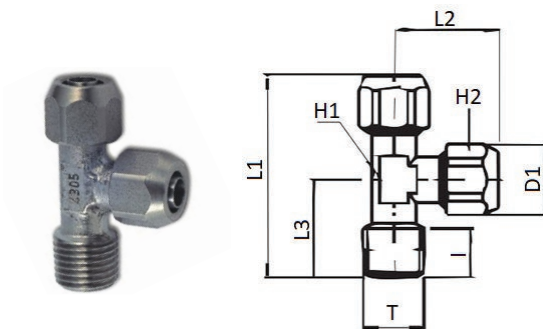
Swivel male tee BSPP thread



CODE	T	ØD	I	L1	L2	D1	H1	H2	H3	GR.
2750TR1864	G1/8"	6/4	8	22,5	14,0	13,0	13	12	10	36,0
2750TR1464	G1/4"	6/4	10	22,5	14,5	13,0	17	12	10	38,0
2750TR1886	G1/8"	8/6	8	22,5	14,0	15,0	13	14	10	37,0
2750TR1486	G1/4"	8/6	10	22,5	14,5	15,0	17	14	10	41,0
2750TR14108	G1/4"	10/8	10	24,0	14,5	18,5	17	17	10	54,0

## 2760

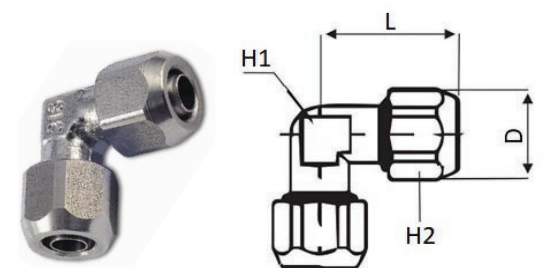
Lateral male tee BSPT thread



CODE	T	ØD	I	L1	L2	L3	D1	H1	H2	GR.
2760TR1864	R1/8"	6/4	9,0	41,0	22,5	18,5	13,0	10	12	35,0
2760TR1464	R1/4"	6/4	10,5	43,5	22,5	21,0	13,0	10	12	40,0
2760TR1886	R1/8"	8/6	9,0	41,0	22,5	18,5	15,0	10	14	35,0
2760TR1486	R1/4"	8/6	10,5	43,5	22,5	21,0	15,0	10	14	35,0
2760TR18108	R1/8"	10/8	9,0	43,5	25,0	18,5	18,5	10	17	35,0
2760TR14108	R1/4"	10/8	10,5	46,0	25,0	21,0	18,5	10	17	40,0
2760TR38108	R3/8"	10/8	11,5	52,0	27,0	25,0	18,5	13	17	70,0

## 2770

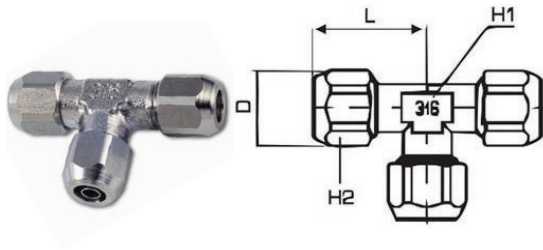
Union elbow connector



CODE	ØD	L	D1	H1	H2	GR.
2770TR64	6/4	22,5	13,0	10	12	29,0
2770TR86	8/6	22,5	13,5	10	14	29,0
2770TR108	10/8	25,0	15,5	10	17	70,0
2770TR1210	12/10	29,0	21,0	13	19	40,0

**2780**

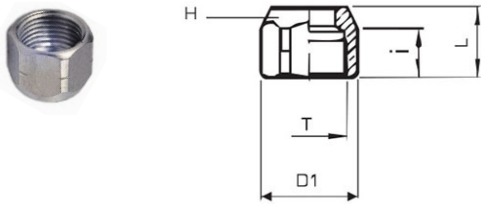
Union tee connector



CODE	ØD-A	ØD-B	L	D1	H1	H2	GR.
2780TR64	6/4	6/4	22,5	13,0	10	12	37,0
2780TR86	8/6	8/6	22,5	15,6	10	14	39,0
2780TR108	10/8	10/8	25,0	18,5	10	17	61,0
2780TR1210	12/10	12/10	29,0	21,0	13	19	115,0

**2790**

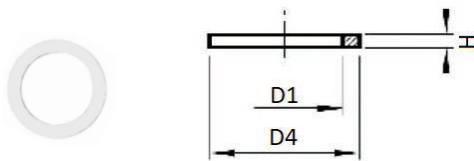
Locking nut



CODE	T	ØD	L	I	D1	H	GR.
2790TRM10164	M10X1	6/4	11,5	8,0	13,1	12	5,0
2790TRM12186	M12X1	8/6	11,5	8,0	15,3	14	6,0
2790TRM141108	M14X1	10/8	13,5	9,5	18,5	17	13,0
2790TRM1611210	M16X1	12/10	14,5	9,0	21,0	19	15,0

**2612**

PVC washer



CODE	THREAD	D4	D1	H	GR.
2612TR18	G1/8"	14,0	10,0	1,5	18,0
2612TR14	G1/4"	17,5	13,5	1,5	18,0
2612TR38	G3/8"	21,0	16,7	1,5	18,0
2612TR12	G1/2"	26,0	21,3	1,5	18,0