

PLASTIC PUSH-IN FITTINGS FOR HIGH PERFORMANCE

PLUS

**SUITABLE FOR CONTACT WITH POTABLE
WATER AND FOOD.**

**STUDIED TO ENSURE A COMPLETE
PASSAGE** and to keep the characteristics of
the fluids unchanged.

DYNAMIC GRIPPING SYSTEM to be used
with the food fluids.

EPDM SEALING in order to guarantee a
long duration in time.

**GREAT CHEMICAL AND MECHANICAL
RESISTANCE** even at high temperature.

**CAN BE USED WITH AIR EVEN AT VERY
LOW TEMPERATURES.**

**SAFETY CLIPS TO AVOID ACCIDENTAL
DISCONNECTIONS** and for a perfect
working even in case of extreme applications.



p. 73 / **HPC-R**



p. 73 / **HPC-G**



p. 74 / **HCF-G**



p. 74 / **HMM**



p. 74 / **HPL-R**



p. 75 / **HRPL-R**



p. 75 / **HRPL-G**



p. 75 / **HRPT-R**



p. 75 / **HRPT-G**



p. 76 / **HRST-R**



p. 76 / **HRST-G**



p. 76 / **HRWT-R**



p. 76 / **HRWT-G**



p. 77 / **HCJ-R**



p. 77 / **HCJ-G**



p. 77 / **HUC**



p. 78 / **HUL**



p. 78 / **HUT**



p. 78 / **HUY**



p. 79 / **HZA**



p. 79 / **HPF**



p. 79 / **HGJ**



p. 80 / **HLJ**



p. 80 / **HCJB**



p. 80 / **HLJB**



p. 81 / **HPP**



p. 81 / **HCF-UNF**



p. 81 / **HCF-UNS**



p. 82 / **HCF-NH**



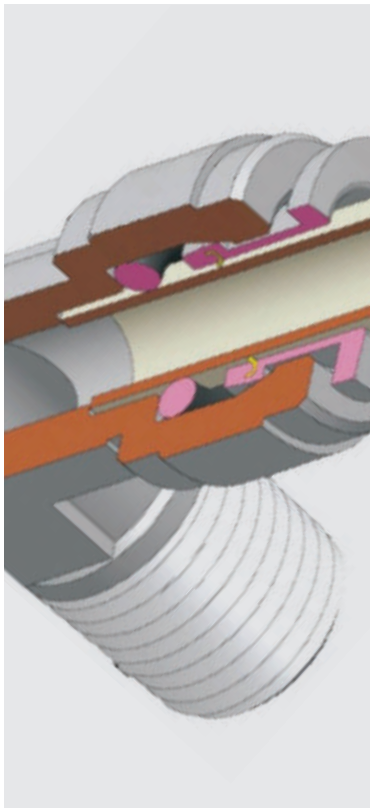
p. 82 / **HCBB**



p. 82 / **HCP**



p. 82 / **HUFF**



Dry air: -20°C ÷ 98°
Air & fluids: 1°C ÷ 98°C
 (see the table)



20 Bar - 750 mmHg
 (depending from the tubes and temperature applied)



Water, beverages, vacuum,
 compressed air, selected gases,
 liquids and fluids compatible with
 the construction materials.



Taper gas BSPT ISO 7
 from R1/8" to R1/2"
 Parallel gas BSPP ISO 228
 from G1/8" to G3/4"
 UNF 7/16" - 20
 UNS 7/16" - 24
 NH 3/4



Polyethylene, Polyamide,
 Polyurethane, PTFE- FEP

Soft metal tubes:

brass, copper and mild steel

Hard metal tubes:

please contact our tecnica
 department for stainless steel and
 other hard materials tubes use



Body: POM

Gripping Collet: POM + AISI 301

O-Ring: EPDM suitable for food contact



Products in compliance with
 the directive 2002/95/EC



RoHS2

Products in compliance with
 the directive 2011/65/EU



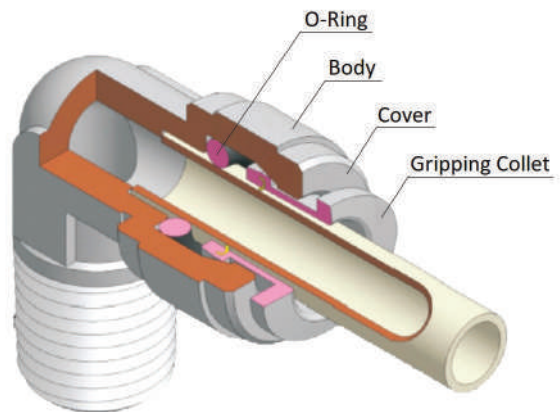
NSF51-NSF61



WORKING PRESSURE AND TEMPERATURE

Ø / °C	-20 °C	1 °C*	25 °C*	70 °C*	98 °C*
4 mm	0 → 8 Bar With dry air only	20 Bar	20 Bar	16 Bar	10 Bar
6 mm		20 Bar	20 Bar	16 Bar	10 Bar
8 mm		20 Bar	20 Bar	16 Bar	10 Bar
10 mm		16 Bar	16 Bar	14 Bar	10 Bar
12 mm		14 Bar	14 Bar	8 Bar	6 Bar
15 mm		14 Bar	14 Bar	8 Bar	6 Bar
22 mm		14 Bar	14 Bar	8 Bar	6 Bar

CONSTRUCTION MATERIALS



MAX TORQUE

THREADS	1/8	1/4	3/8	1/2	3/4
MAX TORQUE	1,5 Nm	1,5 Nm	3,0 Nm	3,0 Nm	4,0 Nm

INSERTION OF THE TUBE INTO THE FITTING

- Make sure the tube is fully inserted into the fitting.
- To insert the tube into the fitting cut the tube at a squared angle (90°), insert up to the end and pull gently to make sure it is correctly connected.
- If there are any damages or scratches on the tube surface or an oval shape, air leakage and tube release may occur. Check it carefully.
- The OD of polyurethane tubes expand when pressure is applied. Reinsertion into the fitting may not be possible. Check the OD of the tube and change the tube if the expansion is serious.
- Always remove by cutting the part of the tube previously inserted into the fitting. Use a proper tube cutter in order to cut the tube.

DISCONNECTION OF THE TUBE FROM THE FITTING

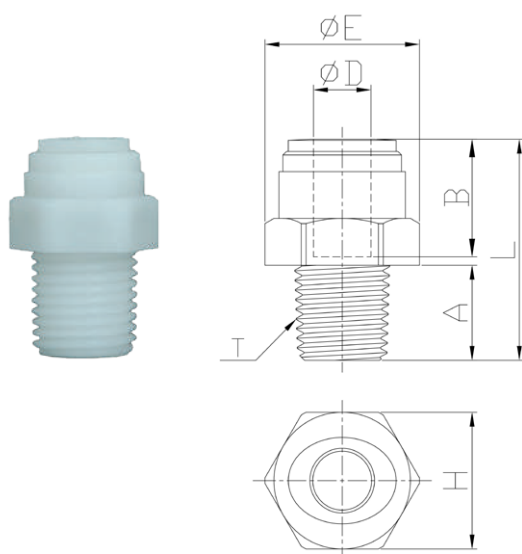
- Make sure the pressure is zero before releasing the tube from the fitting.
- To release the tube, press the release ring regularly at the end and pull the tube with one hand.

INSERTION TUBE

DIAMETER TUBES Ø	Ø 4 mm	Ø 6 mm	Ø 8 mm	Ø 10 mm	Ø 12 mm	Ø 15 mm	Ø 22 mm
TUBES INSERTION LENGHT (mm)	14,7	16,1	17,5	20,1	24,7	29,4	33,8

HPC-R

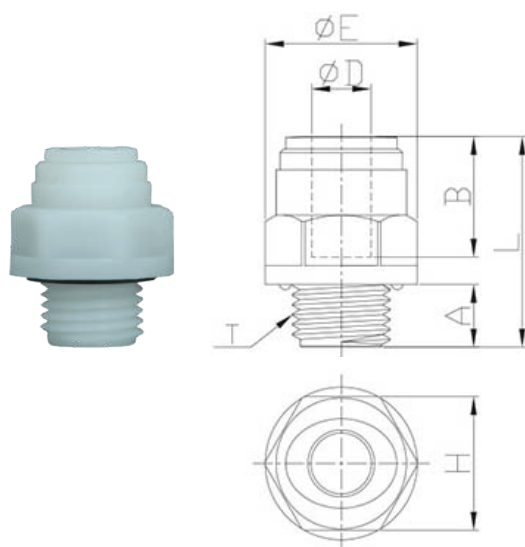
Male connector BSPT



CODE	ØD	T	A	B	ØE	H	L	GR.
HPC04R01W	4	R1/8"	9,1	14,7	18,5	17	26,0	4,1
HPC06R01W	6	R1/8"	9,1	16,1	18,5	17	26,2	3,9
HPC06R02W	6	R1/4"	13,1	16,1	18,5	17	26,7	4,2
HPC06R03W	6	R3/8"	13,5	16,1	21,0	19	26,6	5,9
HPC08R01W	8	R1/8"	9,1	17,5	21,0	19	28,1	5,2
HPC08R02W	8	R1/4"	13,1	17,5	21,0	19	30,6	5,8
HPC08R03W	8	R3/8"	13,5	17,5	21,0	19	27,0	5,7
HPC10R03W	10	R3/8"	13,5	20,1	23,2	21	28,8	6,7
HPC10R04W	10	R1/2"	16,3	20,1	24,4	22	32,1	9,6
HPC12R03W	12	R3/8"	13,5	24,7	26,5	24	32,2	8,9
HPC12R04W	12	R1/2"	16,3	24,7	26,5	24	34,3	11,0

HPC-G

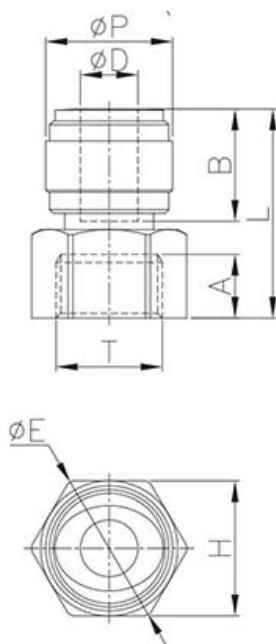
Male connector BSPP



CODE	ØD	T	A	B	ØE	H	L	GR.
HPC04G01W	4	G1/8"	6,0	14,7	16,6	15	21,9	3,3
HPC04G02W	4	G1/4"	8,5	14,7	20,5	18	23,9	4,9
HPC06G01W	6	G1/8"	6,0	16,1	16,6	15	24,1	3,3
HPC06G02W	6	G1/4"	8,5	16,1	20,5	18	24,1	4,8
HPC08G01W	8	G1/8"	6,0	17,5	18,5	17	27,0	5,2
HPC08G02W	8	G1/4"	8,5	17,5	20,5	18	28,5	6,1
HPC08G03W	8	G3/8"	9,0	17,5	24,0	21	26,5	7,0
HPC08G04W	8	G1/2"	12,5	17,5	28,5	26	29,5	11,9
HPC10G02W	10	G1/4"	8,5	20,1	21,1	19	30,8	7,2
HPC10G03W	10	G3/8"	9,0	20,1	24,2	21	26,3	7,0
HPC10G04W	10	G1/2"	12,5	20,1	28,5	26	29,8	11,3
HPC12G03W	12	G3/8"	9,0	24,7	27,0	24	34,2	11,6
HPC12G04W	12	G1/2"	12,5	24,7	28,5	26	32,7	12,4
HPC15G04W	15	G1/2"	12,5	29,4	28,8	26	43,4	17,0
HPC15G06W	15	G3/4"	14,5	29,4	39,0	33	39,0	24,5
HPC22G06W	22	G3/4"	14,5	33,8	37,0	33	51,0	28,2

HCF-G

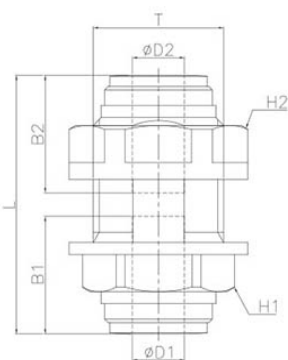
Female adapter BSPP



CODE	ØD	T	ØP	L	A	B	H	ØE	GR.
HCF04G01W	4	G1/8"	17,6	26,9	6,0	14,7	17	19,2	6,0
HCF06G01W	6	G1/8"	17,6	27,1	6,0	16,1	17	19,2	6,1
HCF06G02W	6	G1/4"	17,6	29,1	8,5	16,1	19	21,5	7,0
HCF06G03W	6	G3/8"	17,6	30,6	9,0	16,1	24	27,3	9,9
HCF08G01W	8	G1/8"	17,6	27,5	6,0	17,5	17	19,2	6,0
HCF08G02W	8	G1/4"	17,6	29,5	8,5	17,5	19	21,5	6,7
HCF08G03W	8	G3/8"	17,6	31,0	9,0	17,5	24	27,3	9,7
HCF08G04W	8	G1/2"	20,0	38,0	12,5	17,5	27	30,0	13,8
HCF08G06W	8	G3/4"	20,0	36,6	10,0	17,5	36,7	41,6	39,2
HCF10G02W	10	G1/4"	23,0	34,5	8,5	20,1	19	21,5	10,8
HCF10G03W	10	G3/8"	23,0	37,0	9,0	20,1	24	27,3	13,7
HCF10G04W	10	G1/2"	20,0	38,3	12,5	20,1	27	30,0	13,3
HCF10G06W	10	G3/4"	20,0	36,9	10,0	20,1	36,7	41,6	38,6
HCF12G02W	12	G1/4"	23,0	37,7	9,0	24,7	24	27,3	13,0
HCF12G03W	12	G3/8"	23,0	37,7	9,0	24,7	24	27,3	13,0
HCF12G04W	12	G1/2"	23,0	41,7	12,5	24,7	27	30,0	15,4
HCF15G06W	15	G3/4"	28,0	45,4	12,0	29,4	33	37,0	25,1

HMM

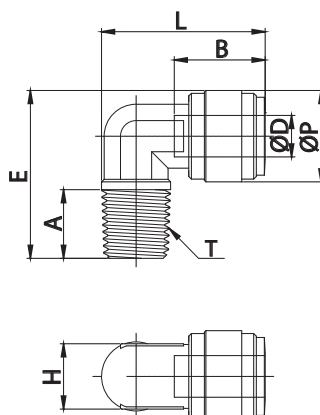
Bulkhead connector



CODE	ØD1	ØD2	T	L	B1	B2	H1	H2	GR.
HMM0404W	4	4	M15X1,5P	32,4	14,7	14,7	17	18	6,9
HMM0604W	6	4	M17X1,5P	35,5	16,1	16,1	19	21	9,8
HMM0606W	6	6	M17X1,5P	35,7	16,1	16,1	19	21	9,6
HMM0806W	8	6	M20X1,75P	38,1	17,5	17,5	21	25,5	14,3
HMM0808W	8	8	M20X1,75P	38,5	17,5	17,5	21	25,5	14,0
HMM1010W	10	10	M24X1,75P	42,2	20,1	20,1	24	28,5	19,5
HMM1212W	12	12	M27X2,0P	51,4	24,7	24,7	27	31	28,2

HPL-R

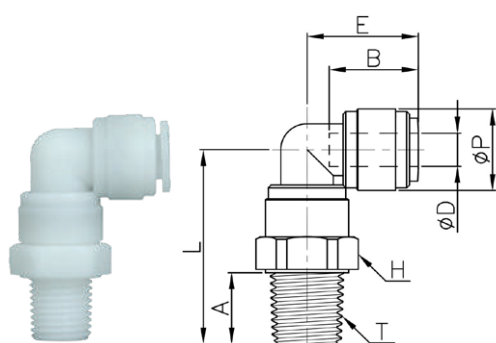
Male elbow BSPT



CODE	ØD	T	ØP	A	B	E	H	L	GR.
HPL04R01W	4	R1/8"	15,0	9,1	14,7	25,6	10	25,2	4,2
HPL06R01W	6	R1/8"	15,0	9,1	16,1	25,6	10	25,4	4,1
HPL06R02W	6	R1/4"	15,0	13,1	16,1	30,6	10	27,0	5,1
HPL06R03W	6	R3/8"	17,6	13,5	16,1	32,6	13	33,1	8,4
HPL08R02W	8	R1/4"	17,6	13,1	17,5	32,2	13	31,5	7,0
HPL08R03W	8	R3/8"	17,6	13,5	17,5	32,6	13	33,5	8,0
HPL10R02W	10	R1/4"	23,6	13,1	20,1	38,3	17	37,5	14,1
HPL10R03W	10	R3/8"	20,0	13,5	20,1	35,7	14	33,9	9,2
HPL12R02W	12	R1/4"	23,6	13,1	24,7	38,3	17	38,2	13,1
HPL12R03W	12	R3/8"	23,0	13,5	24,7	38,3	17,0	38,4	13,2
HPL12R04W	12	R1/2"	23,0	16,3	24,7	41,4	17,7	40,7	15,6

HRPL-R

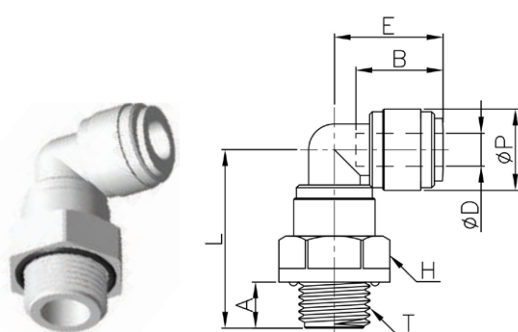
Male swivel elbow BSPT



CODE	ØD	T	ØP	A	B	E	H	L	GR.
HRPL06R01W	6	R1/8"	15,0	9,1	16,1	20,1	17	31,7	7,2
HRPL06R01W	6	R1/4"	15,0	13,1	16,1	20,1	17	35,7	8,0
HRPL08R01W	8	R1/8"	17,6	9,1	17,5	21,9	19	33,4	9,9
HRPL08R02W	8	R1/4"	17,6	13,1	17,5	21,9	19	37,4	10,7
HRPL08R03W	8	R3/8"	17,6	13,5	17,5	21,9	19	37,8	11,4
HRPL10R03W	10	R3/8"	20,0	13,5	20,1	25,8	21	41,8	15,4

HRPL-G

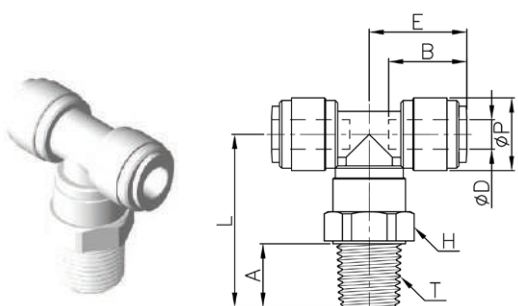
Male swivel elbow BSPP



CODE	ØD	T	ØP	A	B	E	H	L	GR.
HRPL08G01W	8	G1/8"	17,6	6,0	17,5	21,9	18,0	31,9	10,4
HRPL08G02W	8	G1/4"	17,6	8,5	17,5	21,9	18,0	34,4	11,0
HRPL08G03W	8	G3/8"	17,6	9,0	17,5	21,9	22,0	34,9	12,8
HRPL10G02W	10	G1/4"	20,0	8,5	20,1	25,8	22,0	38,0	15,4
HRPL10G03W	10	G3/8"	20,0	9,0	20,1	25,8	22,0	38,5	15,8
HRPL10G04W	10	G1/2"	20,0	12,5	20,1	25,8	26,0	42,0	19,1
HRPL12G03W	12	G3/8"	23,0	9,0	24,7	31,7	26,0	43,7	23,2

HRPT-R

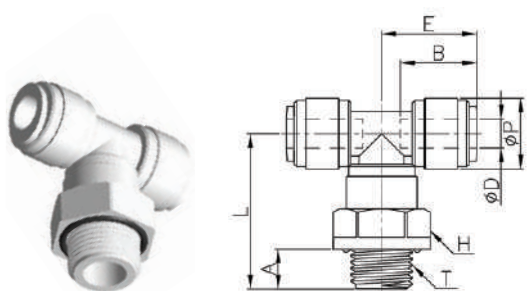
Male swivel tee BSPT



CODE	ØD	T	ØP	A	B	E	H	L	GR.
HRPT06R01W	6	R1/8"	15,0	9,1	16,1	20,1	17,0	31,7	9,3
HRPT06R02W	6	R1/4"	15,0	13,1	16,1	20,1	17,0	35,7	10,3
HRPT08R01W	8	R1/8"	17,6	9,1	17,5	21,9	19,0	33,4	13,1
HRPT08R02W	8	R1/4"	17,6	13,1	17,5	21,9	19,0	37,4	14,0
HRPT08R03W	8	R3/8"	17,6	13,5	17,5	21,9	19,0	37,8	14,6
HRPT10R03W	10	R3/8"	20,0	13,5	20,1	25,8	21,0	41,8	19,4

HRPT-G

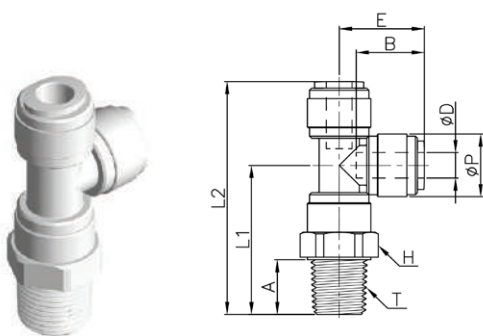
Male swivel tee BSPP



CODE	ØD	T	ØP	A	B	E	H	L	GR.
HRPT08G01W	8	G1/8"	17,6	6,0	17,5	21,9	18	31,9	13,4
HRPT08G02W	8	G1/4"	17,6	8,5	17,5	21,9	18	34,4	14,0
HRPT08G03W	8	G3/8"	17,6	9,0	17,5	21,9	22	34,9	15,8
HRPT10G02W	10	G1/4"	20,0	8,5	20,1	25,8	22	38,0	19,8
HRPT10G03W	10	G3/8"	20,0	9,0	20,1	25,8	22	38,5	20,2
HRPT10G04W	10	G1/2"	20,0	12,5	20,1	25,8	26	42,0	29,5
HRPT12G03W	12	G3/8"	23,0	9,0	24,7	31,7	26	43,7	30,0

HRST-R

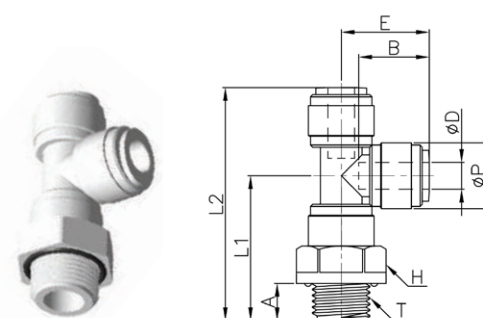
Male swivel run tee BSPT



CODE	ØD	T	ØP	A	B	E	H	L1	L2	GR.
HRST06R01W	6	R1/8"	15,0	9,1	16,1	20,1	17	31,7	51,8	9,3
HRST06R02W	6	R1/4"	15,0	13,1	16,1	20,1	17	35,7	55,8	10,2
HRST08R01W	8	R1/8"	17,6	9,1	17,5	21,9	19	33,4	55,3	13,1
HRST08R02W	8	R1/4"	17,6	13,1	17,5	21,9	19	37,4	59,3	14,2
HRST08R03W	8	R3/8"	17,6	13,5	17,5	21,9	19	37,8	59,7	14,6
HRST10R03W	10	R3/8"	20,0	13,5	20,1	25,8	21	41,8	67,6	19,4

HRST-G

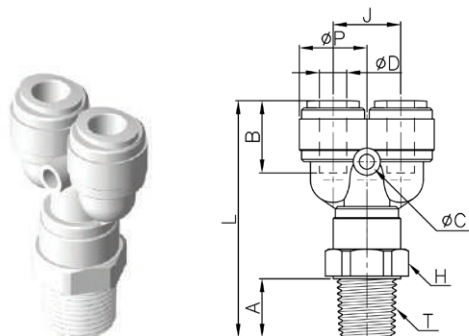
Male swivel run tee BSPP



CODE	ØD	T	ØP	A	B	E	H	L1	L2	GR.
HRST08G01W	8	G1/8"	17,6	6,0	17,5	21,9	18,0	31,9	53,8	13,4
HRST08G02W	8	G1/4"	17,6	8,5	17,5	21,9	18,0	34,4	56,3	14,0
HRST08G03W	8	G3/8"	17,6	9,0	17,5	21,9	22,0	34,9	56,8	15,8
HRST10G02W	10	G1/4"	20,0	8,5	20,1	25,8	22,0	38,0	63,8	19,8
HRST10G03W	10	G3/8"	20,0	9,0	20,1	25,8	22,0	38,5	64,3	20,2
HRST10G04W	10	G1/2"	20,0	12,5	20,1	25,8	26,0	42,0	67,8	29,5
HRST12G03W	12	G3/8"	23,0	9,0	24,7	31,7	26,0	43,7	75,4	30,0

HRWT-R

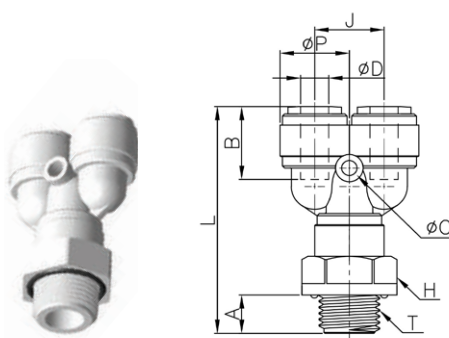
Male swivel Y BSPT



CODE	ØD	T	ØP	A	B	J	H	L	ØC	GR.
HRWT06R01W	6	R1/8"	15,5	9,1	16,1	15,5	17,0	50,4	3,3	11,6
HRWT06R02W	6	R1/4"	15,5	13,1	16,1	15,5	17,0	54,4	3,3	12,5
HRWT08R01W	8	R1/8"	17,6	9,1	17,5	17,6	19,0	52,5	4,5	14,0
HRWT08R02W	8	R1/4"	17,6	13,1	17,5	17,6	19,0	56,5	4,5	14,9
HRWT08R03W	8	R3/8"	17,6	13,5	17,5	17,6	19,0	56,9	4,5	15,5
HRWT10R03W	10	R3/8"	20,0	13,5	20,1	20,0	21,0	62,2	4,5	20,1

HRWT-G

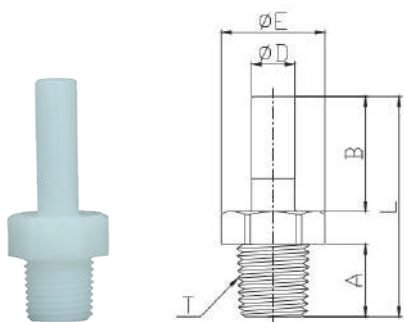
Male swivel Y BSPP



CODE	ØD	T	ØP	A	B	J	H	L	ØC	GR.
HRWT08G01W	8	G1/8"	17,6	6,0	17,5	17,6	18,0	51,0	4,5	13,9
HRWT08G02W	8	G1/4"	17,6	8,5	17,5	17,6	18,0	53,5	4,5	15,1
HRWT08G03W	8	G3/8"	17,6	9,0	17,5	17,6	22,0	54,0	4,5	16,8
HRWT10G02W	10	G1/4"	20,0	8,5	20,1	20,0	22,0	58,4	4,5	20,2
HRWT10G03W	10	G3/8"	20,0	9,0	20,1	20,0	22,0	58,9	4,5	21,6
HRWT10G04W	10	G1/2"	20,0	12,5	20,1	20,0	26,0	62,4	4,5	24,9
HRWT12G03W	12	G3/8"	23,0	9,0	24,7	23,0	26,0	68,4	4,5	33,1

HCJ-R

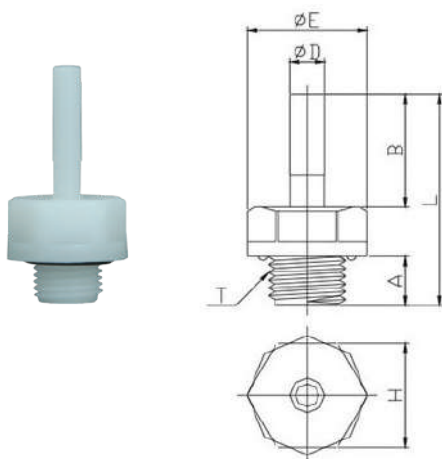
Stem adapter BSPT



CODE	ØD	T	A	B	ØE	H	L	GR.
HCJ04R01W	4	R1/8"	9,1	18,0	14,4	13	33,1	1,8
HCJ04R02W	4	R1/4"	13,1	18,0	18,5	17	37,1	3,5
HCJ06R01W	6	R1/8"	9,1	19,5	14,4	13	34,6	2,0
HCJ06R02W	6	R1/4"	13,1	19,5	18,5	17	38,6	3,7
HCJ08R01W	8	R1/8"	9,1	21,0	14,4	13	36,1	2,2
HCJ08R02W	8	R1/4"	13,1	21,0	18,5	17	40,1	3,8
HCJ08R03W	8	R3/8"	13,5	21,0	23,0	21	40,5	5,3
HCJ10R02W	10	R1/4"	13,1	24,0	18,5	17	43,1	4,5
HCJ10R03W	10	R3/8"	13,5	24,0	23,0	21	44,0	6,1
HCJ10R04W	10	R1/2"	16,5	24,0	26,5	24	47,0	9,7
HCJ12R03W	12	R3/8"	13,5	28,0	23,0	21	48,0	6,8
HCJ12R04W	12	R1/2"	16,5	28,0	26,5	24	51,0	10,2

HCJ-G

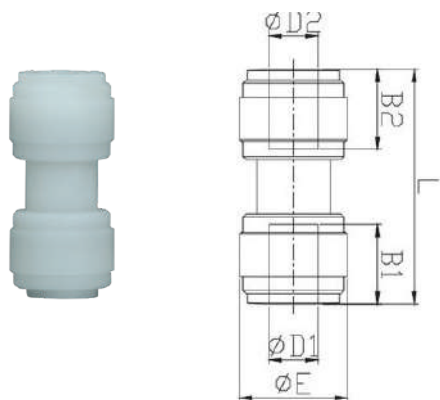
Stem adapter BSPP



CODE	ØD	T	A	B	ØE	H	L	GR.
HCJ04G01W	4	G1/8"	6,0	18,0	16,6	15	32,5	2,7
HCJ04G02W	4	G1/4"	8,5	18,0	20,5	18	35,0	4,2
HCJ06G01W	6	G1/8"	6,0	19,5	16,6	15	34,0	2,8
HCJ06G02W	6	G1/4"	8,5	19,5	20,5	18	36,5	4,3
HCJ08G01W	8	G1/8"	6,0	21,0	16,6	15	35,5	3,0
HCJ08G02W	8	G1/4"	8,5	21,0	20,5	18	38,0	4,6
HCJ08G03W	8	G3/8"	9,0	21,0	24,2	22	38,5	6,2
HCJ10G02W	10	G1/4"	8,5	24,0	20,5	18	41,0	5,2
HCJ10G03W	10	G3/8"	9,0	24,0	24,2	22	41,5	6,8
HCJ10G04W	10	G1/2"	12,5	24,0	28,5	26	45,0	10,7
HCJ12G03W	12	G3/8"	9,0	28,0	24,2	22	45,5	7,3
HCJ12G04W	12	G1/2"	12,5	28,0	28,5	26	49,0	11,2
HCJ15G04W	15	G1/2"	12,5	36,0	28,8	26	57,0	13,8

HUC

Union connector

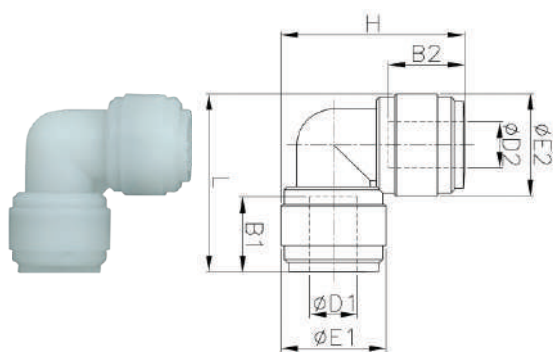


CODE	ØD1	ØD2	B1	B2	ØE	L	GR.
HUC0404W	4	4	14,7	14,7	13,2	31,8	3,8
HUC0606W	6	6	16,1	16,1	15,0	35,2	4,7
HUC0808W	8	8	17,5	17,5	17,6	38,2	6,9
HUC1010W	10	10	20,1	20,1	20,0	42,7	9,2
HUC1212W	12	12	24,7	24,7	23,0	52,4	14,4
HUC1515W	15	15	29,4	29,4	28,0	61,8	23,4
HUC2222W	22	22	33,8	33,8	35,5	70,6	37,7

HUC0604W	6	4	16,1	14,7	15,0	35,0	5,0
HUC0605W	6	5	16,1	14,9	15,0	35,1	5,0
HUC0806W	8	6	17,5	16,1	17,6	37,8	7,1
HUC1006W	10	6	20,1	16,1	20,0	42,0	9,8
HUC1008W	10	8	20,1	17,5	20,0	42,4	9,6
HUC1210W	12	10	24,7	20,1	23,0	51,7	15,0

HUL

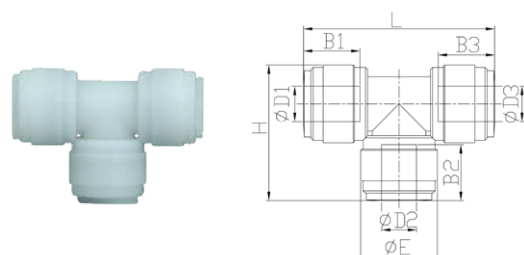
Union elbow



CODE	ØD1	ØD2	B1	B2	ØE1	ØE2	L	H	GR.
HUL0404W	4	4	14,7	14,7	13,2	13,2	24,5	24,5	3,9
HUL0606W	6	6	16,1	16,1	15,0	15,0	27,6	27,6	5,1
HUL0808W	8	8	17,5	17,5	17,6	17,6	30,7	30,7	7,6
HUL1010W	10	10	20,1	20,1	20,0	20,0	35,8	35,8	10,2
HUL1212W	12	12	24,7	24,7	23,0	23,0	43,2	43,2	16,4
HUL1515W	15	15	29,4	29,4	28,0	28,0	52,2	52,2	27,4
HUL2222W	22	22	33,8	33,8	35,5	35,5	63,9	63,9	46,8
HUL0804W	8	4	17,5	14,7	17,6	13,2	28,3	29,7	5,9
HUL0806W	8	6	17,5	16,1	17,6	17,6	30,7	30,3	7,7
HUL1006W	10	6	20,1	16,1	23,0	17,6	37,8	36,1	12,6
HUL1008W	10	8	20,1	17,5	20,0	20,0	35,8	35,5	10,2
HUL1206W	12	6	24,7	16,1	23,0	17,6	38,5	36,1	12,0
HUL1208W	12	8	24,7	17,5	23,0	17,6	38,5	36,5	11,9
HUL1210W	12	10	24,7	20,1	23,0	23,0	43,2	42,5	17,3

HUT

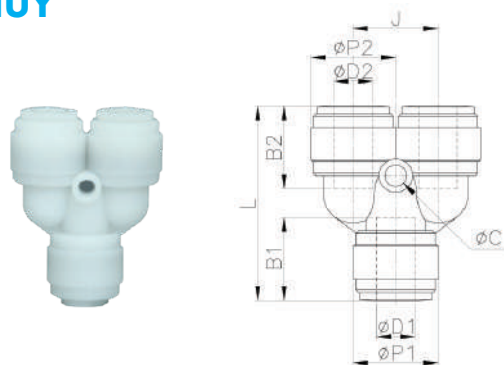
Union tee



CODE	ØD1	ØD2	ØD3	B1	B2	B3	ØE	H	L	GR.
HUT0404W	4	4	4	14,7	14,7	14,7	13,2	24,5	35,8	5,8
HUT0606W	6	6	6	16,1	16,1	16,1	15,0	27,6	40,2	7,3
HUT0808W	8	8	8	17,5	17,5	17,5	17,6	30,7	43,8	10,6
HUT1010W	10	10	10	20,1	20,1	20,1	20,0	35,8	51,6	14,6
HUT1212W	12	12	12	24,7	24,7	24,7	23,0	43,2	63,4	23,2
HUT1515W	15	15	15	29,4	29,4	29,4	28,0	52,2	76,4	38,2
HUT2222W	22	22	22	33,8	33,8	33,8	35,5	63,9	92,3	64,0
HUT100610W	10	6	10	20,1	16,1	20,1	15,0	35,1	51,6	15,3
HUT100806W	10	8	6	20,1	17,5	16,1	17,6	35,1	51,3	15,6
HUT121012W	12	10	12	24,7	20,1	24,7	20,0	42,5	63,4	24,2
HUT221222W	22	12	22	33,8	24,7	33,8	23,0	55,8	83,0	50,3
HUT221522W	22	15	22	33,8	29,4	33,8	28,0	61,0	87,0	57,1

HUY

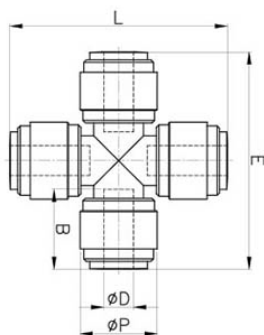
Union Y



CODE	ØD1	ØD2	B1	B2	ØP1	ØP2	L	J	ØC	GR.
HUY0404W	4	4	14,7	14,7	13,8	13,8	33,7	13,5	3,3	6,7
HUY0606W	6	6	16,1	16,1	15,5	15,5	38,8	15,5	3,3	9,2
HUY0808W	8	8	17,5	17,5	17,6	17,6	41,0	17,6	4,5	11,6
HUY1010W	10	10	20,1	20,1	20,0	20,0	46,2	20,0	4,5	16,0
HUY1212W	12	12	24,7	24,7	23,0	23,0	56,4	23,0	4,5	26,3
HUY1008W	10	8	20,1	17,5	20,0	20,0	45,9	20,0	4,5	16,8

HZA

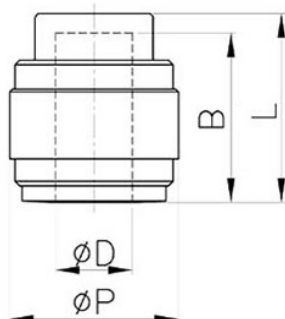
Cross junction



CODE	ØD	ØP	L	E	B	GR.
HZA0606W	6	15,5	43,8	43,8	16,1	9,7

HPF

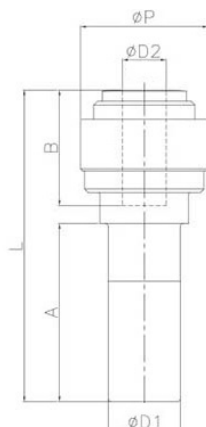
Female plug



CODE	ØD	ØP	L	B	GR.
HPF06W	6	15,5	18,9	16,1	2,8
HPF08W	8	17,6	19,5	17,5	3,6
HPF10W	10	20,0	22,1	20,1	4,7
HPF12W	12	23,0	26,7	24,7	7,3
HPF15W	15	28,0	32,1	29,4	12,6
HPF22W	22	35,5	36,6	33,8	20,6

HGJ

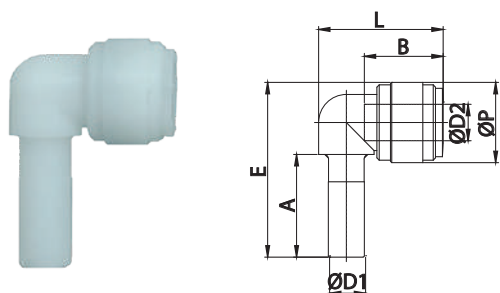
Reducer



CODE	ØD1	ØD2	ØP	L	A	B	GR.
HGJ0604W	6	4	13,2	36,7	21,0	14,7	2,4
HGJ0804W	8	4	15,5	40,4	22,5	14,7	3,7
HGJ0806W	8	6	15,5	40,6	22,5	16,1	3,5
HGJ0810W	8	10	20,0	44,9	22,5	20,1	5,4
HGJ1006W	10	6	17,6	43,4	24,8	16,1	5,2
HGJ1008W	10	8	17,6	43,8	24,8	17,5	5,1
HGJ1208W	12	8	20,0	51,3	29,5	17,5	7,3
HGJ1210W	12	10	20,0	51,6	29,5	20,1	6,9
HGJ1510W	15	10	20,0	61,0	35,0	20,1	12,0
HGJ1512W	15	12	23,6	61,7	35,0	24,7	11,3

HLJ

Union elbow tube with stem

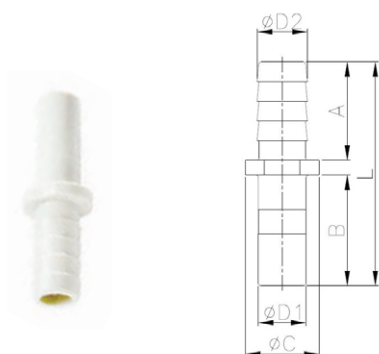


CODE	ØD1	ØD2	ØP	A	B	E	L	GR.
HLJ0404W	4	4	13,2	18,0	14,7	30,1	21,9	2,5
HLJ0606W	6	6	15,5	21,0	16,1	34,8	25,1	3,7
HLJ0808W	8	8	17,6	22,5	17,5	38,3	27,7	5,3
HLJ1010W	10	10	20,0	24,8	20,1	43,2	31,3	7,4
HLJ1212W	12	12	23,6	29,5	24,7	51,2	39,0	12,6
HLJ1515W	15	15	28,0	35,0	29,4	61,3	48,5	21,7

HLJ0608W	6	8	17,6	21,0	17,5	36,8	26,0	4,7
HLJ1006W	10	6	20,0	24,8	16,1	43,2	30,6	7,8
HLJ1008W	10	8	20,0	24,8	17,5	43,2	31,0	8,2

HCJB

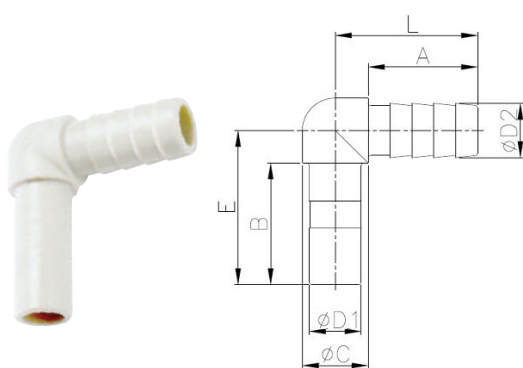
Tube barb connector



CODE	ØD1	ØD2	ØC	L	A	B	GR.
HCJB0604W	6	4	11,4	38,2	18,0	17,2	-
HCJB0606W	6	6	11,4	38,2	18,0	17,2	-
HCJB0806W	8	6	12,2	40,0	18,0	19,0	-
HCJB1006W	10	6	14,7	43,5	18,0	22,5	2,1
HCJB1008W	10	8	14,7	43,5	18,0	22,5	2,3

HLJB

Elbow tube barb connector

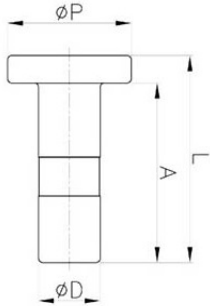


CODE	ØD1	ØD2	ØC	L	E	A	B	GR.
HLJB1006W	10	6	12,0	24,0	28,5	18,0	22,5	3,2
HLJB1008W	10	8	12,0	24,0	28,5	18,0	22,5	3,4



HPP

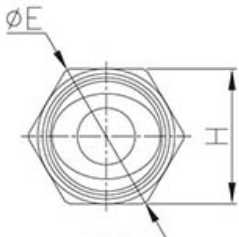
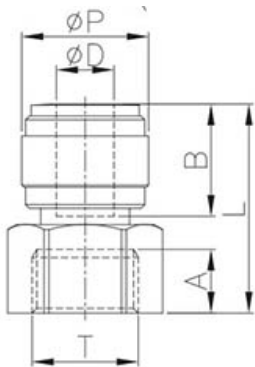
Male plug



CODE	ØD	ØP	L	A	GR.
HPP04W	4	13	22,5	19,0	0,8
HPP06W	6	13	24,5	21,0	1,1
HPP08W	8	16	26,5	23,0	1,8
HPP10W	10	18	30,0	26,0	2,7
HPP12W	12	21	34,0	30,0	4,0
HPP15W	15	25	40,0	36,0	6,4
HPP22W	22	33	45,5	41,0	12,2

HCF-UNF

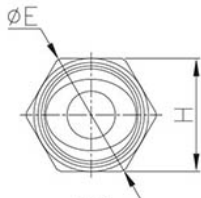
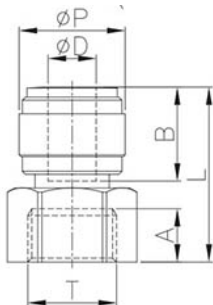
Female adapter UNF



CODE	ØD	T (UNF)	ØP	L	A	B	H	ØE	GR.
HCF06-UNF7/16-20W	6	7/16-20	17,6	30,1	9,5	16,1	17	19	6,5
HCF08-UNF7/16-20W	8	7/16-20	17,6	30,5	9,5	17,5	17	19	6,5
HCF10-UNF7/16-20W	10	7/16-20	20,0	33,1	9,5	20,1	17	19	7,5

HCF-UNS

Female adapter UNS



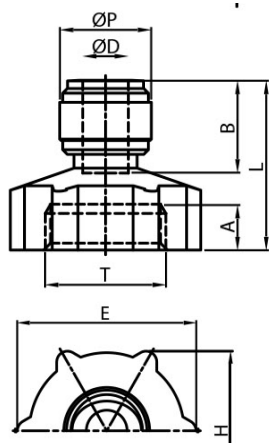
CODE	ØD	T (UNF)	ØP	L	A	B	H	ØE	GR.
HCF06-UNS7/16-24W	6	7/16-24	17,6	27,1	6,7	16,1	17	19	6,1
HCF08-UNS7/16-24W	8	7/16-24	17,6	27,5	6,7	17,5	17	19	6,1

HCF-NH

Female adapter NH



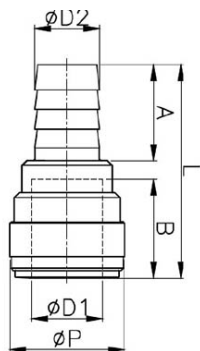
Brass thread



CODE	ØD	T (NH)	ØP	L	A	B	H	ØE	GR.
HCF06-NH06W	6	3/4	15,5	34,2	10,0	16,1	36,7	41,6	34,9
HCF08-NH06W	8	3/4	20,0	36,6	10,0	17,5	36,7	41,6	36,5
HCF10-NH06W	10	3/4	20,0	36,9	10,0	20,1	36,7	41,6	38,1

HCBB

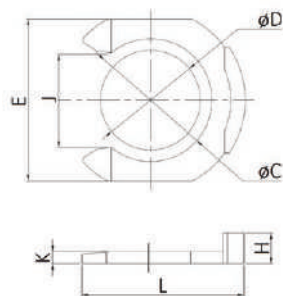
Barb connector



CODE	ØD1	ØD2	ØP	L	A	B	GR.
HCBB1210W	12	10	23,0	46,9	20,0	24,7	8,5
HCBB15-1/2W	15	1/2	28,0	54,2	22,3	29,4	14,0
HCBB22-1/2W	22	1/2	35,7	58,8	22,3	33,8	22,1
HCBB22-3/4W	22	3/4	35,7	66,5	30,0	33,8	25,7

HCP

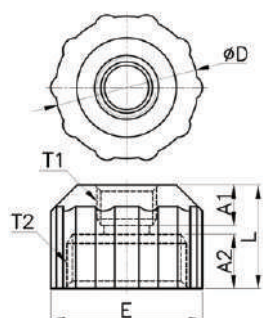
Black locking Clip



CODE	ØD	ØC	E	L	H	J	K	GR.
HCP04-5/32BK	04 - 5/32	6,2	10,2	11,0	2,8	4,3	1,1	0,09
HCP05-3/16BK	05 - 3/16	6,2	10,2	11,0	2,8	4,3	1,1	0,09
HCP06-1/4BK	06 - 1/4	8,0	11,6	11,6	3,1	6,4	1,3	0,12
HCP08-5/16BK	08 - 5/16	9,6	13,5	13,9	3,3	7,3	1,4	0,16
HCP10-3/8BK	10 - 3/8	11,8	16,0	16,4	3,4	9,2	1,4	0,23
HCP12-1/2BK	12 - 1/2	14,4	19,0	19,0	3,6	11,1	1,4	0,30
HCP15	15	17,0	22,5	22,6	3,6	13,1	1,4	0,45
HCP22	22	24,0	30,0	29,3	3,8	19,1	1,9	0,84

HUFF

Threaded reducer



CODE	T1	T2	ØD	A1	A2	L	E	GR.
HUFFG02-G06G	G1/4"	G3/4"	31,5	9,5	12,0	23,0	33,5	15,6
HUFFG03-G06G	G3/8"	G3/4"	31,5	9,5	12,0	23,0	33,5	14,5

PUSH-ON FITTINGS

POLYPROPYLENE

PLUS

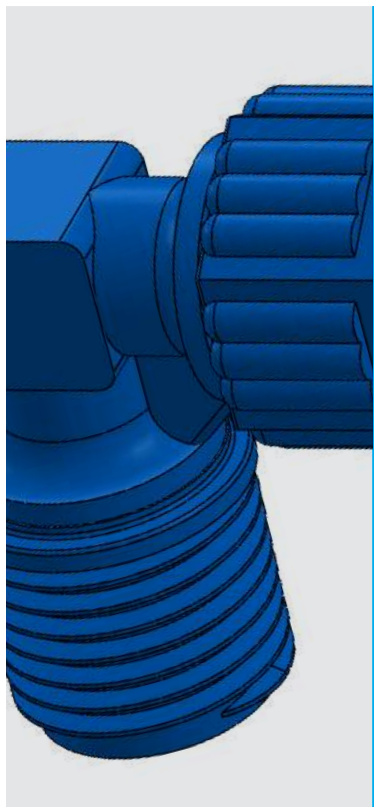
**GREAT GRIPPING SYSTEM WITH
THE LOCKING NUT**

**EASY TO BE USED AND EXTREMELY
STRONG**

**SUITABLE FOR FOOD & WATER
CONTACT**

HIGH CHEMICAL RESISTANCE

					
p. 186 / 2105	p. 186 / 2110	p. 186 / 2115	p. 187 / 2130	p. 187 / 2135	p. 187 / 2140
					
p. 187 / 2150	p. 188 / 2155	p. 188 / 2160	p. 188 / 2165	p. 188 / 2230	p. 189 / 2105N
					
p. 189 / 2110N	p. 189 / 2115N	p. 189 / 2135N	p. 190 / 2140N	p. 190 / 2155N	p. 190 / 2160N
					
p. 190 / 2165N					



+4°C ÷ +90°C
Subject to applications



Up to 14 Bar at 20°C



Compressed air, water and fluids
suitable with construction materials



Taper gas BSPT ISO 7
from R1/8" to R3/4"



Polyurethane, Polyethylene,
Polyamide



Body: Fiberglass reinforced
polypropylene

Lock nut: Fiberglass reinforced
polypropylene



Products in compliance with
the directive 2002/95/EC

RoHS2

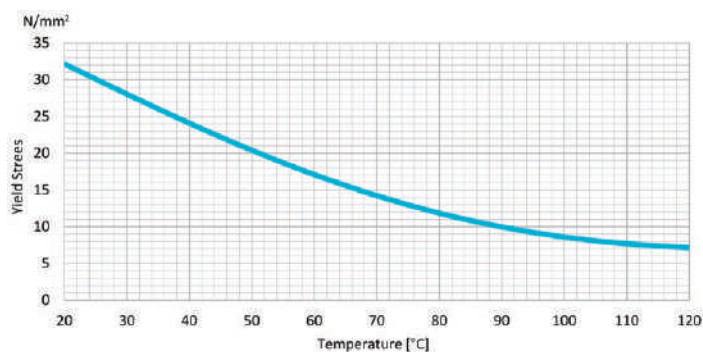
Products in compliance with
the directive 2011/65/EU



PRECAUTIONS

- The products are made in plastic and it's necessary to use teflon coating over the thread for installation in order and to prevent air leakage.
Be sure to prevent excessive torque when screwing the fittings.
- To connect the tube, insert the tube to the end and tight the cap before use.
- Cut the pressed part of the tube before connection to reuse the released tube

YIELD STRESS OF PP AS A FUNCTION OF TEMPERATURE



RECOMMENDED TIGHTENING TORQUE

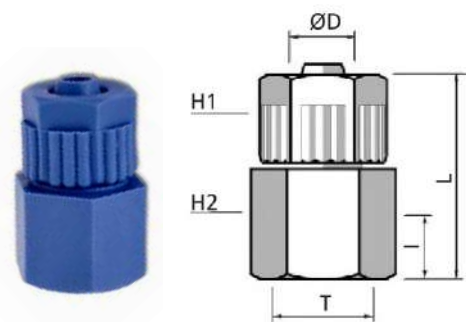
THREAD SIZE	NM	FT LB
1/8	0,01	0,01
1/4	0,3	0,2
3/8	1	1
1/2	2	2
3/4	5	4
1	8	6

MEASURES BARB

Ø	MM	Ø	MM
Ø6	6,2	Ø1/4	6,2
Ø8	7,2	Ø5/16	7,2
Ø10	9,2	Ø3/8	9,2
Ø12	12	Ø1/2	12

2105

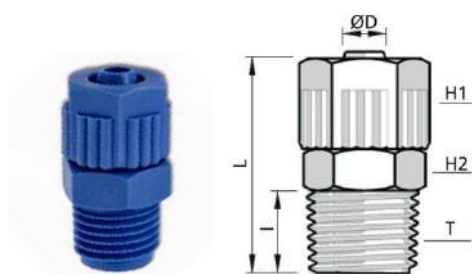
Female connector BSPT thread



CODE	ØD	T	I	L	H1	H2	GR.
2105TR186	6/4	R1/8"	10,0	26,3	14	14	3,0
2105TR146	6/4	R1/4"	11,0	28,0	14	17	3,0
2105TR188	8/5,5	R1/8"	9,5	26,3	14	14	3,0
2105TR148	8/5,5	R1/4"	11,0	28,0	14	17	4,0
2105TR388	8/5,5	R3/8"	11,2	30,5	14	22	5,0
2105TR128	8/5,5	R1/2"	13,5	32,5	14	26	6,0
2105TR1410	10/7	R1/4"	10,0	32,0	17	17	6,0
2105TR3810	10/7	R3/8"	11,0	33,0	17	22	7,0
2105TR1210	10/7	R1/2"	13,8	35,5	17	26	7,0

2110

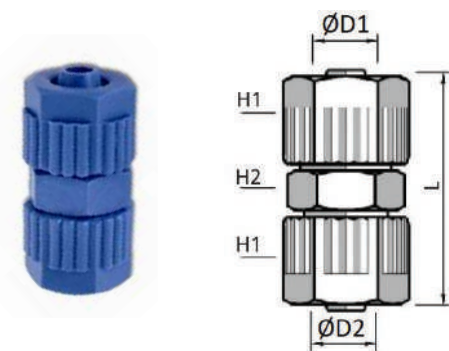
Male connector BSPT thread



CODE	ØD	T	I	L	H1	H2	GR.
2110TR186	6/4	R1/8"	8,0	27,0	14	13	3,0
2110TR146	6/4	R1/4"	10,5	30,0	14	15	3,0
2110TR386	6/4	R3/8"	10,5	27,0	14	18	4,5
2110TR126	6/4	R1/2"	13,0	31,5	14	22	6,0
2110TR346	6/4	R3/4"	9,0	23,0	14	27	8,0
2110TR188	8/5,5	R1/8"	8,0	27,0	14	13	3,0
2110TR148	8/5,5	R1/4"	10,5	30,0	14	15	3,0
2110TR388	8/5,5	R3/8"	10,5	31,5	14	18	4,0
2110TR128	8/5,5	R1/2"	13,0	34,0	14	22	5,0
2110TR348	8/5,5	R3/4"	9,0	27,5	14	27	8,0
2110TR1410	10/7	R1/4"	10,5	36,0	17	17	4,0
2110TR3810	10/7	R3/8"	10,5	36,0	17	17	5,0
2110TR1210	10/7	R1/2"	12,0	39,0	17	22	6,0
2110TR3410	10/7	R3/4"	13,0	40,0	17	27	6,0
2110TR1412	12/9	R1/4"	10,5	34,0	19	14	6,0
2110TR3812	12/9	R3/8"	10,5	36,0	19	18	7,0
2110TR1212	12/9	R1/2"	12,5	37,0	19	22	7,0
2110TR3412	12/9	R3/4"	13,0	34,0	19	27	8,0

2115

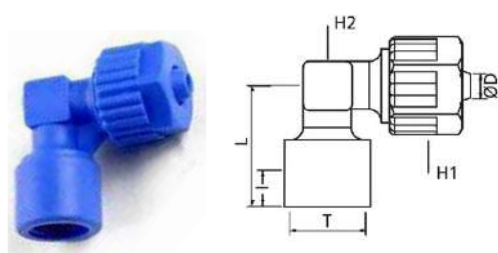
Union connector



CODE	ØD	L	H1	H2	GR.
2115TR6	6/4	32,5	14	14	4,0
2115TR8	8/5,5	32,5	14	14	4,0
2115TR12	12/9	40,6	19	18	8,0
2115TR86	8/5,5-6/4	32,5	14	14	4,0

2130

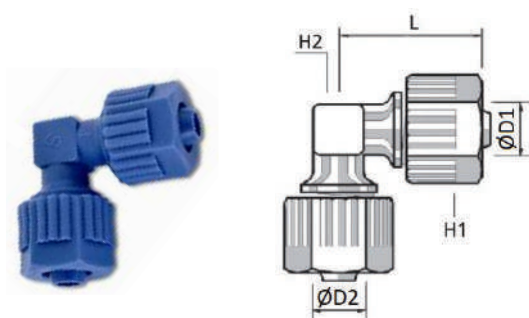
Female elbow BSPT thread



CODE	ØD	T	I	L	H1	H2	GR.
2130TR186	6/4	R1/8"	10,5	19,5	14	9	5,0
2130TR146	6/4	R1/4"	12,3	22,5	14	9	5,0
2130TR148	8/5,5	R1/4"	12,3	22,5	14	9	6,0

2135

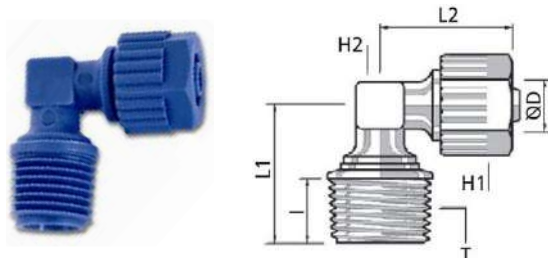
Union elbow



CODE	ØD	L	H1	H2	GR.
2135TR6	6/4	23,3	14	8	4,0
2135TR8	8/5,5	23,5	14	8	4,0
2135TR12	12/9	32,0	19	15	10,0
2135TR86	8/6	23,3	14	8	4,39

2140

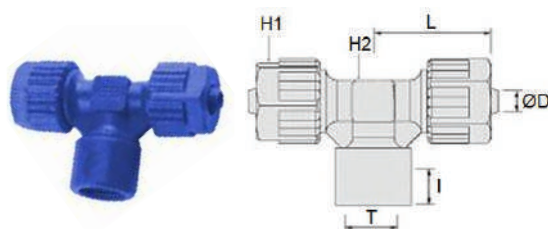
Male elbow BSPT thread



CODE	ØD	T	I	L1	L2	H1	H2	GR.
2140TR186	6/4	R1/8"	8,0	18,5	22,5	14	8	2,0
2140TR146	6/4	R1/4"	10,0	23,0	22,5	14	8	3,0
2140TR188	8/5,5	R1/8"	8,5	18,5	23,0	14	8	3,0
2140TR148	8/5,5	R1/4"	11,0	23,0	23,0	14	8	3,0
2140TR388	8/5,5	R3/8"	11,0	23,5	23,0	14	8	5,0
2140TR1412	12/9	R1/4"	10,0	24,0	33,0	19	15	7,0
2140TR3812	12/9	R3/8"	10,0	24,5	33,0	19	15	6,0
2140TR1212	12/9	R1/2"	13,0	28,5	33,0	19	15	9,0

2150

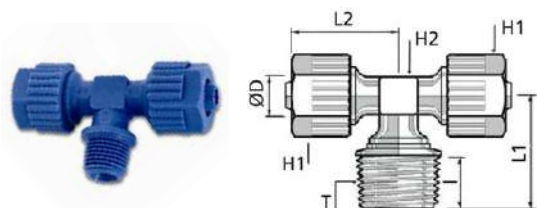
Female tee BSPT thread



CODE	ØD	T	I	L	H1	H2	GR.
2150TR186	6,2	R1/8"	10,2	23,3	14	8	5,82
2150TR148	7,2	R1/4"	12,5	23,3	14	8	5,82

2155

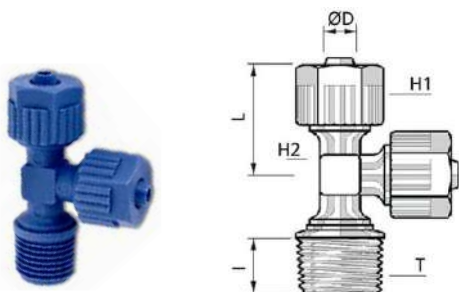
Male tee BSPT thread



CODE	ØD	T	I	L1	L2	H1	H2	GR.
2155TR186	6/4	R1/8"	9,0	19,0	23,3	14	8	6,0
2155TR146	6/4	R1/4"	11,0	21,0	23,3	14	8	6,0
2155TR188	8/5,5	R1/8"	9,0	19,0	23,3	14	8	5,0
2155TR148	8/5,5	R1/4"	11,0	21,0	23,3	14	8	6,0
2155TR388	8/5,5	R3/8"	11,0	21,0	23,3	14	8	7,0
2155TR1412	12/9	R1/4"	11,0	21,0	23,3	14	8	12,0
2155TR3812	12/9	R3/8"	10,7	24,5	33,5	19	15	14,0
2155TR1212	12/9	R1/2"	15,0	28,5	33,0	19	15	15,0

2160

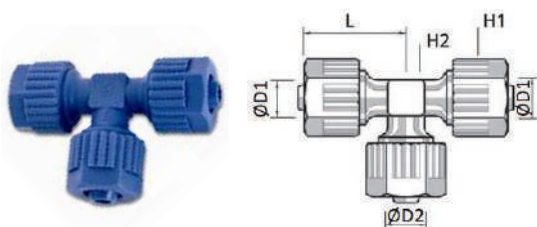
Lateral male tee BSPT thread



CODE	ØD	T	I	L	H1	H2	GR.
2160TR186	6/4	R1/8"	8,5	23,3	14	8	5,0
2160TR146	6/4	R1/4"	11,0	23,3	14	8	5,0
2160TR188	8/5,5	R1/8"	8,5	23,3	14	8	5,0
2160TR148	8/5,5	R1/4"	11,0	23,3	14	8	5,0
2160TR388	8/5,5	R3/8"	10,0	23,3	14	8	7,0
2160TR1412	12/9	R1/4"	10,0	33,0	19	15	12,0
2160TR3812	12/9	R3/8"	11,0	33,0	19	15	14,0
2160TR1212	12/9	R1/2"	15,0	33,0	19	15	15,0

2165

Union tee connector



CODE	ØD	L	H1	H2	GR.
2165TR6	6/4	22,0	14	8	7,0
2165TR8	8/5,5	22,0	14	8	5,0
2165TR12	12/9	32,0	19	14	14,0
2165TR68	6/8	46,8	-	-	6,48
2165TR86	8/6	46,8	-	-	6,41

2230

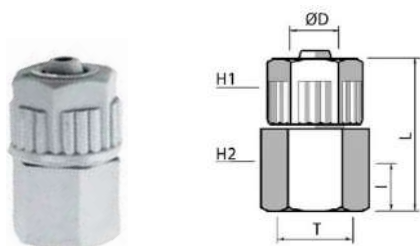
Locking nut



CODE	ØD	ØC	H	GR.
2230TR6	6/4	6,2	14	1,0
2230TR8	8/5,5	8,1	14	2,0
2230TR10	10/7	10,2	17	3,0
2230TR12	12/9	12,8	19	4,0

2105N

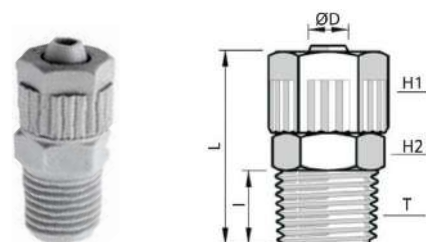
Female connector NPT thread



CODE	T	ØD	I	L	H1	H2	GR.
2105TRN1814	N1/8"	1/4	13,8	35,5	14	14	3,11
2105TRN18516	N1/8"	5/16	13,8	35,5	14	14	3,1
2105TRN14516	N1/4"	5/16	13,8	35,5	14	17	3,85
2105TRN1438	N1/4"	3/8	13,8	35,5	17	17	5,09
2105TRN3838	N3/8"	3/8	-	-	17	22	6,19
2105TRN1238	N1/2"	3/8	-	-	17	26	7,92

2110N

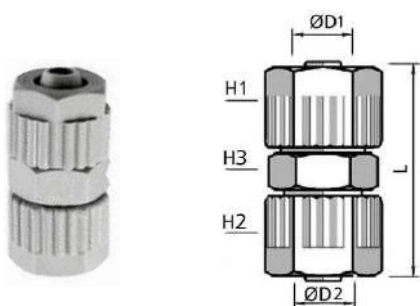
Male connector NPT thread



CODE	T	ØD	I	L	H1	H2	GR.
2110TRN1814	N1/8"	1/4	8,5	29,5	14	13	2,56
2110TRN1414	N1/4"	1/4	13	34	14	15	3,33
2110TRN1214	N1/2"	1/4	18	-	14	22	6,76
2110TRN18516	N1/8"	5/16	8,5	29,3	14	13	2,71
2110TRN14516	N1/4"	5/16	13	34	14	15	3,07
2110TRN38516	N3/8"	5/16	13	35	14	18	4,17
2110TRN1438	N1/4"	3/8	13	37,5	17	15	4,39
2110TRN3838	N3/8"	3/8	13	38,5	17	18	5,55
2110TRN1238	N1/2"	3/8	18	43,5	17	22	7,63
2110TRN3438	N3/4"	3/8	-	-	17	27	10,12
2110TRN1412	N1/4"	1/2	13	39	19	15	5,11
2110TRN3812	N3/8"	1/2	13	40	19	18	6,18
2110TRN1212	N1/2"	1/2	18	45	19	22	8,34

2115N

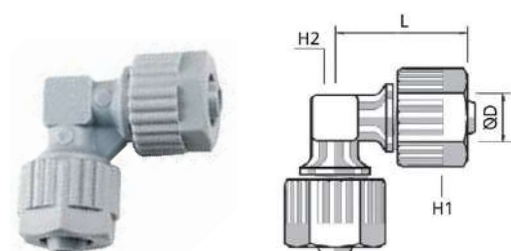
Union connector NPT thread



CODE	ØD1	ØD2	T	L	H1	H2	H3	GR.
2115TRN14	1/4	1/4	R1/4"	32,5	14	14	14	4,14
2115TRN516	5/16	5/16	R5/16"	32,5	14	14	14	4,09
2115TRN12	1/2	1/2	R1/2"	40,6	19	19	18	8,26

2135N

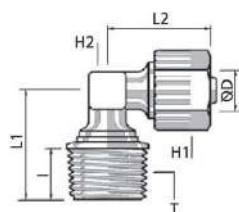
Union elbow connector



CODE	ØD	L	H1	H2	GR.
2135TRN14	1/4	23,3	14	8	4,48
2135TRN516	5/16	23,5	14	8	4,35

2140N

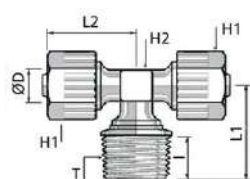
Male elbow NPT thread



CODE	T	ØD	I	L1	L2	H1	H2	GR.
2140TRN1814	N1/8"	1/4	10	19,5	22,5	14	8	3,2
2140TRN1414	N1/4"	1/4	12,5	23,3	22,5	14	8	3,83
2140TRN18516	N1/8"	5/16	12,5	23,5	22,5	14	8	3,13
2140TRN14516	N1/4"	5/16	10	19,5	22,5	14	8	3,81

2155N

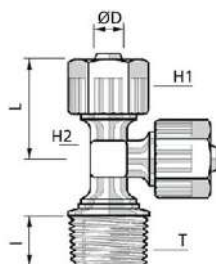
Male tee NPT thread



CODE	T	ØD	I	L1	L2	H1	H2	GR.
2155TRN1814	N1/8"	1/4	10	20,3	23,3	14	8	5,25
2155TRN1414	N1/4"	1/4	12,5	25	23,3	14	8	5,74
2155TRN18516	N1/8"	5/16	10	20,3	23,3	14	8	5,17
2155TRN14516	N1/4"	5/16	12,5	25	23,3	14	8	5,81
2155TRN3812	N3/8"	1/2	14	30,2	67	19	15	13,06
2155TRN1212	N1/2"	1/2	17,5	33	67	19	15	13,79

2160N

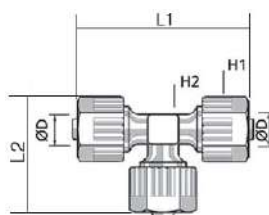
Lateral male tee NPT thread



CODE	T	ØD	I	L	H1	H2	GR.
2160TRN1814	N1/8"	1/4	-	-	14	8	5,28
2160TRN1414	N1/4"	1/4	-	-	14	8	5,88
2160TRN18516	N1/8"	5/16	10	21,9	14	8	5,04
2160TRN14516	N1/4"	5/16	13,3	22,3	14	8	5,62
2160TRN1812	N1/8"	1/2	-	-	14	8	12,42

2165N

Union tee



CODE	ØD	L1	L2	H1	H2	GR.
2165TRN14	1/4	46,7	27,4	14	-	6,52
2165TRN516	5/16	46,7	27,4	14	-	6,29
2165TRN12	1/2	67,0	40,4	19	-	14,84

BARB CONNECTORS

HDPE

PLUS

**ACCESSORIES FOR HIGHER GRIPPING
AND SAFETY AVAILABLE**

HIGH DENSITY POLYETHYLENE



p. 259 / **5030PE**



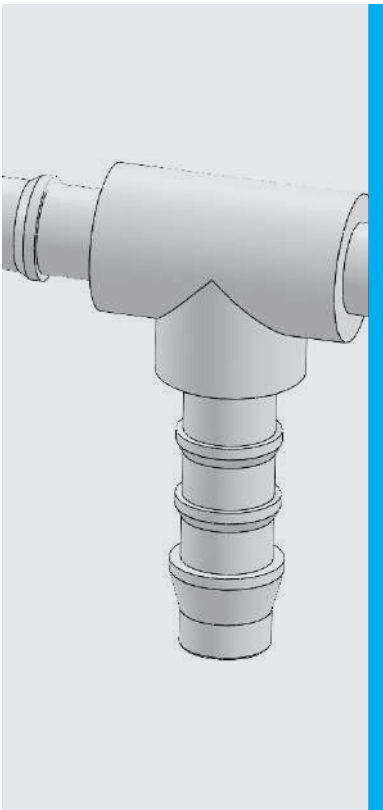
p. 260 / **5040PE**



p. 260 / **5050PE**



p. 260 / **5060PE**



0°C ÷ +70°C
subject to application



up to 14 Bar at 20°C
depending from the used tube



Compressed air, water and fluids
suitable with construction materials



Polyurethane, silicon and soft PVC



High density polyethylene (HDPE)

FEATURES

Suitable for food.



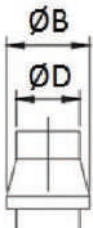
Products in compliance with
the directive 2002/95/EC

RoHS2

Products in compliance with
the directive 2011/65/EU

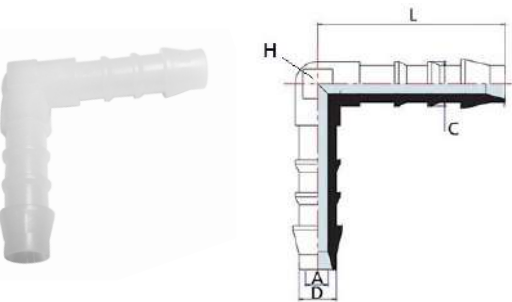
DIAMETER OF THE BARB

ØD	Ø 4 mm	Ø 6 mm	Ø 8 mm
ØB (mm)	5,2 mm	8,0 mm	10,0 mm



5030PE

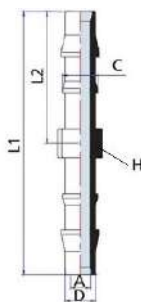
Union elbow barb connector



CODE	ØD	ØA	ØB	ØC	L	H	GR.
5030PE4	4 - 5/32"	2,8	5,2	4,8	22,0	6,3	0,5
5030PE6	6 - 1/4"	4,0	8,0	7,5	31,2	7,8	1,4
5030PE8	8 - 5/16"	5,7	10,0	9,2	36,0	10,3	2,4

5040PE

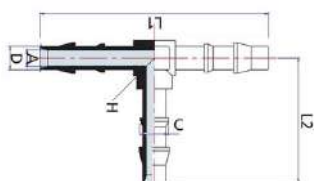
Union barb connector



CODE	ØD	ØA	ØB	ØC	L1	L2	H	GR.
5040PE4	4 - 5/32"	2,8	5,2	4,8	36	18	6,0	0,4
5040PE6	6 - 1/4"	4,0	8,0	7,5	53,6	26,8	6,0	1
5040PE8	8 - 5/16"	5,7	10,0	9,2	59,0	29,5	10,0	1,7

5050PE

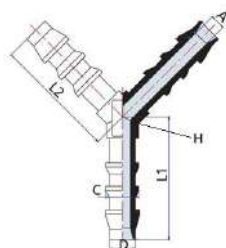
Union tee barb connector



CODE	ØD	ØA	ØB	ØC	L1	L2	H	GR.
5050PE4	4 - 5/32"	2,8	5,2	4,8	39,0	21,2	6,3	0,7
5050PE6	6 - 1/4"	4,0	8,0	7,5	56,4	31,0	7,8	1,8
5050PE8	8 - 5/16"	5,7	10,0	9,2	61,5	33,0	10,3	2,7

5060PE

Y barb connector



CODE	ØD	ØA	ØB	ØC	L1	L2	H	GR.
5060PE4	4 - 5/32"	2,8	5,2	4,8	20,0	20,0	6,3	0,6
5060PE6	6 - 1/4"	4,0	8,0	7,5	29,0	29,0	7,8	1,8
5060PE8	8 - 5/16"	5,7	10,0	9,2	31,2	31,2	10,3	2,7

BARB CONNECTORS

NYLON

PLUS

EASY CONNECTION

SUITABLE FOR FOOD

**ACCESSORIES FOR HIGHER GRIPPING
AND SAFETY AVAILABLE**

**STRONG AND DURABLE HIGH IMPACT
RESISTANT**

					
p. 264 / 5005	p. 264 / 5010	p. 265 / 5020	p. 266 / 5025	p. 266 / 5030	p. 267 / 5035
					
p. 267 / 5040	p. 267 / 5045	p. 268 / 5050	p. 268 / 5055	p. 268 / 5060	p. 269 / 5070
					
p. 269 / 5007	p. 270 / 5015	p. 270 / 5022	p. 271 / 5027	p. 271 / 5032	p. 272 / 5037
					
p. 272 / 5042	p. 272 / 5047	p. 273 / 5052	p. 273 / 5057	p. 273 / 5062	



-20°C ÷ +110°C
subject to applications



up to 14 Bar at 20°C
depending from the used tube



Compressed air, water and food
fluids suitable with construction
materials



Taper gas BSPT ISO 7
from R1/8" to R1"
NPT from N1/8" to N3/4"



Plastic, silicon, rubber
or soft PVC tubes



Nylon 66

FEATURES

- The products are made in plastic and it's
necessary to use teflon tape over the thread for
installation in order and to prevent air leakage.
Be sure to prevent excessive torque when
screwing the fittings.



Products in compliance with
the directive 2002/95/EC

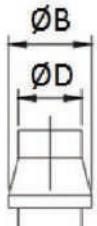
RoHS2

Products in compliance with
the directive 2011/65/EU



DIAMETER OF THE BARB

ØD	Ø 4 mm	Ø 5 mm	Ø 6 mm	Ø 8mm	Ø 10 mm	Ø 12 mm	Ø 14 mm	Ø 16 mm	Ø 19 mm
ØB (mm)	5,2 mm	6,3 mm	8,0 mm	10,0 mm	12,0 mm	14,0 mm	16,2 mm	18,2 mm	21,0 mm
ØD	Ø 5/32"	3/16"	1/4"	5/16"	3/8"	1/2"	5/8"	3/4"	
ØB (mm)	5,3 mm	6,3 mm	8,0 mm	9,8 mm	12,0 mm	13,8 mm	17,5 mm	21,0 mm	

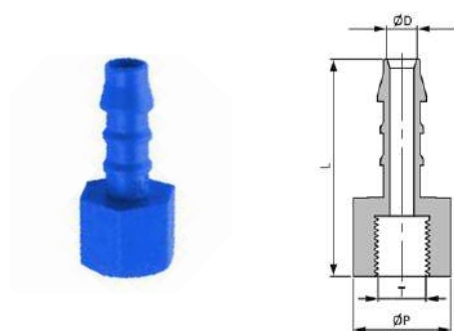


RECOMMENDED TIGHTENING TORQUE

THREAD SIZE	NM	FT LB
1/8	0,1	0,07
1/4	0,8	0,6
3/8	4	3
1/2	6	4
3/4	8	6
1	10	7

5005

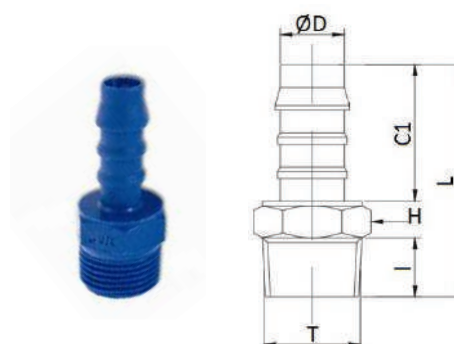
Female barb connector BSPT thread



CODE	T	ØD	ØP	L	GR.
5005TR185	R1/8"	5	14	34,4	2,0
5005TR145	R1/4"	5	17	35,2	2,7
5005TR385	R3/8"	5	22	36,5	4,57
5005TR125	R1/2"	5	26	38,7	6,6
5005TR186	R1/8"	6	14	36,3	2,15
5005TR146	R1/4"	6	17	37,2	2,9
5005TR386	R3/8"	6	22	38,3	4,8
5005TR126	R1/2"	6	26	40,8	7,0
5005TR188	R1/8"	8	14	39,4	2,5
5005TR388	R3/8"	8	22	40,4	5,0
5005TR128	R1/2"	8	26	42,7	7,1
5005TR1410	R1/4"	10	17	41,5	3,6
5005TR3810	R3/8"	10	22	42,3	5,4
5005TR1210	R1/2"	10	26	45,0	7,5
5005TR1412	R1/4"	12	17	42,4	4,1
5005TR3812	R3/8"	12	22	43,3	6,2
5005TR1212	R1/2"	12	26	46,0	8,0
5005TR3814	R3/8"	14	22	45,0	6,9
5005TR1214	R1/2"	14	26	47,3	8,7
5005TR1216	R1/2"	16	26	48,1	9,0
5005TR1219	R1/2"	19	26	48,8	9,5

5010

Male barb connector BSPT thread

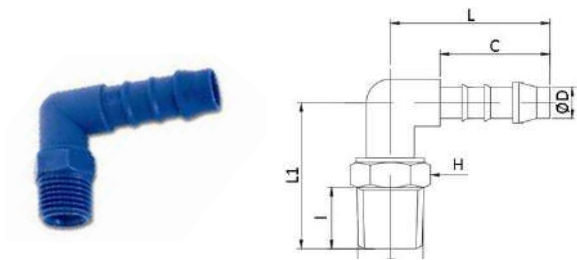


CODE	T	ØD	I	C1	L	H	GR.
5010TR184	R1/8"	4	8,0	16,0	30,5	11	1,0
5010TR144	R1/4"	4	10,0	16,0	33,5	14	1,2
5010TR185	R1/8"	5	8,0	21,0	35,5	11	1,0
5010TR145	R1/4"	5	10,0	21,0	38,5	14	1,0
5010TR125	R1/2"	5	10,0	21,0	41,4	22	1,0
5010TR186	R1/8"	6	8,0	23,0	37,5	11	1,0
5010TR146	R1/4"	6	10,0	23,0	40,5	14	2,0
5010TR386	R3/8"	6	10,0	23,0	40,5	17	3,0
5010TR126	R1/2"	6	12,5	23,0	44,0	22	6,0
5010TR346	R3/4"	6	14,5	23,0	46,0	22	8,2
5010TR188	R1/8"	8	8,0	25,0	39,5	11	2,0
5010TR148	R1/4"	8	10,0	25,0	42,5	14	2,0
5010TR388	R3/8"	8	10,0	25,0	42,5	17	3,0
5010TR128	R1/2"	8	12,5	25,0	46,0	22	6,0
5010TR348	R3/4"	8	12,5	25,0	47,1	27	6,0
5010TR1410	R1/4"	10	10,0	27,0	44,0	14	1,0
5010TR3810	R3/8"	10	10,0	27,0	44,0	17	4,0
5010TR1210	R1/2"	10	12,5	27,0	48,0	22	6,0
5010TR3410	R3/4"	10	14,5	27,0	50,0	27	9,1
5010TR1412	R1/4"	12	10,0	28,0	45,0	14	4,0
5010TR3812	R3/4"	12	10,0	28,0	45,0	17	4,0
5010TR1212	R1/2"	12	12,5	28,0	49,0	22	7,0
5010TR3412	R3/4"	12	14,5	28,0	51,0	27	9,2
5010TR3814	R3/8"	14	10,0	29,5	47,0	17	6,0
5010TR1214	R1/2"	14	12,5	29,5	50,5	22	7,0
5010TR3414	R3/4"	14	14,5	29,5	52,5	27	9,8
5010TR1216	R1/2"	16	12,5	30,0	51,0	22	8,0
5010TR3416	R3/4"	16	14,5	30,0	53,0	27	10,0
5010TR1219	R1/2"	19	12,5	31,0	52,0	22	9,0
5010TR3419	R3/4"	19	14,5	31,0	54,0	27	15,0
5010TR119	R1"	19	21,0	31,0	62,0	27	18,8



5020

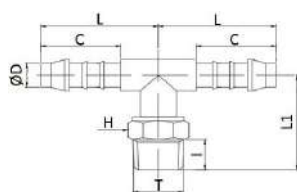
Male elbow barb connector BSPT thread



CODE	T	ØD	I	C	L	L1	H	GR.
5020TR184	R1/8"	4	8,0	16,0	22,5	21,0	11	1,0
5020TR144	R1/4"	4	10,0	16,0	22,5	24,0	14	1,0
5020TR185	R1/8"	5	8,0	21,0	28,0	24,0	11	1,0
5020TR145	R1/4"	5	10,0	21,0	28,0	26,0	14	3,0
5020TR125	R1/2"	5	13,0	21,0	28,0	30,0	22	6,0
5020TR186	R1/8"	6	8,5	23,5	31,5	23,5	11	1,0
5020TR146	R1/4"	6	10,0	23,0	31,0	26,0	14	3,0
5020TR386	R3/8"	6	10,5	23,0	31,0	26,0	17	3,0
5020TR126	R1/2"	6	13,0	23,5	31,5	30,0	22	7,0
5020TR188	R1/8"	8	8,0	25,0	36,0	26,0	11	3,0
5020TR148	R1/4"	8	10,0	25,0	36,0	28,0	14	3,0
5020TR388	R3/8"	8	10,5	25,0	36,0	28,0	17	5,0
5020TR128	R1/2"	8	13,0	25,0	36,0	30,5	22	7,0
5020TR1410	R1/4"	10	10,0	27,0	39,0	28,0	14	4,0
5020TR3810	R3/8"	10	10,5	27,0	39,0	28,0	17	6,0
5020TR1210	R1/2"	10	13,0	27,0	39,0	30,5	22	8,0
5020TR3410	R3/4"	10	14,5	27,0	39,0	33,5	27	9,9
5020TR1412	R1/4"	12	10,0	28,0	41,0	28,0	14	7,0
5020TR3812	R3/8"	12	10,5	28,0	41,0	28,0	17	8,0
5020TR1212	R1/2"	12	13,0	28,0	41,0	32,0	22	9,0
5020TR3412	R3/4"	12	14,5	28,0	41,0	34,0	27	12,0
5020TR3814	R3/8"	14	10,5	29,5	42,5	31,5	17	9,0
5020TR1214	R1/2"	14	13,0	29,5	42,5	34,0	22	11,0
5020TR3414	R3/4"	14	14,5	29,5	42,5	37,5	27	14,4
5020TR1216	R1/2"	16	12,5	30,0	44,0	36,0	22	13,0
5020TR3416	R3/4"	16	14,5	30,0	44,0	39,0	27	14,0
5020TR1219	R1/2"	19	12,5	31,0	45,0	36,0	22	15,0
5020TR3419	R3/4"	19	15,0	31,0	45,0	38,0	27	16,6

5025

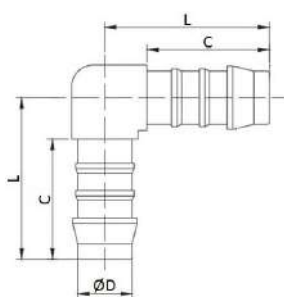
Male tee barb connector BSPT thread



CODE	T	ØD	I	C	L	L1	H	GR.
5025TR184	R1/8"	4	8,0	16,0	19,5	18,5	11	1,0
5025TR144	R1/4"	4	10,5	16,0	19,5	21,5	14	2,5
5025TR185	R1/8"	5	8,0	21,0	25,0	19,5	11	1,0
5025TR145	R1/4"	5	10,5	21,0	25,0	22,5	14	3,0
5025TR186	R1/8"	6	8,5	23,5	31,5	23,5	11	1,0
5025TR146	R1/4"	6	10,5	23,0	27,5	23,0	14	3,0
5025TR386	R3/8"	6	13,0	23,0	27,5	23,0	17	4,1
5025TR126	R1/2"	6	12,5	23,0	27,5	27,0	22	7,1
5025TR188	R1/8"	8	8,0	25,0	30,5	21,5	11	3,0
5025TR148	R1/4"	8	10,5	25,0	30,5	24,5	14	5,0
5025TR388	R3/8"	8	10,5	25,0	30,5	24,5	17	6,0
5025TR128	R1/2"	8	13,0	25,0	30,5	28,5	22	7,5
5025TR1410	R1/4"	10	10,0	27,0	39,0	28,0	14	6,4
5025TR3810	R3/8"	10	10,5	27,0	39,0	28,0	17	7,3
5025TR1210	R1/2"	10	12,5	27,0	39,0	30,5	22	9,6
5025TR3410	R3/4"	10	13,0	27,0	39,0	31,5	27	11,8
5025TR1412	R1/4"	12	10,0	28,0	41,0	28,0	14	15,0
5025TR3812	R3/8"	12	10,5	28,0	41,0	28,0	17	9,0
5025TR1212	R1/2"	12	13,0	28,0	41,0	31,5	22	12,6
5025TR3412	R3/4"	12	13,0	28,0	41,0	31,5	27	14,3
5025TR3814	R3/8"	14	10,5	29,5	42,5	31,5	17	12,8
5025TR1214	R1/2"	14	12,5	29,5	42,5	34,0	22	15,0
5025TR3414	R3/4"	14	13,0	30,0	42,5	35,0	27	17,9
5025TR1216	R1/2"	16	12,5	30,0	44,0	36,0	22	15,0
5025TR3416	R3/4"	16	13,5	30,0	44,0	37,0	27	18,6
5025TR1219	R1/2"	19	12,5	31,0	45,0	36,0	22	19,6
5025TR3419	R3/4"	19	13,5	31,0	45,0	36,0	27	21,6

5030

Union elbow barb connector

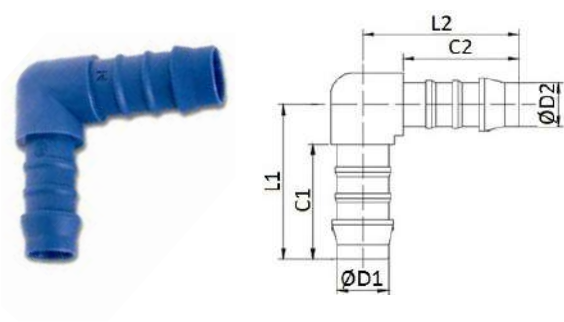


CODE	ØD	C	L	GR.
5030TR4	4	16,0	23,0	1,0
5030TR5	5	21,0	28,5	1,2
5030TR6	6	23,0	31,5	1,5
5030TR8	8	25,0	36,5	3,0
5030TR10	10	27,0	39,0	4,0
5030TR12	12	28,0	40,0	7,0
5030TR14	14	29,5	42,5	9,0
5030TR16	16	30,0	44,0	11,0
5030TR19	19	31,0	45,0	13,0



5035

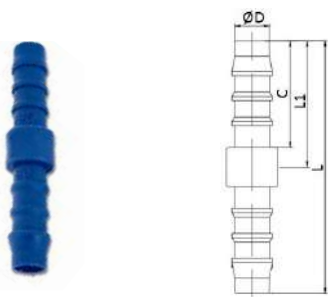
Reduced union elbow barb connector



CODE	ØD1	ØD2	C1	L1	C2	L2	GR.
5035TR54	5	4	21,0	28,5	16,0	23,0	1,0
5035TR64	6	4	21,0	35,5	16,0	29,0	1,0
5035TR65	6	5	23,0	31,5	21,0	28,5	1,5
5035TR86	8	6	25,0	36,5	23,0	31,5	2,0
5035TR106	10	6	27,0	39,0	23,0	31,5	3,8
5035TR108	10	8	27,0	39,0	25,0	36,5	4,0
5035TR1210	12	10	28,0	40,0	27,0	39,0	7,0
5035TR1412	14	12	29,5	42,5	28,0	40,0	9,0
5035TR1614	16	14	30,0	44,0	29,5	42,5	11,0
5035TR1916	19	16	31,0	45,0	30,0	44,0	14,0

5040

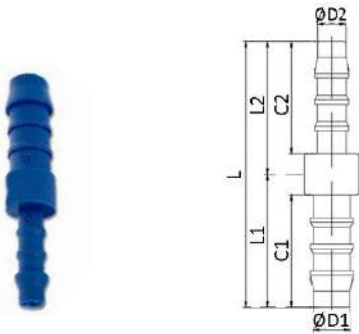
Union barb connector



CODE	ØD	C	L1	L	GR.
5040TR4	4	16,0	18,0	36,0	1,0
5040TR5	5	21,0	23,5	47,0	1,2
5040TR6	6	23,0	26,0	52,0	1,5
5040TR8	8	25,0	29,0	58,0	2,0
5040TR10	10	27,0	31,5	63,0	3,0
5040TR12	12	28,0	33,0	66,0	4,0
5040TR14	14	29,5	35,5	71,0	7,5
5040TR16	16	30,0	36,0	72,0	9,0
5040TR19	19	31,0	37,0	74,0	11,0

5045

Reduced union elbow barb connector



CODE	ØD1	ØD2	C1	L1	C2	L2	L	GR.
5045TR54	5	4	21,0	23,5	16,0	18,0	41,5	1,0
5045TR64	6	4	23,0	26,0	16,0	18,0	44,0	1,0
5045TR65	6	5	23,0	26,0	21,0	23,5	49,5	1,0
5045TR85	8	5	25,0	29,5	21,0	23,5	53,0	2,0
5045TR86	8	6	25,0	29,0	23,0	26,0	55,0	3,0
5045TR106	10	6	27,0	31,5	23,0	26,0	57,5	3,0
5045TR108	10	8	27,0	31,5	25,0	29,0	60,5	3,0
5045TR128	12	8	28,0	33,0	25,0	29,0	62,0	3,0
5045TR1210	12	10	28,0	33,0	27,0	31,5	64,5	5,0
5045TR1410	14	10	29,5	35,5	27,0	31,5	67,0	6,0
5045TR1412	14	12	29,5	35,5	28,0	33,0	68,5	7,0
5045TR1612	16	12	30,0	36,0	28,0	33,0	69,0	7,0
5045TR1614	16	14	30,0	36,0	29,5	35,5	71,5	8,0
5045TR1914	19	14	31,0	37,0	29,5	35,5	72,5	10,0
5045TR1916	19	16	31,0	37,0	30,0	36,0	73,0	10,0

5050

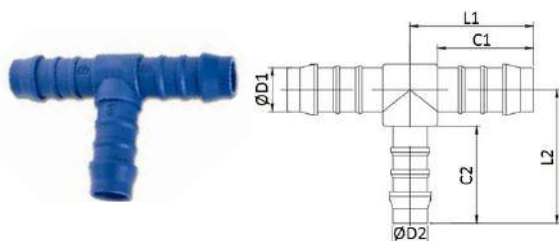
Union tee barb connector



CODE	ØD	C1	L1	C2	L2	GR.
5050TR4	4	16,0	19,0	16,0	20,5	1,0
5050TR5	5	21,0	25,0	21,0	26,5	1,0
5050TR6	6	23,0	27,5	23,0	29,0	1,0
5050TR8	8	25,0	30,5	25,0	32,5	3,0
5050TR10	10	27,0	33,0	27,0	33,5	5,0
5050TR12	12	28,0	34,0	28,0	37,5	8,0
5050TR14	14	29,5	42,5	29,5	42,5	12,0
5050TR16	16	30,0	44,0	30,0	44,0	13,0
5050TR19	19	31,0	45,0	31,0	45,0	17,0

5055

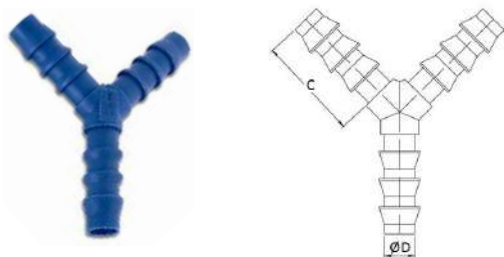
Reduced union tee barb connector



CODE	ØD1	ØD2	C1	L1	C2	L2	GR.
5055TR54	5	4	21,0	25,0	16,0	21,5	1,0
5055TR65	6	5	23,0	27,5	21,0	27,0	2,0
5055TR86	8	6	25,0	30,5	23,0	30,5	3,0
5055TR108	10	8	27,0	33,0	25,0	34,0	4,0
5055TR1210	12	10	28,0	34,5	27,0	36,5	7,0
5055TR1412	14	12	29,5	37,0	28,0	38,5	11,0
5055TR1614	16	14	30,0	39,0	29,5	41,5	13,0
5055TR1916	19	16	31,0	41,0	30,0	43,0	17,0

5060

Y barb connector

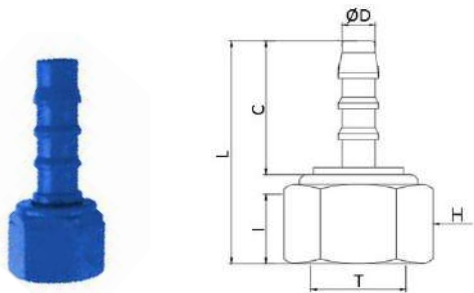


CODE	ØD	C	GR.
5060TR4	4	16,5	1,0
5060TR6	6	23,5	1,5
5060TR8	8	25,5	3,0
5060TR10	10	24,0	5,0
5060TR17	17	24,0	7,0



5070

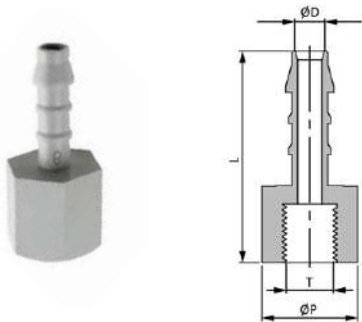
Swivel female barb connector BSPT thread



CODE	T	ØD	I	C	L	H	GR.
5070TR184	R1/8"	4	10,0	16,0	27,5	13	1,0
5070TR144	R1/4"	4	14,2	16,0	31,7	16	1,0
5070TR185	R1/8"	5	10,0	21,0	32,5	13	1,2
5070TR145	R1/4"	5	15,0	21,0	36,7	16	1,5
5070TR385	R3/8"	5	14,5	21,0	40,2	20	2,0
5070TR146	R1/4"	6	15,0	23,0	38,7	16	2,0
5070TR386	R3/8"	6	14,5	23,0	39,0	20	3,0
5070TR126	R1/2"	6	17,0	23,0	41,5	24	6,0
5070TR148	R1/4"	8	14,2	25,0	40,2	16	2,0
5070TR388	R3/8"	8	14,5	25,0	41,0	20	2,0
5070TR128	R1/2"	8	17,0	25,0	43,5	24	3,0
5070TR348	R3/4"	8	17,0	25,0	43,5	30	6,0
5070TR3810	R3/8"	10	14,5	27,0	43,0	20	4,0
5070TR1210	R1/2"	10	17,0	27,0	45,5	24	6,0
5070TR3410	R3/4"	10	17,0	27,0	45,5	30	9,0
5070TR1212	R1/2"	12	17,0	28,0	46,5	24	8,0
5070TR3412	R3/4"	12	17,0	28,0	46,5	30	10,0
5070TR1214	R1/2"	14	17,0	29,5	48,0	24	8,0
5070TR3414	R3/4"	14	17,0	29,5	48,0	30	10,0
5070TR3416	R3/4"	16	17,0	30,0	48,5	30	11,0
5070TR3419	R3/4"	19	17,0	31,0	49,5	30	16,0

5007

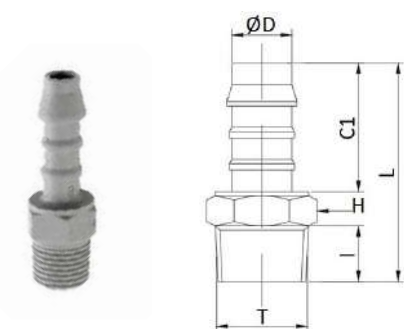
Female barb connector NPT thread



CODE	T	ØD	ØP	L	GR.
5007TR1814	N1/8"	1/4"	14	36,7	2,24
5007TR1414	N1/4"	1/4"	17	40,1	3,5
5007TR3814	N3/8"	1/4"	22	40,0	5,29
5007TR1214	N1/2"	1/4"	27	43,7	7,95
5007TR18516	N1/8"	5/16"	14	38,9	2,5
5007TR14516	N1/4"	5/16"	17	41,8	3,58
5007TR38516	N3/8"	5/16"	22	42,0	5,6
5007TR12516	N1/2"	5/16"	27	45,0	8,1
5007TR1438	N1/4"	3/8"	17	44,1	4,09
5007TR3838	N3/8"	3/8"	22	43,9	6,1
5007TR1238	N1/2"	3/8"	27	47,2	8,7
5007TR1412	N1/4"	1/2"	17	44,7	4,64
5007TR3812	N3/8"	1/2"	22	45,2	6,55
5007TR1212	N1/2"	1/2"	27	48,8	9,2
5007TR1258	N1/2"	5/8"	27	50,4	10,1
5007TR1234	N1/2"	3/4"	27	51,7	10,6

5015

Male barb connector NPT thread



CODE	T	ØD	I	C1	L	H	GR.
5015TR18532	N1/8"	5/32"	8,0	16,0	30,5	11	1,0
5015TR18316	N1/8"	3/16"	9,0	21,0	20,5	11	1,0
5015TR14316	N1/4"	3/16"	13,0	21,0	40,5	14	1,0
5015TR1814	N1/8"	1/4"	9,0	23,0	32,5	17	1,5
5015TR14	N1/4"	1/4"	13,0	23,0	42,5	22	1,0
5015TR3814	N3/8"	1/4"	13,0	23,0	44,0	11	3,0
5015TR1214	N1/2"	1/4"	18,0	23,0	49,0	14	6,4
5015TR18516	N1/8"	5/16"	9,0	25,0	34,5	17	1,8
5015TR14516	N1/4"	5/16"	13,0	25,0	44,5	22	2,7
5015TR38516	N3/8"	5/16"	13,0	25,0	46,0	14	4,1
5015TR12516	N1/2"	5/16"	18,0	25,0	51,0	22	6,8
5015TR1438	N1/4"	3/8"	13,0	27,0	46,5	22	3,0
5015TR38	N3/8"	3/8"	13,0	27,0	48,0	27	5,0
5015TR1238	N1/2"	3/8"	18,0	27,0	53,0	22	7,4
5015TR3438	N3/4"	3/8"	19,0	27,0	54,0	27	9,8
5015TR1412	N1/4"	1/2"	13,0	28,0	47,5	22	3,5
5015TR3812	N3/8"	1/2"	13,0	28,0	49,0	17,5	5,0
5015TR12	N1/2"	1/2"	18,0	28,0	54,0	27	7,6
5015TR3412	N3/4"	1/2"	19,0	28,0	55,0	22	10,3
5015TR1258	N1/2"	5/8"	18,0	30,0	56,0	22	8,5
5015TR3458	N3/4"	5/8"	19,0	30,0	57,0	27	11,2
5015TR1234	N1/2"	3/4"	18,0	31,0	57,0	22	9,1
5015TR34	N3/4"	3/4"	19,0	31,0	58,0	27	11,9

5022

Male elbow barb connector NPT thread

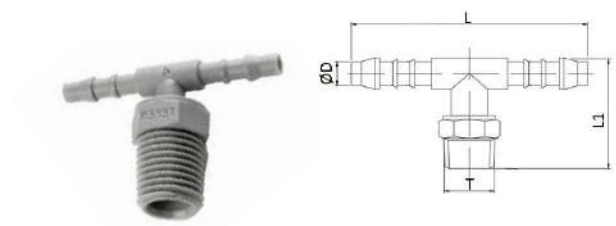


CODE	T	ØD	L	L1	GR.
5022TR18532	5/32"	N1/8"	25,7	26,0	1,58
5022TR14532	5/32"	N1/4"	25,9	31,1	2,5
5022TR18316	3/16"	N1/8"	31,8	28,6	2,0
5022TR14316	3/16"	N1/4"	33,4	31,8	-
5022TR12316	3/16"	N1/2"	41,8	31,8	-
5022TR1814	1/4"	N1/8"	35,4	29,0	2,29
5022TR1414	1/4"	N1/4"	35,5	33,7	3,3
5022TR3814	1/4"	N3/8"	35,5	33,8	4,8
5022TR1214	1/4"	N1/2"	42,2	35,5	6,7
5022TR18516	5/16"	N1/8"	41,5	32,1	3,30
5022TR14516	5/16"	N1/4"	41,2	36,7	4,25
5022TR38516	5/16"	N3/8"	41,5	36,6	5,4
5022TR12516	5/16"	N1/2"	41,5	43,1	8,7
5022TR1438	3/8"	N1/4"	45,4	37,7	4,8
5022TR3838	3/8"	N3/8"	45,3	37,5	6,2
5022TR1238	3/8"	N1/2"	45,4	44,4	7,8
5022TR3438	3/8"	N3/4"	45,4	44,0	12,4
5022TR1412	1/2"	N1/4"	48,6	39,0	-
5022TR3812	1/2"	N3/8"	48,3	28,6	7,8
5022TR1212	1/2"	N1/2"	48,7	45,2	11,1
5022TR3412	1/2"	N3/4"	48,7	45,2	14,1
5022TR1258	5/8"	N1/2"	53,8	51,5	14,4
5022TR3458	5/8"	N3/4"	53,8	51,4	17,5
5022TR1234	3/4"	N1/2"	56,6	52,8	16,1
5022TR3434	3/4"	N3/4"	56,2	53,0	18,8



5027

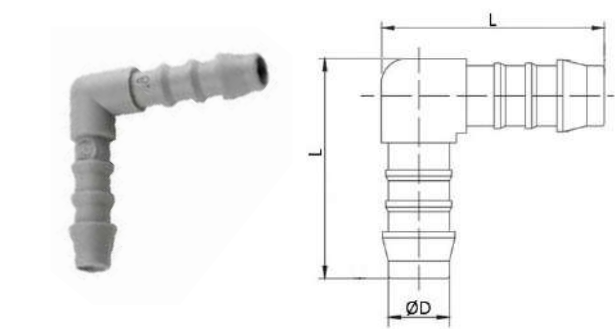
Male tee barb connector NPT thread



CODE	T	ØD	L	L1	GR.
5027TR18532	N1/8"	5/32"	45,1	26,0	1,44
5027TR14532	N1/4"	5/32"	45,1	30,7	2,69
5027TR18316	N1/8"	3/16"	56,3	28,6	2,4
5027TR14316	N1/4"	3/16"	56,3	33,4	3,34
5027TR12316	N1/2"	3/16"	56,3	39,3	7,8
5027TR1814	N1/8"	1/4"	63,0	29,4	-
5027TR1414	N1/4"	1/4"	63,0	33,8	3,86
5027TR3814	N3/8"	1/4"	63,0	33,7	6,55
5027TR1214	N1/2"	1/4"	63,0	40,3	9,57
5027TR18516	N1/8"	5/16"	72,5	32,3	4,51
5027TR14516	N1/4"	5/16"	72,5	36,8	5,46
5027TR38516	N3/8"	5/16"	72,5	36,9	6,65
5027TR12516	N1/2"	5/16"	72,5	42,8	9,68
5027TR1438	N1/4"	3/8"	78,5	38,0	5,14
5027TR3838	N3/8"	3/8"	78,5	37,7	7,78
5027TR1238	N1/2"	3/8"	78,5	44,0	10,52
5027TR3438	N3/4"	3/8"	78,5	43,8	13,91
5027TR1412	N1/4"	1/2"	82,6	39,3	8,62
5027TR3812	N3/8"	1/2"	82,6	38,8	11
5027TR1212	N1/2"	1/2"	82,6	45,5	14,44
5027TR3412	N3/4"	1/2"	82,6	45,5	20,42
5027TR1258	N1/2"	5/8"	88,4	51,5	18,28
5027TR3458	N3/4"	5/8"	88,4	51,1	21
5027TR1234	N1/2"	3/4"	90,5	53,0	16,6
5027TR3434	N3/4"	3/4"	90,5	52,5	23,02

5032

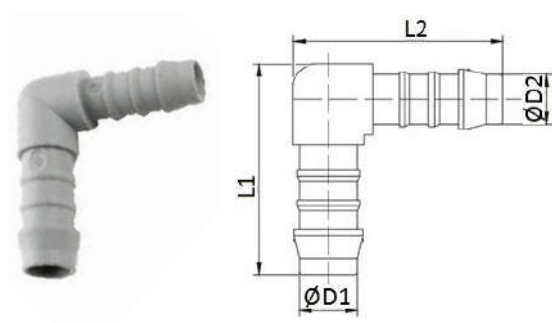
Elbow barb connector



CODE	ØD	L	GR.
5032TR532	5/32"	25,6	0,65
5032TR316	3/16"	33,2	1,19
5032TR14	1/4"	36,1	1,77
5032TR516	5/16"	41,4	3,18
5032TR38	3/8"	44,6	4,42
5032TR12	1/2"	47,6	6,7
5032TR58	5/8"	54,3	11,17
5032TR34	3/4"	56,7	13,6

5037

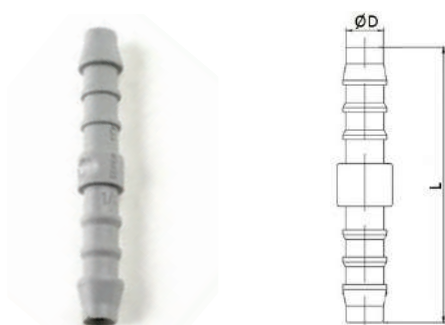
Reduced union elbow barb connector



CODE	ØD1	ØD2	L1	L2	GR.
5037TR316532	3/16"	5/32"	31,8	27,9	1,5
5037TR14316	1/4"	3/16"	35,4	34,1	2,0
5037TR51614	5/16"	1/4"	39,4	41,6	2,3
5037TR3814	3/8"	1/4"	40,2	45,3	3,8
5037TR38516	3/8"	5/16"	42,5	45,5	4,0
5037TR1238	1/2"	3/8"	45,8	48,6	6,5
5037TR3458	3/4"	5/8"	55,8	55,8	7,2

5042

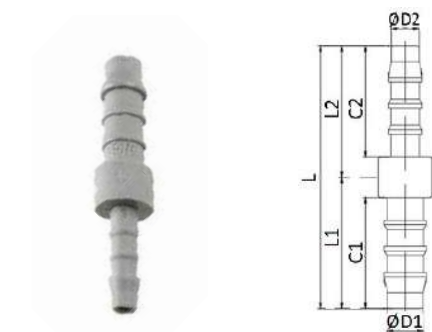
Union barb connector



CODE	ØD	L	GR.
5042TR532	5/32"	25,6	0,65
5042TR316	3/16"	33,2	1,19
5042TR14	1/4"	36,1	1,77
5042TR516	5/16"	41,4	3,18
5042TR38	3/8"	44,6	4,42
5042TR12	1/2"	47,6	6,7
5042TR58	5/8"	54,3	11,17
5042TR34	3/4"	56,7	13,6

5047

Reduced union barb connector

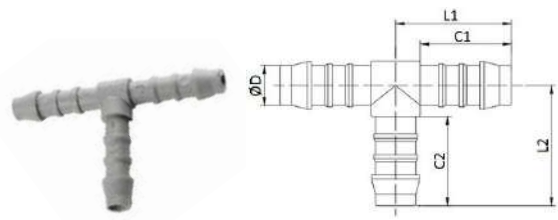


CODE	ØD1	ØD2	C1	L1	C2	L2	L	GR.
5047TR316532	3/16"	5/32"	-	-	-	-	42,2	0,62
5047TR14532	1/4"	5/32"	-	-	-	-	45,7	0,86
5047TR14316	1/4"	3/16"	23,5	26,0	21,0	23,5	49,5	1,0
5047TR516316	5/16"	3/16"	24,0	29,5	21,0	23,5	53,0	2,0
5047TR51614	5/16"	1/4"	25,0	29,0	23,0	26,0	55,0	2,1
5047TR3814	1/2"	1/4"	25,5	31,5	23,0	27,0	58,5	2,5
5047TR38516	3/8"	5/16"	27,0	31,5	25,0	29,0	60,5	2,8
5047TR12516	1/2"	5/16"	28,0	33,0	25,0	29,0	62,0	4,1
5047TR1238	1/2"	3/8"	29,5	33,0	27,0	31,5	64,5	4,6
5047TR5812	5/8"	1/2"	30,5	36,0	28,0	33,0	69,0	7,5
5047TR3458	3/4"	5/8"	31,0	37,0	30,0	37,0	74,0	10,0



5052

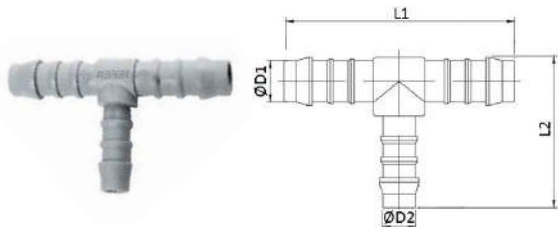
Union tee barb connector



CODE	ØD	C1	L1	C2	L2	GR.
5052TR532	5/32"	-	39,4	-	24,3	0,62
5052TR316	3/16"	21,0	25,0	21,0	27,5	1,2
5052TR14	1/4"	23,0	27,5	23,0	29,0	1,9
5052TR516	5/16"	25,0	30,5	25,0	32,5	3,2
5052TR38	3/8"	26,5	33,0	27,0	35,5	5,5
5052TR12	1/2"	28,0	34,0	28,0	37,5	9,0
5052TR58	5/8"	30,0	44,0	30,0	44,0	14,0
5052TR34	3/4"	31,0	45,0	31,0	45,0	17,0

5057

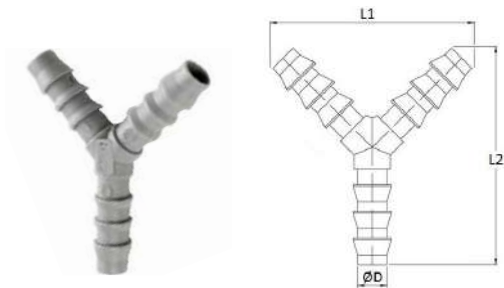
Union tee barb connector



CODE	ØD1	ØD2	L1	L2	GR.
5057TR316532	3/16"	5/32"	50,6	25,9	1,1
5057TR14316	1/4"	3/16"	55,8	32,0	1,74
5057TR51614	5/16"	1/4"	61,5	36,2	2,94
5057TR38516	3/8"	5/16"	66,5	39,3	1,1
5057TR1238	1/2"	3/8"	70,3	43,5	7,75
5057TR3458	3/4"	5/8"	84,3	55,2	16,42

5062

Union Y barb connector



CODE	ØD	L1	L2	GR.
5062TR532	5/32"	30,8	35,5	0,65
5062TR14	1/4"	44,3	50,8	2,095
5062TR516	5/16"	49,4	55,6	3,35
5062TR38	3/8"	54,9	60,8	4,93

BARB CONNECTORS

PVDF

PLUS

**FITTINGS MADE OF PVDF CAN
FUNCTION WELL, EVEN WHEN
EXPOSED TO A WIDE RANGE OF
TEMPERATURES AND HIGH CORROSIVE
CHEMICALS**

**ACCESSORIES FOR HIGHER GRIPPING
AND SAFETY AVAILABLE**



p. 278 / **5905**



p. 279 / **5910**



p. 279 / **5920**



p. 280 / **5925**



p. 281 / **5930**



p. 281 / **5935**



p. 281 / **5940**



p. 282 / **5945**



p. 282 / **5950**



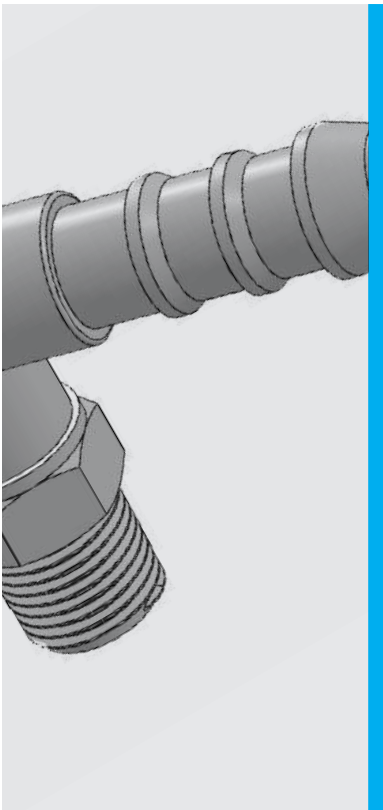
p. 282 / **5955**



p. 283 / **5960**



p. 283 / **5970**



20°C ÷ +120°C
subject to applications



up to 14 Bar at 20°C
depending from the used tube



Compressed air, water and food
fluids suitable with construction
materials



Taper gas BSPT ISO 7
from R1/8" to R1"



Polyurethane, Polyethylene,
polyamide, silicon, PTFE, FEP



Polyvinylidene fluoride (PVDF)

FEATURES

Fittings made of pvdf can function well, even
when exposed to a wide range of temperatures
and high corrosive chemicals

Available on demand with INCH tube and
NPT thread



Products in compliance with
the directive 2002/95/EC

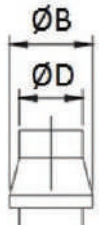
RoHS2

Products in compliance with
the directive 2011/65/EU



DIAMETER OF THE BARB

ØD	Ø 4 mm	Ø 5 mm	Ø 6 mm	Ø 8mm	Ø 10 mm	Ø 12 mm	Ø 14 mm	Ø 16 mm	Ø 19 mm
ØB (mm)	5,2 mm	6,3 mm	8,0 mm	10,0 mm	12,0 mm	14,0 mm	16,2 mm	18,2 mm	21,0 mm



PRECAUTIONS

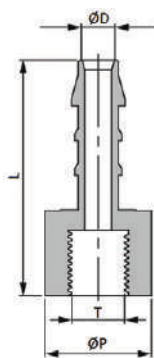
- The products are made in plastic and it's necessary to use teflon coating over the thread for installation in order and to prevent air leakage. Be sure to prevent excessive torque when screwing the fittings.
- To connect the tube, insert the tube to the end and tight the cap before use.
- Cut the pressed part of the tube before connection to reuse the released tube

**RECOMMENDED
TIGHTENING TORQUE**

THREAD SIZE	NM	FT LB
1/8	0,1	0,07
1/4	1	0,8
3/8	5	3
1/2	8	6
3/4	16	12

5905

Female hose connector BSPT thread

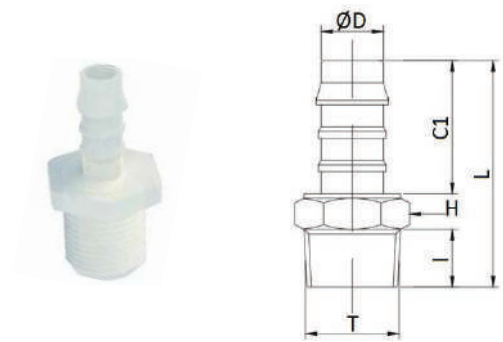


CODE	T	ØD	L	ØP	GR.
5905TR185	R1/8"	5	34,4	14	2,0
5905TR145	R1/4"	5	35,2	17	2,7
5905TR385	R3/8"	5	36,5	22	4,57
5905TR125	R1/2"	5	38,7	26	6,6
5905TR186	R1/8"	6	36,3	14	2,15
5905TR146	R1/4"	6	37,2	17	2,9
5905TR386	R3/8"	6	38,3	22	4,8
5905TR126	R1/2"	6	40,8	26	7,0
5905TR188	R1/8"	8	38,2	14	2,5
5905TR148	R1/4"	8	39,4	17	5,0
5905TR388	R3/8"	8	40,4	22	7,1
5905TR128	R1/2"	8	42,7	26	3,6
5905TR1410	R1/4"	10	41,5	17	5,4
5905TR3810	R3/8"	10	42,3	22	7,5
5905TR1210	R1/2"	10	45,0	26	4,1
5905TR1412	R1/4"	12	42,4	17	6,2
5905TR3812	R3/8"	12	43,3	22	8,0
5905TR1212	R1/2"	12	46,0	26	6,9
5905TR3814	R3/8"	14	45,0	22	8,7
5905TR1214	R1/2"	14	47,3	26	9,0
5905TR1216	R1/2"	16	48,1	26	9,5
5905TR1219	R1/2"	19	48,8	26	4,7



5910

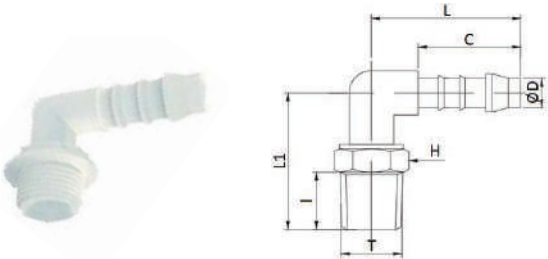
Male barb connector BSPT thread



CODE	T	ØD	I	C1	L	H	GR.
5910TR184	R1/8"	4	8,0	16,0	30,5	11	1,0
5910TR144	R1/4"	4	10,0	16,0	33,5	14	1,2
5910TR185	R1/8"	5	8,0	21,0	35,5	11	1,0
5910TR145	R1/4"	5	10,0	21,0	38,5	14	1,0
5910TR186	R1/8"	6	8,0	23,0	37,5	11	1,0
5910TR146	R1/4"	6	10,0	23,0	40,5	14	2,0
5910TR386	R3/8"	6	10,0	23,0	40,5	17	3,0
5910TR126	R1/2"	6	12,5	23,0	44,0	22	6,0
5910TR346	R3/4"	6	14,5	23,0	46,0	22	8,2
5910TR188	R1/8"	8	8,0	25,0	39,5	11	2,0
5910TR148	R1/4"	8	10,0	25,0	42,5	14	2,0
5910TR388	R3/8"	8	10,0	25,0	42,5	17	3,0
5910TR128	R1/2"	8	12,5	25,0	46,0	22	6,0
5910TR348	R3/4"	8	12,5	25,0	37,1	17	4,7
5910TR1410	R1/4"	10	10,0	27,0	44,0	14	1,0
5910TR3810	R3/8"	10	10,0	27,0	44,0	17	4,0
5910TR1210	R1/2"	10	12,5	27,0	48,0	22	6,0
5910TR3410	R3/4"	10	14,5	27,0	50,0	27	9,1
5910TR1412	R1/4"	12	10,0	28,0	45,0	14	4,0
5910TR3812	R3/8"	12	10,0	28,0	45,0	17	4,0
5910TR1212	R1/2"	12	12,5	28,0	49,0	22	7,0
5910TR3412	R3/4"	12	14,5	28,0	51,0	27	9,2
5910TR3814	R3/8"	14	10,0	29,5	47,0	17	6,0
5910TR1214	R1/2"	14	12,5	29,5	50,5	22	7,0
5910TR3414	R3/4"	14	14,5	29,5	52,5	27	9,8
5910TR1216	R1/2"	16	12,5	30,0	51,0	22	8,0
5910TR3416	R3/4"	16	14,5	30,0	53,0	27	10,0
5910TR1219	R1/2"	19	12,5	31,0	52,0	22	9,0
5910TR3419	R3/4"	19	14,5	31,0	54,0	27	15,0
5910TR119	R1"	19	21,0	31,0	62,0	27	18,8
5910TR3425	R3/4"	25	21,0	31,0	54,8	27	17,0
5910TR125	R1"	25	21,0	31,0	66,6	36	19,5

5920

Male elbow barb connector BSPT thread

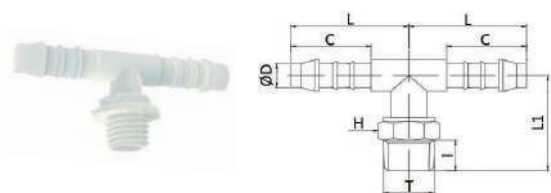


CODE	T	ØD	I	C	L	L1	H	GR.
5920TR184	R1/8"	4	8,0	16,0	22,5	21,0	11	1,0
5920TR144	R1/4"	4	10,0	16,0	22,5	24,0	14	1,0
5920TR185	R1/8"	5	8,0	21,0	28,0	24,0	11	1,0
5920TR145	R1/4"	5	10,0	21,0	28,0	26,0	14	3,0
5920TR125	R1/2"	5	13,0	21,0	28,0	30,0	22	6,0
5920TR186	R1/8"	6	8,5	23,5	31,5	23,5	11	1,0
5920TR146	R1/4"	6	10,0	23,0	31,0	26,0	14	3,0
5920TR386	R3/8"	6	10,5	23,0	31,0	26,0	17	3,0
5920TR126	R1/2"	6	13,0	23,5	31,5	30,0	22	7,0
5920TR188	R1/8"	8	8,0	25,0	36,0	26,0	11	3,0
5920TR148	R1/4"	8	10,0	25,0	36,0	28,0	14	3,0

5920TR388	R3/8"	8	10,5	25,0	36,0	28,0	17	5,0
5920TR128	R1/2"	8	13,0	25,0	36,0	30,5	22	7,0
5920TR1410	R1/4"	10	10,0	27,0	39,0	28,0	14	4,0
5920TR3810	R3/8"	10	10,5	27,0	39,0	28,0	17	6,0
5920TR1210	R1/2"	10	13,0	27,0	39,0	30,5	22	8,0
5920TR3410	R3/4"	10	14,5	27,0	39,0	33,5	27	9,9
5920TR1412	R1/4"	12	10,0	28,0	41,0	28,0	14	7,0
5920TR3812	R3/8"	12	10,5	28,0	41,0	28,0	17	8,0
5920TR1212	R1/2"	12	13,0	28,0	41,0	32,0	22	9,0
5920TR3412	R3/4"	12	14,5	28,0	41,0	34,0	27	12,0
5920TR3814	R3/8"	14	10,5	29,5	42,5	31,5	17	9,0
5920TR1214	R1/2"	14	13,0	29,5	42,5	34,0	22	11,0
5920TR3414	R3/4"	14	14,5	29,5	42,5	37,5	27	14,4
5920TR1216	R1/2"	16	12,5	30,0	44,0	36,0	22	13,0
5920TR3416	R3/4"	16	14,5	30,0	44,0	39,0	27	14,0
5920TR1219	R1/2"	19	12,5	31,0	45,0	36,0	22	15,0
5920TR3419	R3/4"	19	15,0	31,0	45,0	38,0	27	16,6

5925

Male tee barb connector BSPT thread

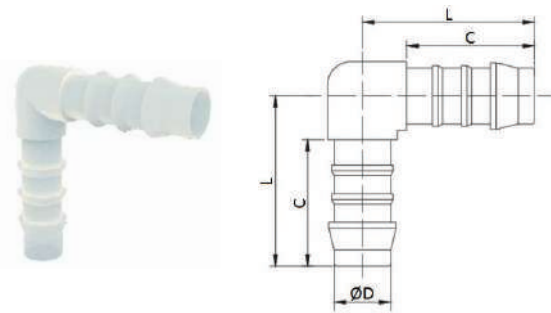


CODE	T	ØD	I	C	L	L1	H	GR.
5925TR184	R1/8"	4	8,0	16,0	19,5	18,5	11	1,0
5925TR144	R1/4"	4	10,5	16,0	19,5	21,5	14	2,5
5925TR185	R1/8"	5	8,0	21,0	25,0	19,5	11	1,0
5925TR145	R1/4"	5	10,5	21,0	25,0	22,5	14	3,0
5925TR186	R1/8"	6	8,5	23,5	31,5	23,5	11	1,0
5925TR146	R1/4"	6	10,5	23,0	27,5	23,0	14	3,0
5925TR386	R3/8"	6	13,0	23,0	27,5	23,0	17	4,1
5925TR126	R1/2"	6	12,5	23,0	27,5	27,0	22	7,1
5925TR188	R1/8"	8	8,0	25,0	30,5	21,5	11	3,0
5925TR148	R1/4"	8	10,5	25,0	30,5	24,5	14	5,0
5925TR388	R3/8"	8	10,5	25,0	30,5	24,5	17	6,0
5925TR128	R1/2"	8	13,0	25,0	30,5	28,5	22	7,5
5925TR1410	R1/4"	10	10,0	27,0	39,0	28,0	14	6,4
5925TR3810	R3/8"	10	10,5	27,0	39,0	28,0	17	7,3
5925TR1210	R1/2"	10	12,5	27,0	39,0	30,5	22	9,6
5925TR3410	R3/4"	10	13,0	27,0	39,0	31,5	27	11,8
5925TR1412	R1/4"	12	10,0	28,0	41,0	28,0	14	15,0
5925TR3812	R3/8"	12	10,5	28,0	41,0	28,0	17	9,0
5925TR1212	R1/2"	12	13,0	28,0	41,0	31,5	22	12,6
5925TR3412	R3/4"	12	13,0	28,0	41,0	31,5	27	14,3
5925TR3814	R3/8"	14	10,5	29,5	42,5	31,5	17	12,8
5925TR1214	R1/2"	14	12,5	29,5	42,5	34,0	22	15,0
5925TR3414	R3/4"	14	13,0	30,0	42,5	35,0	27	17,9
5925TR1216	R1/2"	16	12,5	30,0	44,0	36,0	22	15,0
5925TR3416	R3/4"	16	13,5	30,0	44,0	37,0	27	18,6
5925TR1219	R1/2"	19	12,5	31,0	45,0	36,0	22	19,6
5925TR3419	R3/4"	19	13,5	31,0	45,0	36,0	27	21,6



5930

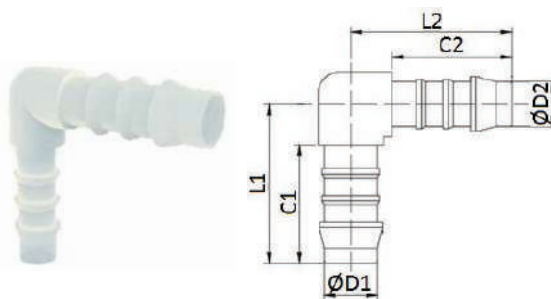
Union elbow barb connector



CODE	ØD	C	L	GR.
5930TR4	4	16,0	23,0	1,0
5930TR5	5	21,0	28,5	1,2
5930TR6	6	23,0	31,5	1,5
5930TR8	8	25,0	36,5	3,0
5930TR10	10	27,0	39,0	4,0
5930TR12	12	28,0	40,0	7,0
5930TR14	14	29,5	42,5	9,0
5930TR16	16	30,0	44,0	11,0
5930TR19	19	31,0	45,0	13,0

5935

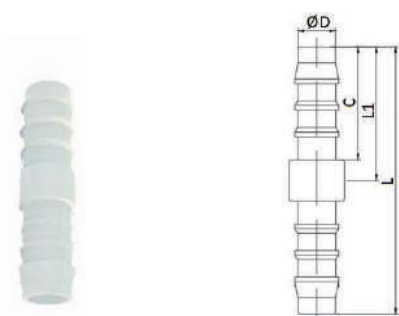
Reduced union elbow barb connector



CODE	ØD1	ØD2	C1	L1	C2	L2	GR.
5935TR54	5	4	21,0	28,5	16,0	23,0	1,0
5935TR64	6	4	21,0	35,5	-	29,0	-
5935TR65	6	5	23,0	31,5	21,0	28,5	1,5
5935TR86	8	6	25,0	36,5	23,0	31,5	2,0
5935TR106	10	6	27,0	39,0	23,0	31,5	3,8
5935TR108	10	8	27,0	39,0	25,0	36,5	4,0
5935TR1210	12	10	28,0	40,0	27,0	39,0	7,0
5935TR1412	14	12	29,5	42,5	28,0	40,0	9,0
5935TR1614	16	14	30,0	44,0	29,5	42,5	11,0
5935TR1916	19	16	31,0	45,0	30,0	44,0	14,0

5940

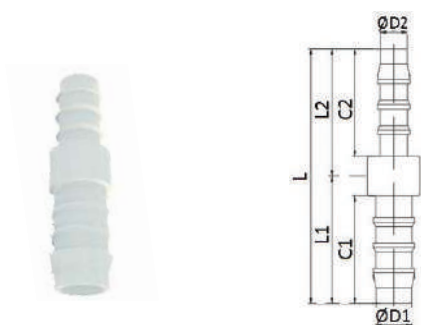
Union barb connector



CODE	ØD	C	L1	L	GR.
5940TR4	4	16,0	18,0	36,0	1,0
5940TR5	5	21,0	23,5	47,0	1,2
5940TR6	6	23,0	26,0	52,0	1,5
5940TR8	8	25,0	29,0	58,0	2,0
5940TR10	10	27,0	31,5	63,0	3,0
5940TR12	12	28,0	33,0	66,0	4,0
5940TR14	14	29,5	35,5	71,0	7,5
5940TR16	16	30,0	36,0	72,0	9,0
5940TR19	19	31,0	37,0	74,0	11,0

5945

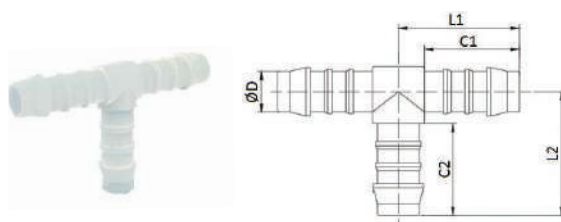
Reduced union barb connector



CODE	ØD1	ØD2	C1	L1	C2	L2	L	GR.
5945TR54	5	4	21,0	23,5	16,0	18,0	41,5	1,0
5945TR64	6	4	23,0	26,0	16,0	18,0	44,0	1,0
5945TR65	6	5	23,0	26,0	21,0	23,5	49,5	1,0
5945TR85	8	5	25,0	29,5	21,0	23,5	53,0	2,0
5945TR86	8	6	25,0	29,0	23,0	26,0	55,0	3,0
5945TR106	10	6	27,0	31,5	23,0	26,0	57,5	3,0
5945TR108	10	8	27,0	31,5	25,0	29,0	60,5	3,0
5945TR128	12	8	28,0	33,0	25,0	29,0	62,0	3,0
5945TR1210	12	10	28,0	33,0	27,0	31,5	64,5	5,0
5945TR1410	14	10	29,5	35,5	27,0	31,5	67,0	6,0
5945TR1412	14	12	29,5	35,5	28,0	33,0	68,5	7,0
5945TR1612	16	12	30,0	36,0	28,0	33,0	69,0	7,0
5945TR1614	16	14	30,0	36,0	29,5	35,5	71,5	8,0
5945TR1914	19	14	31,0	37,0	29,5	35,5	72,5	10,0
5945TR1916	19	16	31,0	37,0	30,0	36,0	73,0	10,0

5950

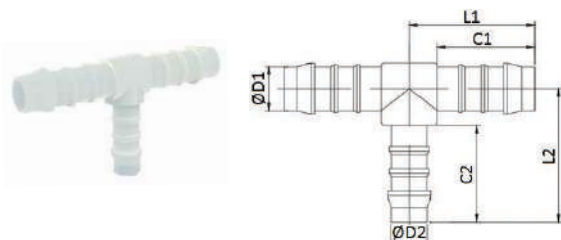
Union tee barb connector



CODE	ØD	C1	L1	C2	L2	GR.
5950TR4	4	16,0	19,0	16,0	20,5	1,0
5950TR5	5	21,0	25,0	21,0	26,5	1,0
5950TR6	6	23,0	27,5	23,0	29,0	1,0
5950TR8	8	25,0	30,5	25,0	32,5	3,0
5950TR10	10	27,0	33,0	27,0	33,5	5,0
5950TR12	12	28,0	34,0	28,0	37,5	8,0
5950TR14	14	29,5	42,5	29,5	42,5	12,0
5950TR16	16	30,0	44,0	30,0	44,0	13,0
5950TR19	19	31,0	45,0	31,0	45,0	17,0

5955

Reduced union tee barb connector

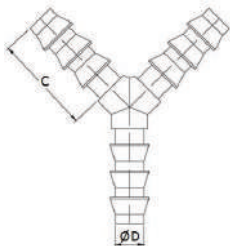


CODE	ØD1	ØD2	C1	L1	C2	L2	GR.
5955TR54	5	4	21,0	25,0	16,0	21,5	1,0
5955TR65	6	5	23,0	27,5	21,0	27,0	2,0
5955TR86	8	6	25,0	30,5	23,0	30,5	3,0
5955TR108	10	8	27,0	33,0	25,0	34,0	4,0
5955TR1210	12	10	28,0	34,5	27,0	36,5	7,0
5955TR1412	14	12	29,5	37,0	28,0	38,5	11,0
5955TR1614	16	14	30,0	39,0	29,5	41,5	13,0
5955TR1916	19	16	31,0	41,0	30,0	43,0	17,0



5960

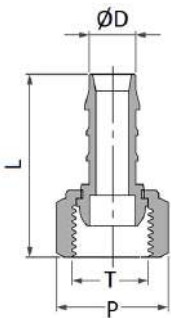
Y barb connector



CODE	ØD	C	GR.
5960TR4	4	16,5	1,0
5960TR6	6	23,5	1,5
5960TR8	8	25,5	3,0
5960TR10	10	24,0	5,0
5960TR17	17	24,0	7,0

5970

Swivel female barb connector BSPT thread



CODE	T	P	ØD	L	GR.
5970TR184	R1/8"	13	4	27,5	-
5970TR144	R1/4"	17	4	31,7	-
5970TR185	R1/8"	13	5	32,0	-
5970TR145	R1/4"	17	5	36,2	-
5970TR385	R3/8"	20	5	36,0	-
5970TR146	R1/4"	17	6	37,3	-
5970TR386	R3/8"	20	6	36,8	-
5970TR126	R1/2"	24	6	39,5	-
5970TR148	R1/4"	17	8	41,3	-
5970TR388	R3/8"	20	8	40,8	-
5970TR128	R1/2"	24	8	43,6	-
5970TR348	R3/4"	30	8	43,4	-
5970TR3810	R3/8"	20	10	42,8	-
5970TR1210	R1/2"	24	10	43,6	-
5970TR3410	R3/4"	30	10	45,6	-
5970TR1212	R1/2"	24	12	46,7	-
5970TR3412	R3/4"	30	12	46,5	-
5970TR1214	R1/2"	24	14	48,9	-
5970TR3414	R3/4"	30	14	48,1	-
5970TR3416	R3/4"	30	16	48,5	-
5970TR3419	R3/4"	30	19	49,3	-