

STANDARD FITTINGS

BRASS

PLUS

MECHANICAL RESISTANCE

PRINTED MATERIAL FOR BETTER
MECHANICAL STRENGTH



p. 305 / **1105**



p. 305 / **1106**



p. 306 / **1107**



p. 306 / **1108**



p. 306 / **1110**



p. 307 / **1112**



p. 307 / **1115**



p. 307 / **1116**



p. 308 / **1118**



p. 308 / **1120**



p. 308 / **1122**



p. 309 / **1125**



p. 309 / **1126**



p. 309 / **1130**



p. 310 / **1135**



p. 310 / **1136**



p. 310 / **1140**



p. 311 / **1145**



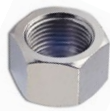
p. 311 / **1148**



p. 311 / **1149**



p. 311 / **1150**



p. 312 / **1155**



p. 312 / **1160**



p. 312 / **1161**



p. 312 / **1175**



p. 313 / **1176**



p. 313 / **1200**



p. 313 / **1205**



p. 313 / **1210**



p. 314 / **1215**



p. 314 / **1216**



p. 314 / **1220**



p. 314 / **1225**



p. 315 / **1230**



p. 315 / **1235**



p. 315 / **1240**



p. 315 / **1245**



p. 316 / **1300**



p. 316 / **1310**



p. 316 / **1320**



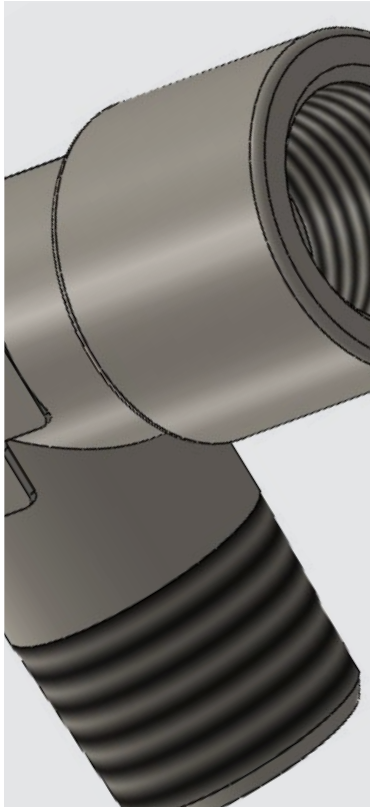
p. 316 / **1322**



p. 317 / **1600**



p. 317 / **1110-3PCS**



Temperature depends on the tube used, so the value will be defined according to the features of the tube itself with NBR O-Ring: -20°C ÷ +100°C



Up to 60 Bar pressure depends on the tube used, so their values will be defined according to the features of the tube itself



Compressed air, water, oil and fluids suitable with construction materials



Taper gas BSPT ISO 7 from R1/8" to R1"
 Parallel gas BSPP ISO 228 from G1/8" to G1"
 Metric ISO 262 - M5



Lathed: Nickel plated brass
 UNI EN 12164 CW 614N

Printed: Nickel plated brass
 UNI EN 12164 CW 617N

O'ring: NBR



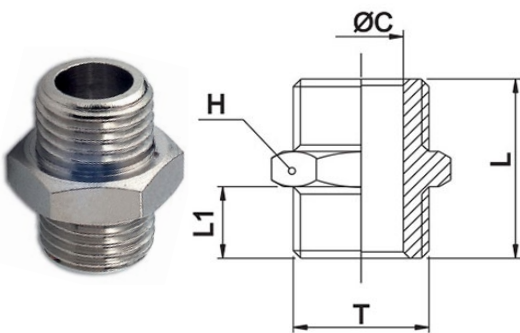
Products in compliance with the directive 2002/95/EC

RoHS2

Products in compliance with the directive 2011/65/EU

1105

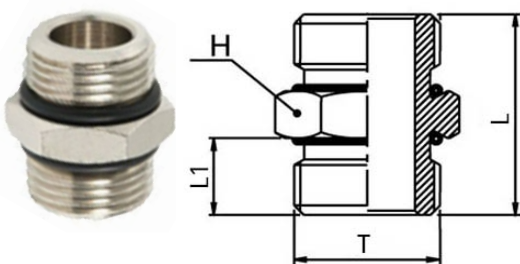
Nipple BSPP & metric thread



CODE	T	ØC	L	L1	H	GR.
1105TRM5	M5	2,5	11,0	4	8	2,0
1105TR18	G1/8"	6,0	18,5	7	14	9,0
1105TR14	G1/4"	8,5	21,0	8	17	15,0
1105TR38	G3/8"	11,5	23,0	9	19	21,0
1105TR12	G1/2"	15,0	25,0	10	24	34,0
1105TR34	G3/4"	20,0	27,5	11	30	53,0
1105TR1	G1"	26,0	32,0	13	36	84,0

1106

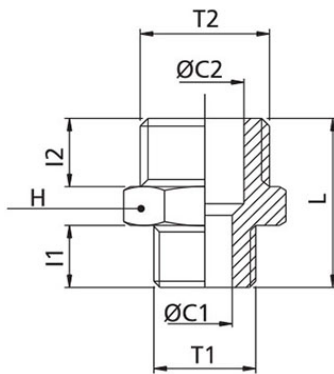
Nipple BSPP thread with OR



CODE	T	L	L1	H	GR.
1106TR18	G1/8"	14	6,5	17,5	8,0
1106TR14	G1/4"	17	8	21	16,0
1106TR38	G3/8"	20	9	23	24,0
1106TR12	G1/2"	24	10	26	38,0

1107

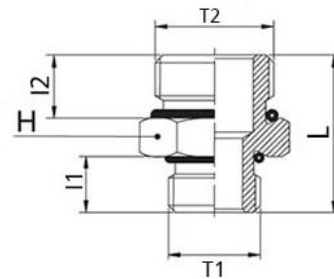
Reduced nipple BSPP & metric thread



CODE	T1	T2	ØC1	ØC2	I1	I2	L	H	GR.
1107TRM518	M5	G1/8"	2,5	6,0	5,0	6,5	15,5	14	7,0
1107TR1814	G1/8"	G1/4"	5,5	8,5	6,5	8,0	19,0	17	14,0
1107TR1838	G1/8"	G3/8"	5,5	11,5	6,5	9,0	20,5	19	19,0
1107TR1438	G1/4"	G3/8"	8,5	11,5	8,0	9,0	22,0	19	19,0
1107TR1412	G1/4"	G1/2"	8,0	15,0	9,0	10,0	24,5	24	35,0
1107TR3812	G3/8"	G1/2"	11,0	15,0	9,0	10,0	24,5	24	36,0
1107TR3834	G3/8"	G3/4"	11,0	20,0	10,0	11,0	26,5	30	52,0
1107TR1234	G1/2"	G3/4"	15,0	20,0	11,0	11,0	27,5	30	52,0
1107TR341	G3/4"	G1"	20,0	25,5	11,0	13,0	30,0	36	71,0

1108

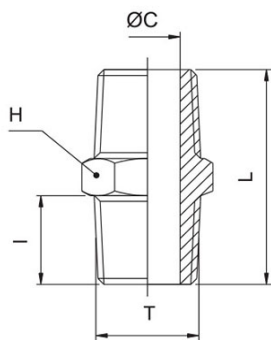
Reduced nipple BSPP thread with OR



CODE	T1	T2	L	I1	I2	H	GR.
1108TR1814	G1/8"	G1/4"	19,5	6,5	8	17	14,0
1108TR1838	G1/8"	G3/8"	21	6,5	9	20	22,0
1108TR1438	G1/4"	G3/8"	22	8	9	20	24,0
1108TR1412	G1/4"	G1/2"	24	8	10	24	34,0
1108TR3812	G3/8"	G1/2"	25	9	10	24	34,0

1110

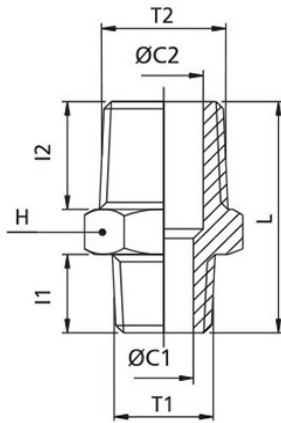
Nipple BSPT thread



CODE	T	ØC	I	L	H	GR.
1110TR18	R1/8"	6,0	7,5	19,0	12	7,0
1110TR14	R1/4"	7,5	11,0	26,5	14	16,0
1110TR38	R3/8"	11,5	11,0	27,0	17	23,0
1110TR12	R1/2"	15,0	12,5	30,5	22	79,0
1110TR34	R3/4"	20,0	14,0	34,5	27	61,0
1110TR1	R1"	26,0	15,5	37,0	34	92,0

1112

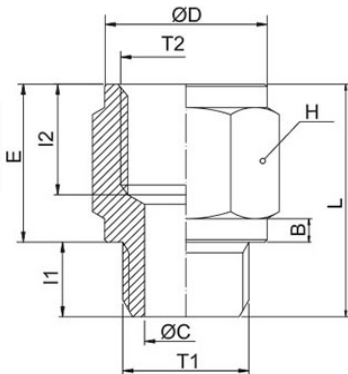
Reduced nipple BSPT thread



CODE	T1	T2	ØC1	ØC2	I1	I2	L	H	GR.
1112TR1814	R1/8"	R1/4"	5,5	8,5	7,5	11,0	23,0	14	12,0
1112TR1838	R1/8"	R3/8"	5,5	11,5	7,5	11,0	23,5	17	19,0
1112TR1438	R1/4"	R3/8"	8,5	11,5	10,5	11,0	26,5	17	21,0
1112TR1412	R1/4"	R1/2"	8,0	15,0	10,5	12,5	28,5	22	32,0
1112TR3812	R3/8"	R1/2"	11,0	15,0	10,5	12,5	28,5	22	35,0
1112TR1234	R1/2"	R3/4"	15,0	20,0	12,5	14,0	32,5	27	58,0
1112TR341	R3/4"	R1"	20,0	25,5	13,0	15,5	35,5	34	91,0

1115

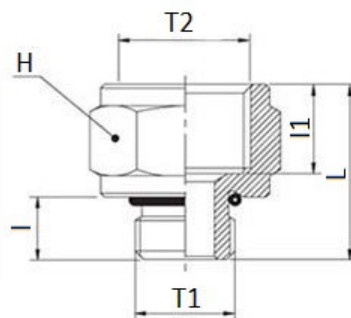
Enlarger M/F BSPP & metric thread enlarger



CODE	T1	T2	B	ØC	ØD	I1	I2	E	L	H	GR.
1115TRM5	M5	M5	1,5	2,5	7,5	4,5	5,0	6,5	11,0	8	3,0
1115TRM518	M5	G1/8"	2,0	2,2	13,5	5,0	7,0	11,0	16,0	14	10,0
1115TRM618	M6	G1/8"	2,0	2,7	13,5	6,0	7,0	11,0	17,0	14	10,0
1115TR18	G1/8"	G1/8"	2,0	5,5	13,5	6,5	8,0	11,0	17,5	14	11,0
1115TR1814	G1/8"	G1/4"	2,0	5,5	16,5	6,5	10,5	13,5	20,0	17	18,0
1115TR1838	G1/8"	G3/8"	2,5	5,5	21,5	6,5	10,5	14,0	20,5	22	33,0
1115TR14	G1/4"	G1/4"	2,0	8,5	16,5	8,0	10,5	13,5	21,5	17	19,0
1115TR1438	G1/4"	G3/8"	2,5	8,0	21,5	9,0	10,5	14,0	23,0	22	32,0
1115TR1412	G1/4"	G1/2"	3,0	8,0	26,5	9,0	12,5	17,0	26,0	27	51,0
1115TR38	G3/8"	G3/8"	2,5	11,0	21,5	9,0	10,5	14,0	23,0	22	32,0
1115TR3812	G3/8"	G1/2"	3,0	11,0	26,5	9,0	12,5	17,0	26,0	27	54,0
1115TR3834	G3/8"	G3/4"	3,0	11,0	31,5	9,0	12,5	17,0	26,0	32	66,0
1115TR12	G1/2"	G1/2"	3,0	15,0	26,5	10,5	12,5	16,0	26,5	27	56,0
1115TR1234	G1/2"	G3/4"	3,0	15,0	31,5	10,5	12,5	17,0	27,5	32	71,0
1115TR121	G1/2"	G1"	3,0	15,0	37,5	11,0	12,5	18,0	29,0	38	93,0
1115TR34	G3/4"	G3/4"	3,0	20,0	31,5	10,5	12,5	17,0	27,5	32	69,0
1115TR341	G3/4"	G1"	3,0	20,0	37,5	11,0	12,5	18,0	29,0	38	93,0
1115TR1	G1"	G1"	3,0	26,0	37,5	13,0	12,5	18,0	31,0	38	96,0

1116

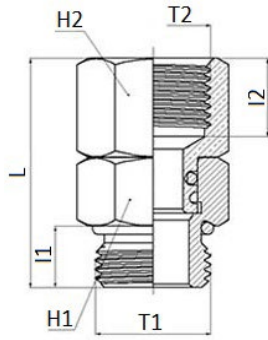
Enlarger M/F BSPP thread with OR



CODE	T1	T2	L	I	I1	H	GR.
1116TR18	G1/8"	G1/8"	17	6,5	8,5	17	12,3
1116TR1814	G1/8"	G1/4"	20	6,5	11	20	13,0
1116TR1838	G1/8"	G3/8"	21	6,5	11,5	21	31,0
1116TR14	G1/4"	G1/4"	21,5	8	11	21,5	18,0
1116TR1438	G1/4"	G3/8"	22,5	8	11,5	22,5	32,0
1116TR1412	G1/4"	G1/2"	26	9	14	26	36,0
1116TR38	G3/8"	G3/8"	23,5	9	11,5	23,5	32,0
1116TR3812	G3/8"	G1/2"	27	9	14	27	38,0

1118

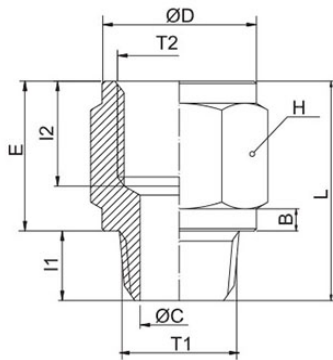
Swivel nipple BSPP thread with OR



CODE	T1	T2	I1	I2	L	H1	H2	GR.
1118TR18	G1/8"	G1/8"	6,5	8	27	13	13	2,0
1118TR14	G1/4"	G1/4"	8	11	32	16	16	32,0
1118TR38	G3/8"	G3/8"	9	11,5	33,5	19	19	44,0

1120

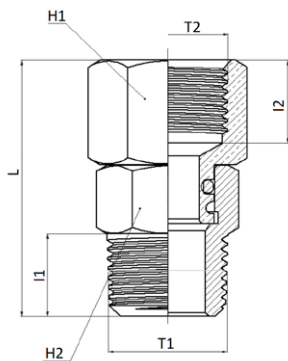
Enlarger M BSPT thread / F BSPP thread



CODE	T1	T2	B	ØC	ØD	I1	I2	E	L	H	GR.
1120TR18	R1/8"	G1/8"	2,0	5,5	13,5	7,5	8	11,0	18,5	14	12,0
1120TR1814	R1/8"	G1/4"	2,0	5,5	16,5	7,5	10,5	13,5	21,0	17	18,0
1120TR1838	R1/8"	G3/8"	2,5	5,5	21,5	7,5	10,5	14,0	21,5	22	31,0
1120TR14	R1/4"	G1/4"	2,0	8,5	16,5	10,5	10,5	13,5	24,0	17	18,0
1120TR1438	R1/4"	G3/8"	2,5	8,0	21,5	10,5	10,5	14,0	24,5	22	32,0
1120TR1412	R1/4"	G1/2"	3,0	8,0	26,5	10,5	12,5	17,0	27,5	27	52,0
1120TR38	R3/8"	G3/8"	2,5	11,0	21,5	10,5	10,5	14,0	24,5	22	37,0
1120TR3812	R3/8"	G1/2"	3,0	11,0	26,5	10,5	12,5	17,0	27,5	27	55,0
1120TR3834	R3/8"	G3/4"	3,0	11,0	31,5	11,0	12,5	17,0	28,0	32	74,0
1120TR12	R1/2"	G1/2"	3,0	15,0	26,5	12,5	12,5	16,0	28,5	27	54,0
1120TR1234	R1/2"	G3/4"	3,0	15,0	31,5	12,5	12,5	17,0	29,5	32	70,0
1120TR121	R1/2"	G1"	3,0	15,0	37,5	13,0	12,5	18,0	31,0	38	91,0
1120TR34	R3/4"	G3/4"	3,0	20,0	31,5	13,0	12,5	17,0	30,0	32	74,0
1120TR341	R3/4"	G1"	3,0	20,0	37,5	13,0	12,5	18,0	31,0	38	97,0
1120TR1	R1"	G1"	3,0	26,0	37,5	15,5	12,5	18,0	33,5	38	100,0

1122

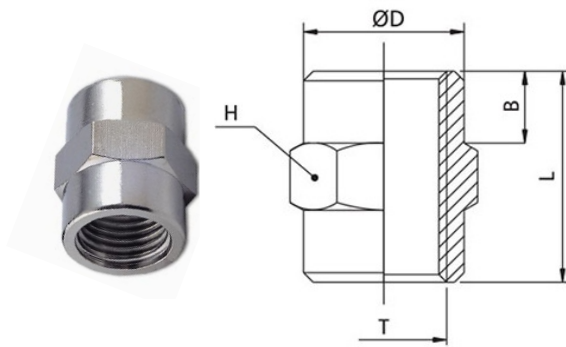
Swivel nipple BSPT thread



CODE	T1	T2	I1	I2	L	H1	H2	GR.
1122TR18	R1/8"	R1/8"	8	8	28	12	13	2,0
1122TR14	R1/4"	R1/4"	11	11	34	14	16	3,0
1122TR38	R3/8"	R3/8"	11,5	11,5	35,5	17	19	42,0

1125

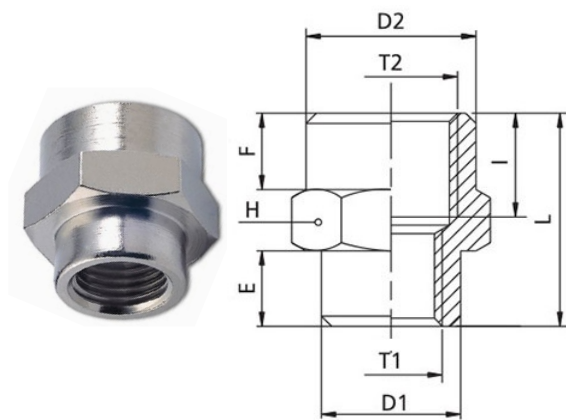
Sleeve F/F BSPP & metric thread



CODE	T	ØD	B	L	H	GR.
1125TRM5	M5	7,5	3,5	11,0	8	3,0
1125TR18	G1/8"	13,5	5,0	15,0	14	10,0
1125TR14	G1/4"	16,5	8,0	22,0	17	18,0
1125TR38	G3/8"	21,5	8,5	24,0	22	37,0
1125TR12	G1/2"	26,5	10,0	29,0	27	62,0
1125TR34	G3/4"	31,5	10,0	29,0	32	70,0
1125TR1	G1"	37,5	11,0	31,0	38	89,0

1126

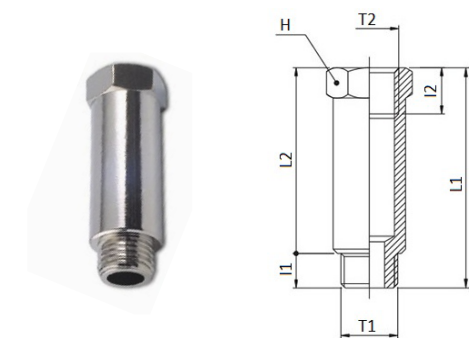
Sleeve sleeve F/F BSPP & metri thread



CODE	T1	T2	ØD1	ØD2	I	E	F	L	H	GR.
1126TRM518	M5	G1/8"	8,0	13,5	7,0	3,5	4,5	12,5	14	9,0
1126TR1814	G1/8"	G1/4"	13,0	16,5	11,0	6,0	8,0	20,0	17	18,0
1126TR1838	G1/8"	G3/8"	14,0	21,5	11,0	6,0	8,0	20,0	22	28,0
1126TR1438	G1/4"	G3/8"	17,0	21,5	11,0	7,0	8,0	21,0	22	30,0
1126TR1412	G1/4"	G1/2"	17,0	26,5	13,0	8,0	9,0	24,0	27	46,0
1126TR3812	G3/8"	G1/2"	21,5	26,5	13,0	8,0	9,0	24,0	27	48,0
1126TR3834	G3/8"	G3/4"	21,0	31,5	13,5	8,0	10,0	25,0	32	64,0
1126TR1234	G1/2"	G3/4"	26,0	31,5	13,5	8,0	10,0	25,0	32	65,0
1126TR121	G1/2"	G1"	26,0	37,0	14,0	8,0	10,0	25,0	38	84,0
1126TR341	G3/4"	G1"	32,0	37,0	14,0	8,0	10,0	25,0	38	83,0

1130

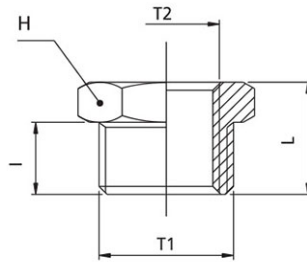
Extension M/F BSPP thread



CODE	T1	T2	I1	I2	L1	L2	H	GR.
1130TR181422	G1/8"	G1/8"	6	8,0	22	16	14	14,0
1130TR181442	G1/8"	G1/8"	6	8,0	42	36	14	30,0
1130TR181451	G1/8"	G1/8"	6	8,0	51	45	14	36,0
1130TR141735	G1/4"	G1/4"	8	11,0	35	27	17	32,0
1130TR141751	G1/4"	G1/4"	8	11,0	51	43	17	46,0

1135

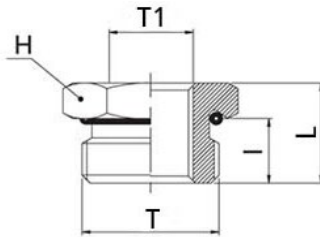
Reducer M/F BSPP & metric thread



CODE	T1	T2	I	L	H	GR.
1135TRM518	G1/8"	M5	6,5	10,5	14	7,0
1135TR1418	G1/4"	G1/8"	8,0	12,5	17	10,0
1135TR3818	G3/8"	G1/8"	9,0	14,0	19	18,0
1135TR3814	G3/8"	G1/4"	9,0	14,0	19	13,0
1135TR1218	G1/2"	G1/8"	10,0	15,0	24	39,0
1135TR1214	G1/2"	G1/4"	10,0	15,0	24	32,0
1135TR1238	G1/2"	G3/8"	10,0	15,0	24	21,0
1135TR3414	G3/4"	G1/4"	11,0	16,5	30	64,0
1135TR3438	G3/4"	G3/8"	11,0	16,5	30	52,0
1135TR3412	G3/4"	G1/2"	11,0	16,5	30	36,0
1135TR138	G1"	G3/8"	13,5	19,5	36	110,0
1135TR112	G1"	G1/2"	13,0	19,0	36	90,0
1135TR134	G1"	G3/4"	13,0	19,0	36	59,0

1136

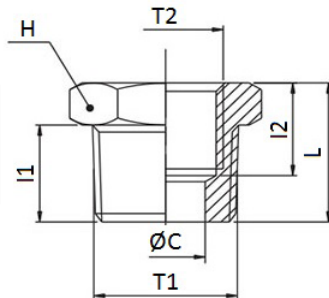
Reducer M/F BSPP thread with OR



CODE	T	T1	I	L	H	GR.
1136TRM518	M5	G1/8"	6,5	11	14	8,0
1136TR1418	G1/4"	G1/8"	8	13	17	1,0
1136TR3818	G3/8"	G1/8"	9	14	20	2,0
1136TR3814	G3/8"	G1/4"	9	14	20	14,0
1136TR1218	G1/2"	G1/8"	10	15,5	24	38,0
1136TR1214	G1/2"	G1/4"	10	15,5	24	29,0
1136TR1238	G1/2"	G3/8"	10	15,5	24	2,0

1140

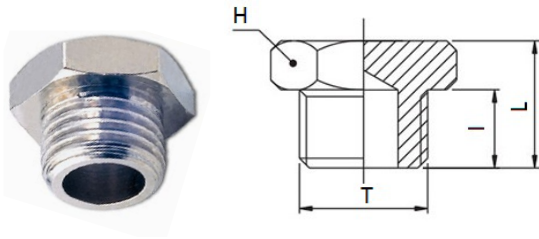
Reduced M BSPT thread / F BSPP thread



CODE	T1	T2	ØC	I1	I2	L	H	GR.
1140TR1418	R1/4"	G1/8"	6,0	11,0	9,0	15,5	14	9,0
1140TR3818	R3/8"	G1/8"	6,5	11,0	9,0	15,5	17	21,0
1140TR3814	R3/8"	G1/4"	8,5	11,0	11,0	15,5	17	13,0
1140TR1218	R1/2"	G1/8"	6,0	12,5	10,0	18,0	22	42,0
1140TR1214	R1/2"	G1/4"	8,5	12,5	11,5	18,0	22	34,0
1140TR1238	R1/2"	G3/8"	11,5	12,5	11,5	18,0	22	25,0
1140TR3414	R3/4"	G1/4"	8,5	14,0	12,0	20,0	27	74,0
1140TR3438	R3/4"	G3/8"	11,5	14,0	12,0	20,0	27	62,0
1140TR3412	R3/4"	G1/2"	15,0	14,0	14,0	20,0	27	43,0
1140TR138	R1"	G3/8"	15,0	15,5	13,0	21,5	34	123,0
1140TR112	R1"	G1/2"	15,0	15,5	14,0	21,5	34	104,0
1140TR134	R1"	G3/4"	20,0	15,5	14,0	21,5	34	73,0

1145

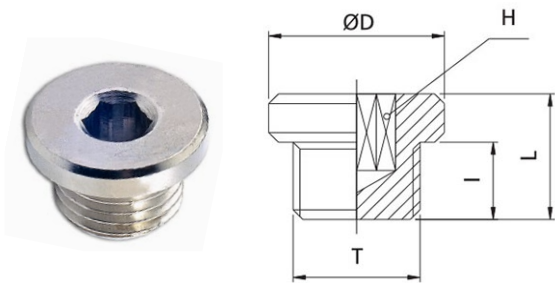
Plug M BSPP & metric thread



CODE	T	I	L	H	GR.
1145TRM5	M5	4,5	7,5	8	4,0
1145TR18	G1/8"	6,0	10,0	14	7,0
1145TR14	G1/4"	8,0	12,5	17	12,0
1145TR38	G3/8"	9,0	13,5	19	19,0
1145TR12	G1/2"	10,0	15,0	24	28,0
1145TR34	G3/4"	11,0	16,5	30	46,0
1145TR1	G1"	12,5	18,5	36	79,0

1148

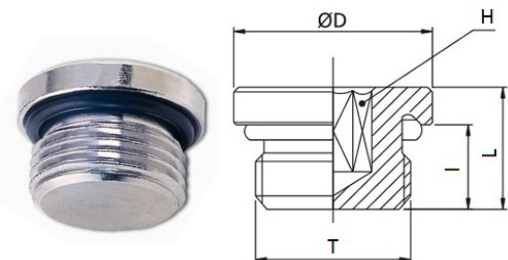
Plug M BSPP & metric thread with exagon embedded



CODE	T	I	L	ØD	H	GR.
1148TRM5	M5	4,0	6,5	8,0	2,5	2,0
1148TR18	G1/8"	6,0	10,0	15,0	5	8,0
1148TR14	G1/4"	8,0	12,0	18,0	6	12,0
1148TR38	G3/8"	9,0	13,0	21,0	8	22,0
1148TR12	G1/2"	10,0	14,5	25,0	10	36,0

1149

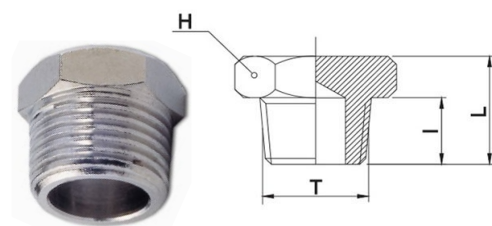
Plug M BSPP & metric thread with exagon embedded and OR



CODE	T	I	L	ØD	H	GR.
1149TRM5	M5	4,5	7,2	8,0	2,5	1,4
1149TR18	G1/8"	6,5	9,5	14,0	5	6,0
1149TR14	G1/4"	8,0	11,5	17,0	6	12,0
1149TR38	G3/8"	9,0	12,5	20,0	8	18,0
1149TR12	G1/2"	10,0	14,0	26,0	10	32,0

1150

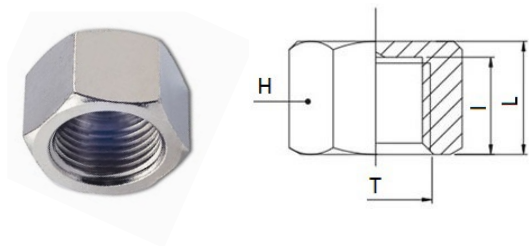
Plug M BSPT thread



CODE	T	I	L	H	GR.
1150TR18	R1/8"	7,5	11,5	10	4,0
1150TR14	R1/4"	11,0	15,5	14	9,0
1150TR38	R3/8"	11,0	16,0	17	17,0
1150TR12	R1/2"	12,0	17,5	22	29,0
1150TR34	R3/4"	13,5	19,5	27	60,0
1150TR1	R1"	15,5	22,0	34	92,0

1155

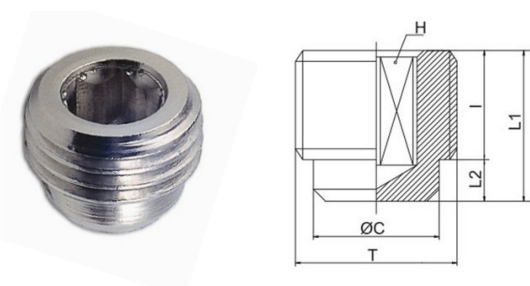
Plug F BSPP & metric thread



CODE	T	I	L	H	GR.
1155TRM5	M5	5,5	7,0	8	2,0
1155TR18	G1/8"	9,0	11,0	14	5,0
1155TR14	G1/4"	11,0	13,0	17	17,0
1155TR38	G3/8"	11,0	13,5	21	23,0
1155TR12	G1/2"	11,0	13,5	24	44,0
1155TR34	G3/4"	12,5	15,0	30	44,0
1155TR1	G1"	12,5	15,0	38	56,0

1160

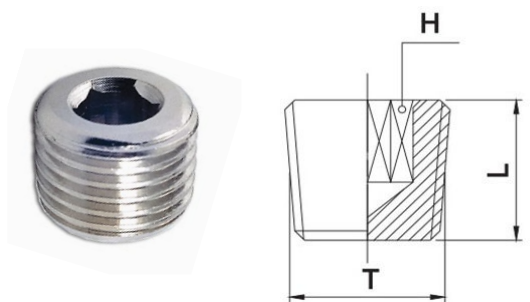
Plug M BSPP thread with exagon embedded



CODE	T	I	ØC	L1	L2	H	GR.
1160TR18	G1/8"	4,0	8,0	7,0	3,0	5	2,0
1160TR14	G1/4"	6,0	10,5	10,0	4,0	6	6,0
1160TR38	G3/8"	6,0	13,5	10,0	4,0	8	10,0
1160TR12	G1/2"	6,5	17,5	11,0	4,0	10	13,0

1161

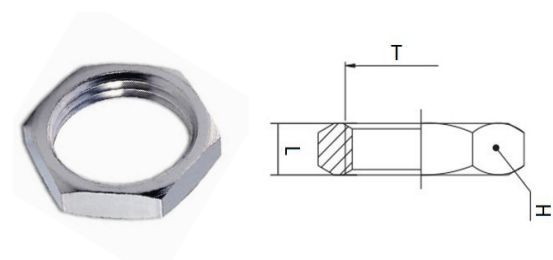
Flat plug M BSPT thread exagon embedded



CODE	T	L	H	GR.
1161TR18	R1/8"	8,0	5	3,0
1161TR14	R1/4"	10,0	6	7,0
1161TR38	R3/8"	10,5	8	23,0
1161TR12	R1/2"	13,0	10	24,0
1161TR34	R3/4"	15,5	14	32,0
1161TR1	R1"	17,5	17	45,0

1175

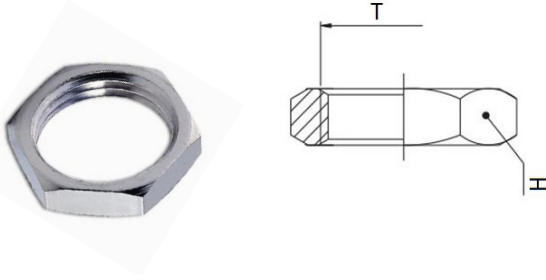
Nut BSPP & metric thread



CODE	T	L	H	GR.
1175TRM5	M5	2,5	9	1,0
1175TR18	G1/8"	3,5	12	3,0
1175TR14	G1/4"	4,0	16	2,0
1175TR38	G3/8"	4,5	19	3,0
1175TR12	G1/2"	4,5	24	6,0
1175TR34	G3/4"	5,0	30	10,0
1175TR1	G1"	6,0	38	20,0

1176

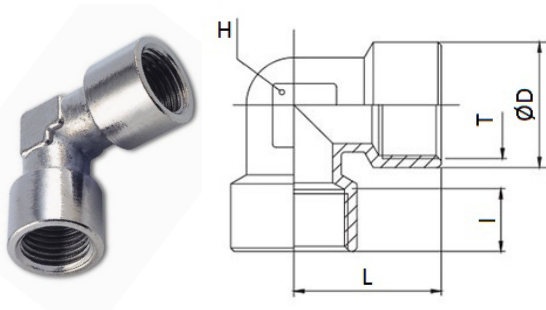
Bulkhead locking nut metric thread



CODE	T	H	GR.
1176TRM101	M10X1	14	3,0
1176TRM121	M12X1	16	3,8
1176TRM1615	M16X1,5	19	5,0
1176TRM1815	M18X1,5	22	7,0
1176TRM2015	M20X1,5	24	18,0
1176TRM2215	M22X1,5	25	17,0
1176TRM2615	M26X1,5	32	21,0
1176TRM2815	M28X1,5	36	23,0

1200

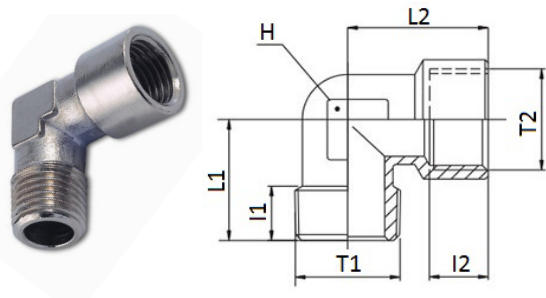
Elbow F/F BSPP & metric thread



CODE	T	I	D	L	H	GR.
1200TRM5	M5	5,5	9,0	11,0	8	6,0
1200TR18	G1/8"	8,0	13,5	20,5	10	19,0
1200TR14	G1/4"	11,5	16,5	31,0	13	33,0
1200TR38	G3/8"	12,0	21,0	36,0	17	57,0
1200TR12	G1/2"	15,0	26,0	44,0	21	109,0
1200TR34	G3/4"	16,5	32,0	36,5	25	144,0
1200TR1	G1"	19,0	39,0	45,0	30	244,0

1205

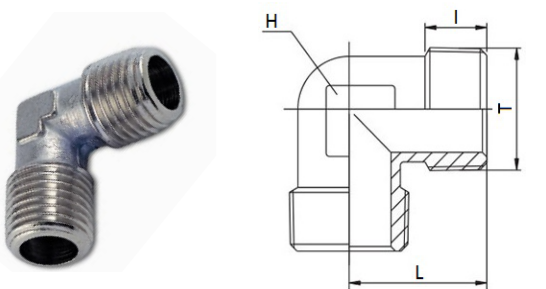
Elbow male BSPT / Female BSPP & metric thread



CODE	T1	T2	I1	I2	L1	L2	H	GR.
1205TRM5	M5	M5	5,0	5,5	11,5	11	8	7,0
1205TR18	R1/8"	G1/8"	9,5	8,0	17,5	19,5	10	16,0
1205TR14	R1/4"	G1/4"	11,5	11,5	24,0	25	13	31,0
1205TR38	R3/8"	G3/8"	13,0	12,0	27,5	27,5	17	46,0
1205TR12	R1/2"	G1/2"	15,0	15,0	30,0	33,5	21	92,0
1205TR34	R3/4"	G3/4"	16,0	16,5	33,0	36,5	25	120,0
1205TR1	R1"	G1"	17,0	19,0	39,0	45,0	30	212,0

1210

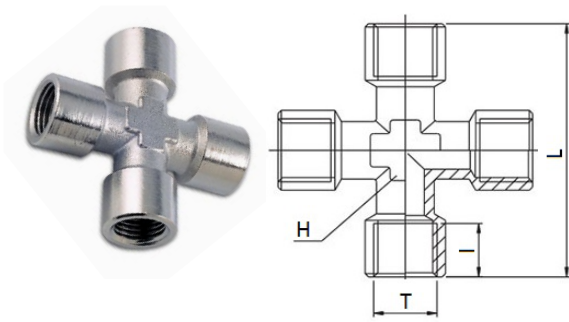
Elbow M/M BSPT & metric thread



CODE	T	I	L	H	GR.
1210TRM5	M5	5,0	13,5	8	6,0
1210TR18	R1/8"	9,0	18,5	10	13,0
1210TR14	R1/4"	11,5	22,0	12	20,0
1210TR38	R3/8"	13,0	26,0	13	31,0
1210TR12	R1/2"	14,0	28,5	17	55,0
1210TR34	R3/4"	16,0	33,0	25	100,0
1210TR1	R1"	17,0	39,0	30	174,0

1215

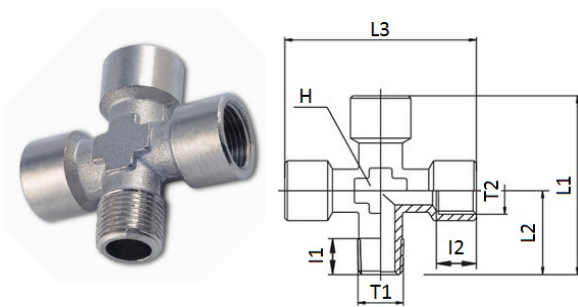
Tee F/F/F/F equal cross BSPT thread



CODE	T	I	L	H	GR.
1215TR18	G1/8"	8,0	42,0	10	38,0
1215TR14	G1/4"	11,0	51,0	13	76,0
1215TR38	G3/8"	11,5	56,0	17	108,0
1215TR12	G1/2"	14,0	67,0	21	186,0

1216

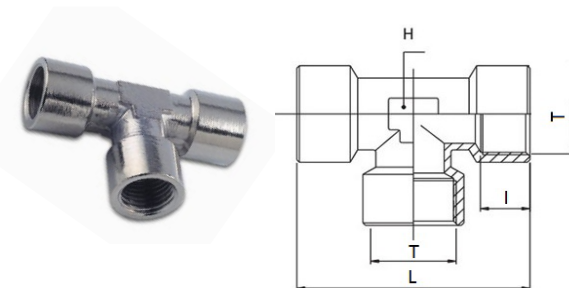
Tee M/F/F/F equal cross BSPT thread



CODE	T1	T2	I1	I2	L1	L2	L3	H	GR.
1216TR18	R1/8"	G1/8"	8,0	8,0	39,5	18,5	42	10	34,0
1216TR14	R1/4"	G1/4"	11,0	11,0	49,0	23,5	51	13	68,0
1216TR38	R3/8"	G3/8"	11,5	11,5	54,0	26,0	56	17	100,0
1216TR12	R1/2"	G1/2"	14,0	14,0	64,5	31,0	67	21	168,0

1220

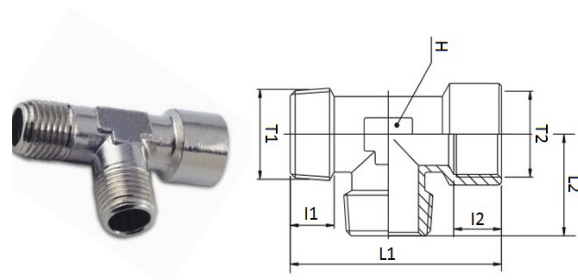
Tee F/F/F BSPP & metric thread



CODE	T	I	L	H	GR.
1220TRM5	M5	5,5	26,5	8	7,0
1220TR18	G1/8"	8,0	40,0	10	28,0
1220TR14	G1/4"	11,5	50,0	13	49,0
1220TR38	G3/8"	12,0	57,0	17	85,0
1220TR12	G1/2"	15,0	68,5	21	146,0
1220TR34	G3/4"	16,5	73,0	25	194,0
1220TR1	G1"	19,0	90,0	30	326,0

1225

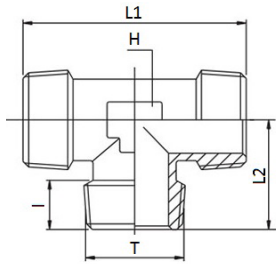
Tee M/M/F BSPT & metric thread



CODE	T1	T2	I1	I2	L1	L2	H	GR.
1225TRM5	M5	M5	5,0	5,5	26,0	13,0	8	8,0
1225TR18	R1/8"	G1/8"	9,5	8,0	38,5	18,5	10	25,0
1225TR14	R1/4"	G1/4"	11,5	11,5	47,5	23,5	13	43,0
1225TR38	R3/8"	G3/8"	13,0	12,0	56,0	26,0	17	72,0
1225TR12	R1/2"	G1/2"	15,0	15,0	67,5	32,0	21	102,0
1225TR34	R3/4"	G3/4"	16,0	16,5	69,5	33,0	25	156,0
1225TR1	R1"	G1"	17,5	19,0	84,0	39,0	30	268,0

1230

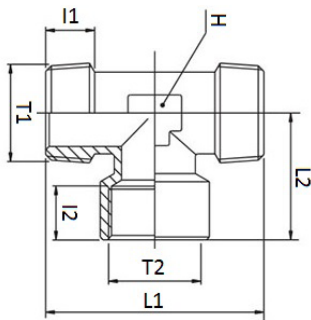
Tee M/M/M BSPT & metric thread



CODE	T	I	L1	L2	H	GR.
1230TRM5	M5	5,0	27,5	13,5	8	8,0
1230TR18	R1/8"	9,5	36,0	17,0	10	20,0
1230TR14	R1/4"	11,5	48,0	24,0	12	38,0
1230TR38	R3/8"	12,0	48,0	24,0	13	47,0
1230TR12	R1/2"	15,0	57,0	28,0	17	80,0
1230TR34	R3/4"	16,2	66,4	33,0	25	134,0
1230TR1	R1"	17,5	78,0	39,0	30	236,0

1235

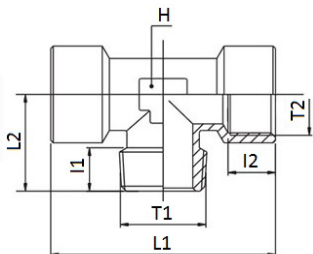
Tee M/F/M BSPT & metric thread



CODE	T1	T2	I1	I2	L1	L2	H	GR.
1235TRM5	M5	M5	5,0	5,5	27,5	13,0	8	6,0
1235TR18	R1/8"	G1/8"	9,5	8,0	36,5	19,5	10	22,0
1235TR14	R1/4"	G1/4"	11,5	11,5	48,0	25,5	13	37,0
1235TR38	R3/8"	G3/8"	13,0	12,0	51,5	28,0	17	62,0
1235TR12	R1/2"	G1/2"	15,0	15,0	63,0	34,0	21	118,0
1235TR34	R3/4"	G3/4"	16,0	16,5	66,4	36,5	25	156,0
1235TR1	R1"	G1"	17,5	19,0	78,0	45,0	30	268,0

1240

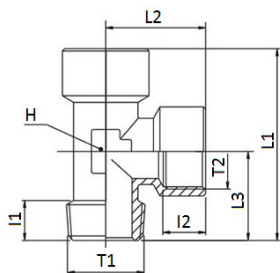
Tee F/M/F BSPT & metric thread



CODE	T1	T2	I1	I2	L1	L2	H	GR.
1240TRM5	M5	M5	5,0	5,5	26,5	11,5	8	9,0
1240TR18	R1/8"	G1/8"	9,5	8,0	40,0	18,5	10	22,0
1240TR14	R1/4"	G1/4"	11,5	11,5	50,0	24,5	13	49,0
1240TR38	R3/8"	G3/8"	13,0	12,0	57,0	26,5	17	75,0
1240TR12	R1/2"	G1/2"	15,0	15,0	68,5	32,0	21	127,0
1240TR34	R3/4"	G3/4"	16,0	16,5	73,0	33,0	25	178,0
1240TR1	R1"	G1"	17,5	19,0	90,0	39,0	30	296,0

1245

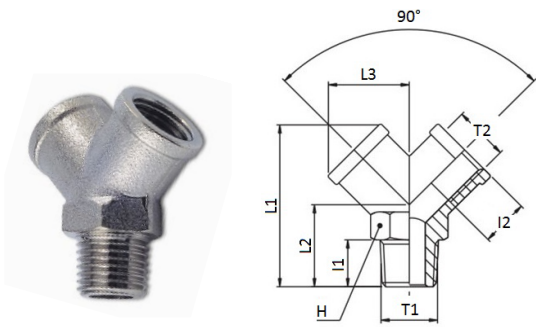
Tee M/F/F BSPT & metric thread



CODE	T1	T2	I1	I2	L1	L2	L3	H	GR.
1245TRM5	M5	M5	5,0	5,5	26,0	13,0	12,0	8	9,0
1245TR18	R1/8"	G1/8"	9,5	8,0	38,5	19,5	18,5	10	24,0
1245TR14	R1/4"	G1/4"	11,5	11,5	49,0	25,0	24,0	13	44,0
1245TR38	R3/8"	G3/8"	13,0	12,0	54,0	28,5	25,5	17	74,0
1245TR12	R1/2"	G1/2"	15,0	15,0	65,5	34,5	31,0	21	132,0
1245TR34	R3/4"	G3/4"	16,0	16,5	69,5	36,5	33,0	25	172,0
1245TR1	R1"	G1"	17,5	19,0	84,0	45,0	39,0	30	298,0

1300

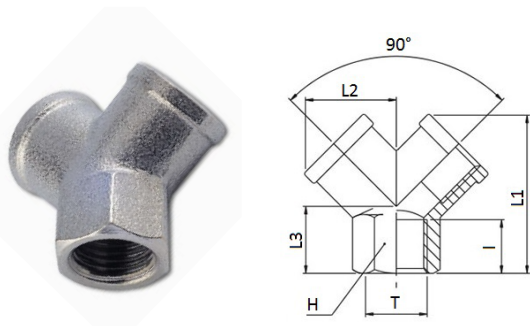
Y F/M/F BSPT thread



CODE	T1	T2	I1	I2	L1	L2	L3	H	GR.
1300TR18	R1/8"	G1/8"	8,0	8,0	32,0	16	14,5	13	22,0
1300TR14	R1/4"	G1/4"	11,0	11,0	38,0	20	18,0	17	38,0
1300TR38	R3/8"	G3/8"	11,5	11,5	42,5	22	20,5	20	52,0
1300TR12	R1/2"	G1/2"	14,0	14,0	53,0	27	26,5	25	110,0

1310

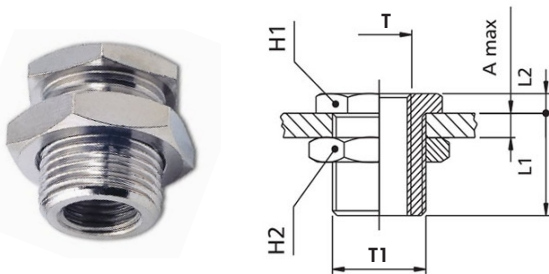
Y F/F/F BSPT thread



CODE	T	I	L1	L2	L3	H	GR.
1310TR18	G1/8"	8,0	26,5	14,5	12	13	18,0
1310TR14	G1/4"	11,0	32,0	18,0	14	17	32,0
1310TR38	G3/8"	11,5	37,0	20,5	16	20	44,0
1310TR12	G1/2"	14,0	45,0	26,5	19	25	92,0

1320

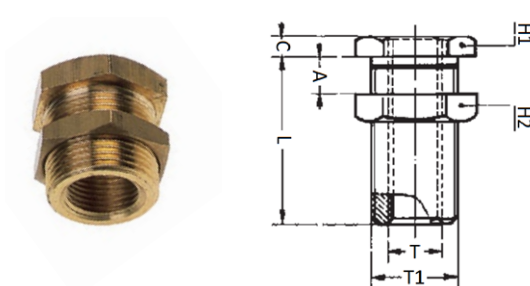
F/F bulkhead connector BSPP & metric thread



CODE	T	T1	A MAX	L1	L2	H1	H2	GR.
1320TRM5M101	M5	M10X1	7	10,5	3,5	14	14	12,0
1320TR18M1615	G1/8"	M16X1,5	10	14,0	4,0	19	22	30,0
1320TR14M2015	G1/4"	M20X1,5	16	21,0	4,0	24	27	58,0
1320TR38M2615	G3/8"	M26X1,5	15	21,0	5,0	30	32	94,0
1320TR12M2815	G1/2"	M28X1,5	21	27,0	6,0	32	36	116,0

1322

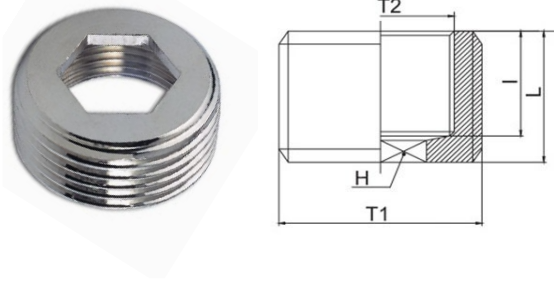
Bulkhead connector F/F in yellow brass BSPP thread



CODE	T	T1	C	L	A	H1	H2
1322TR18M1615	G1/8	M16X1,5	4	14	9	19	19
1322TR14M2015	G1/4	M20X1,5	4	21	15	24	24
1322TR38M2615	G3/8	M26X1,5	5	21	14	30	30
1322TR12M282	G1/2	M28X2	6	27	20	32	32
1322TR34M342	G3/4	M34X2	6	30	22,5	41	41
1322TR114M492	G1-1/4	M49X2	8	39	29,5	55	55

1600

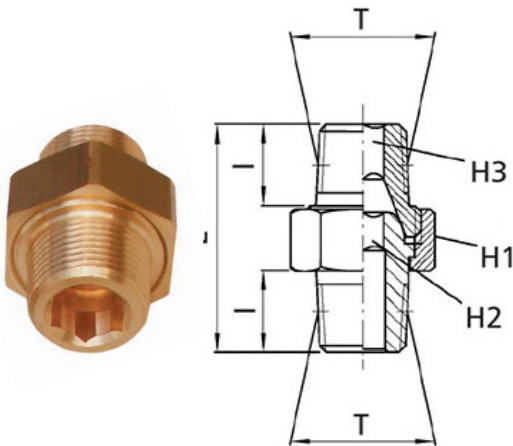
Reducer M/F BSPP & metric thread with exagon embedded



CODE	T1	T2	I	L	H	GR.
1600TRM518	G1/8"	M5	6,5	8,0	3	3,0
1600TR1418	G1/4"	G1/8"	7,0	9,0	6	7,0
1600TR3818	G3/8"	G1/8"	7,0	9,0	6	10,0
1600TR3814	G3/8"	G1/4"	7,0	9,0	8	6,0
1600TR1214	G1/2"	G1/4"	8,5	10,5	10	23,0
1600TR1238	G1/2"	G3/8"	8,5	10,5	10	10,0
1600TR3412	G3/4"	G1/2"	11,0	13,0	12	35,0
1600TR134	G1"	G3/4"	12,5	15,0	17	38,0

1110-3PCS

Nipple three pieces M/M BSPT thread in yellow brass



CODE	T	I	L	H1	H2	H3	GR.
1110TR18-3P	R1/8"	9,0	27,0	15	5	5	59,0
1110TR14-3P	R1/4"	12,0	33,5	19	6	6	65,0
1110TR38-3P	R3/8"	13,0	36,5	22	8	8	71,0
1110TR12-3P	R1/2"	16,0	44,0	27	12	12	86,0
1110TR34-3P	R3/4"	18,0	53,0	36	14	14	103,0
1110TR1-3P	R1"	22,0	64,0	46	19	19	124,0